

Caution(The patients safety is our first priority)

1. The handpiece should only be used by certified dentists.
2. Do not use twisted, worn, damaged, or non-ISO standard burs.
3. Do not disassemble or alter handpiece.
4. Do not drop or subject to excessive shock.
5. Make sure handpiece is operating normally before each treatment.
6. If any abnormalities, such as vibration, noise, or overheating are found, please stop using the equipment immediately and send it for repair.
7. Contact your original supplier for professional repairs

Air pressure

Adjust the air pressure to 2.3-2.8kg/cm² 38-40 PSI



Connecting / Disconnecting the handpiece

1. Connecting quick coupling to the handpiece.
2. Insert the handpiece into the coupling with the connector ring pushed backward.
Note: Make sure the handpiece is tightly connected with the quick coupling
3. Disconnecting handpiece from coupling.
Slide back the connector ring of the coupling and remove the handpiece.

Changing the Bur

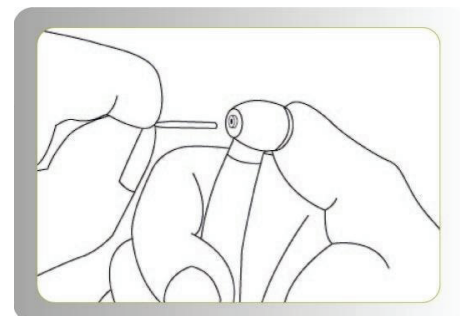
1. Inserting the bur

Press the push-button with thumb and insert the bur, then release the push-button.

Note: The bur must be inserted as far as it will go.

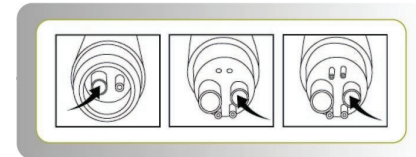
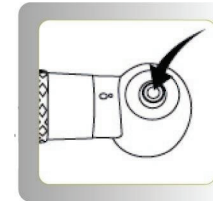
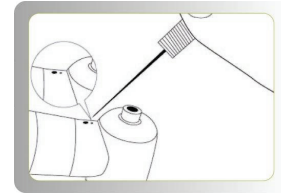
2. Removing the Bur

Make sure the bur stops completely first. And then press the push-button firmly with thumb, and remove the bur.



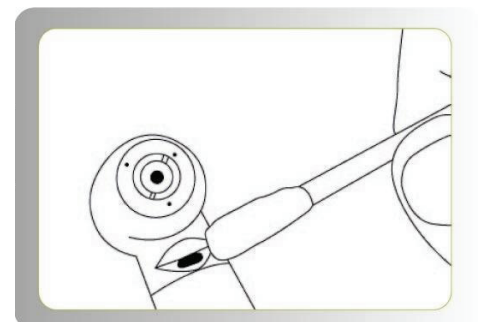
Maintenance

1. Take off the bur first, then brush off any tooth debris from the handpiece.
 2. Use the cleaning wire to clean the water spray hole and the air hole.
 3. Spray lubricant for 1-2 seconds into the spindle hole. (bur's gateway)
 4. Spray lubricant for 2-3 seconds into the drive air port at the rear of the handpiece.
 5. Connect the handpiece with the quick coupling. Be sure that the water is turned off.
 6. Surround the bur housing with white gauze. Keep the gauze clear of any actual contact with the rotating burr to avoid entanglement.
 7. Press the foot pedal for 20 seconds and check if there is any dirt on the gauze.
 8. Repeat this step until all dirt has exited the handpiece and the gauze appears clean.
 9. After treatment, please sterilize handpiece at 135 °C for 15 minutes.
- Note:** Do not immerse handpiece in disinfectant solution or water.



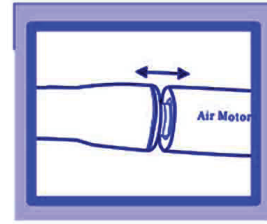
Cleaning of fiber optic

1. Clean the glass rod with cleaning fluid and a soft brush.
2. Dry the glass rod carefully with a cotton swab.
3. Avoid scratching the glass rod.

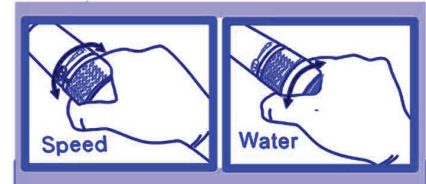


Slow Speed Motor

1. Connect the bottom of the straight or curved noise cone to the air motor insert.



2. To adjust the motor speed, use the changing ring to adjust the speed when operating. For internal water flow HP's you may also adjust the water flow using the lower adjusting ring.

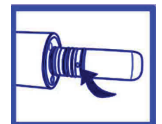


3. To insert a bur into the straight noise cone turn the locking ring counter clockwise to open the chuck. Once a bur is inserted, turn the locking ring clockwise to lock it in place.



Slow Speed Motor Maintenance

1. Use the cleaning wire to remove any debris from the air and water holes.
2. Spray lubricant for 1 to 2 seconds into the spindle hole. "Straight attachment"
3. Spray lubricant into the drive air port of the slow speed motor.
4. Inspect the handpiece o-rings for damage. Replace is necessary.

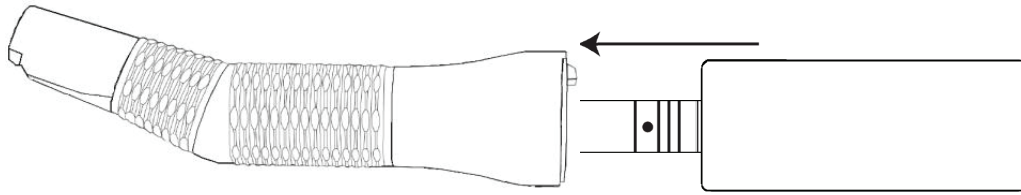


5. Press the foot pedal for 20 seconds to remove excess oil from the slow speed motor

Note: Do not immerse handpiece in disinfectant solution or water.

Connect / Disconnect geared Angle Handpiece with motor

Align the opening of the straight nose cone or contra angle to the motor. Once aligned, firmly press the two piece together. Make sure your connection is fastened. To remove pull the straight nose cone or contra angle up and it will detach.



Cleaning and care

Incorrect cleaning and care can result in a shortened life span of your handpiece. Please follow the cleaning steps listed below after every use.

External Cleaning

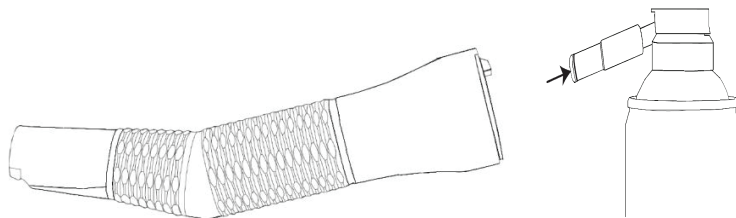
Clean the geared angle thoroughly with a brush under running water. Wipe dry with a clean cloth or wipe with alcohol and let dry. Clean the coolant spray orifice with the included wire. After using the cleaning wire you must disinfect it. Do not clean your handpieces in any type of ultrasonic device. Doing so will damage the handpiece.

Disinfection

Disinfect only by wiping with pure isopropyl alcohol. Never use chemical sterilization by e.g. chlorine, aldehyde or quaternary amines. Residues may harm the patient. Do not use disinfection baths. You will damage the handpiece.

Lubrication

Use Premium Handpiece Lubrication for cleaning and care. Screw the lubrication adaptor LT1013 on the oil can. Put the adaptor in the upper part of the handpiece. Press 1 - 2 seconds.



Sterilization

Autoclave the geared angle handpiece in an autoclave up to 135 °C (2bar) / 275 °F (29PSI). After sterilization of the instrument, pack it in a dust-free and dry container. Do not sterilize in the container. The handpiece can be sterilized at least 250 autoclave cycles.

