



# Why not scan more and work less?

UP3D Scanner Series



Specialized in dental desktop scanner



# WE ARE FULL DENTAL CAD/CAM SOLUTION DEVELOPER AND MANUFACTURER

---

UP3D is a high tech company headquartered in Shenzhen since 2013.

UP3D is one of the few companies in the world that are capable of developing a full dental CAD/CAM solution including software and hardware.

We are committed to provide our worldwide customers with high quality dental CAD/CAM products to benefit from the digital dental revolution.

**UP3D**-digital technology improves life

UP3D

UP400

UP400

High-speed  
model scanner

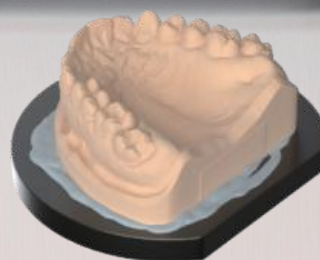
Accuracy

< 8 microns



Ultra high speed scanning

Only 12 seconds to scan full arch



Unsectioned model

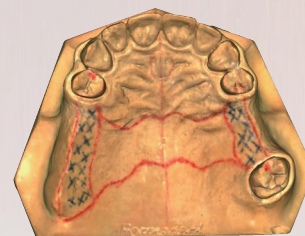
It can scan the narrow gap model, orthodontic and unsectioned models very well

True color texture

Restore texture color perfectly



Texture model



UP560 scanned data

Wide Applications

Veneer model, implant model, uncut model, and regular cut model, impressions

# UP560 ultra-high speed, true color texture, and RPDs' assistant

UP560 is newly upgraded which is based on UP360 series, with dual 3 megapixels cameras (high frame rate), realizing faster and clearer capture image, and provides more efficient and accurate data for the digital dental industry.

## Accuracy

<6 micron

## True color texture scan

true color texture, and RPDs' assistant

## Scanning speed improvement

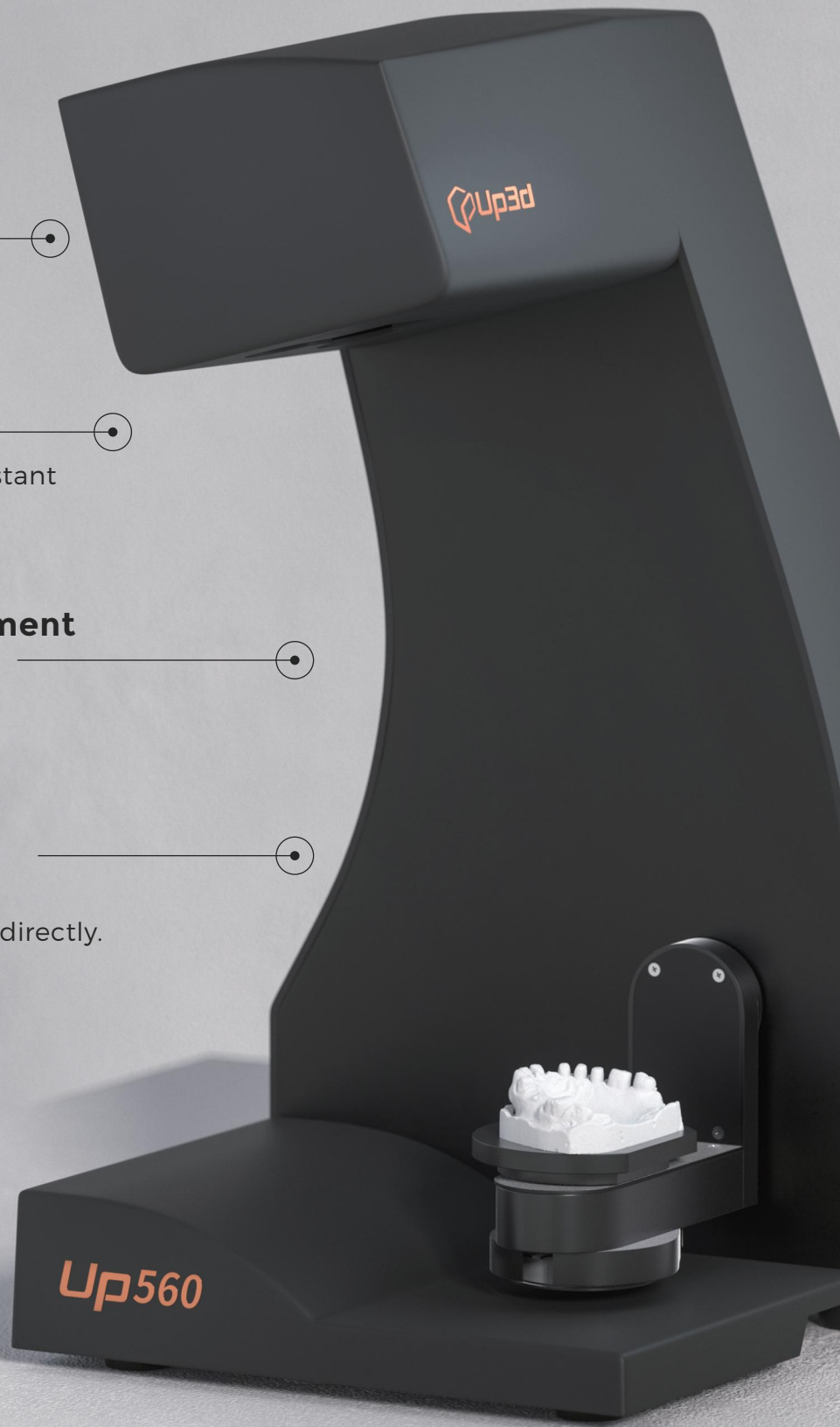
20% compared with UP360+

## Output formats upgrade

Compatible with PLY format,  
importing true color  
texture file to 3shape and exocad directly.

## Wide Applications

Veneer model, implant model,  
uncut model, and  
regular cut model, impressions







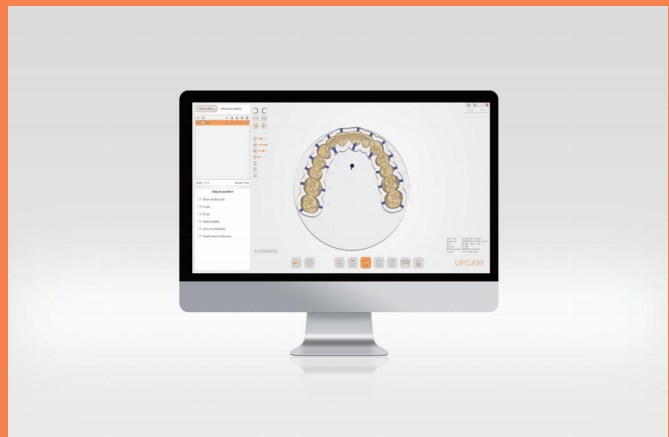
Model	UP400	UP560
Size:	355×268×384 (mm)	305*310*550 (mm)
Weight:	9.5kg	14kg
Cameras:	2x1.3mp	2x2.0mp
Accuracy:	<8 microns	<6 microns
Projector:	Blue light	Blue-light,
	Multi-color scanning	Multi-color scanning
Interface:	USB 3.0	USB 3.0
Output format:	STL; UM; PLY; OBJ	STL; UM; PLY; OBJ
Power supply:	AC110-240V, 50HZ	AC110-240V, 50HZ
Functions:	All-in-one scan	All-in-one scan
	One click scanning triple tray	One click scanning triple tray
	Detect margin line	Detect margin line
	True color texture scan	True color texture scan
	Impression scan	Impression scan
	Unsectioned models scan	Unsectioned models scan
Full arch	12s	15s
12-units die	24s	29s
All-in-one	16s	18s
Triple tray	70s	90s



# UPCAD

## Self-developed dental design software

UPCAD is an independently developed dental design software by UP3D since 2011, specially customized for dental technicians, and easy to learn and use. Enables users to upload database.

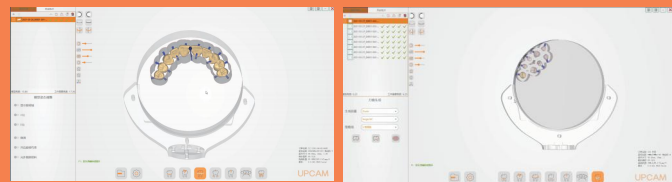


# UPCAM

## UPCAM software

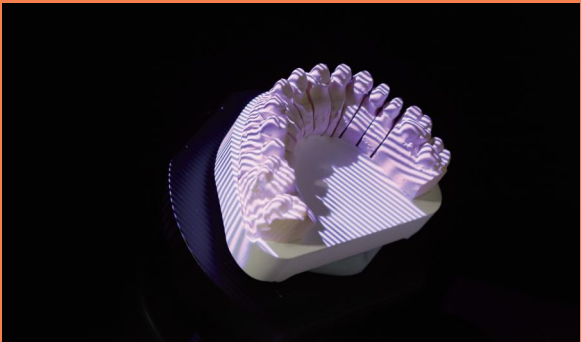
UPCAM is a dental CAM software which is developed by UP3D and ModuleWorks from Germany. (ModuleWorks is one of the most advanced CAM core algorithm supplier in the world).

Suitable for all UP3D mills. UPCAM supports all types of dental restoration processing.



# Application- Bridge case

## UP400 Scan



## UPCAD Design



## UPCAM Nesting



## P53 Milling





Digital technology improves life



[www.up3ds.com](http://www.up3ds.com) [info@up3d.cn](mailto:info@up3d.cn)

(Brian) 702-274-1948 [brianup3d@gmail.com](mailto:brianup3d@gmail.com)