

TPC



Laguna 2.0

Electromechanical Patient Chair



Installation, Operation & User Manual

TPC

851 S. Lawson St.

City Of Industry, CA 91748

P626-810-4337 Fax 626-810-4245



Table on Contents:



Page

GENERAL INFORMATION	3
Installation and coordination	5
Installing dental chair upholstery	7
Overview of controls	11
Calibrating Chair Motors	13
CLEANING & DISINFECTING GUIDE	14
Warranty	15
TROUBLE SHOOTING GUIDE	16

Model: LAGUNA^{2.0} 2000
Serial No: L2000-T211030
Rated Voltage: 120V-60Hz~
Rated Current: 6A
Classification:
Mode of Operation: 1min
Cool down period: 9min
Manufactured: 2-2021
TPC

The dental chair is marked with a product identification label including manufacture, serial number and date of manufacture. This label is located on the back of the dental chair.



The dental chair is marked with a Risk Class symbol. This label is located on the front of the dental chair base next to the main power switch.



The dental chair is marked with a main electrical grounding point symbol. This label is located on the front left side of the dental chair steel base frame, under the plastic cover.

TPC



The dental chair is marked with a main electrical grounding point symbol. This label is located on the front left side of the dental chair steel base frame, under the plastic cover.



The fuse is a 15-amp Fuse, 5x20mm

The dental chair is marked with a fuse label symbol. This label is located under the pump cover on the front left side of the chair frame.

Transportation / Storage Information

- Do not store the dental chair in temperatures exceeding 130 degrees.
- Do not store the dental chair on its side. Always store upright on pallet.
- Do not stack more than 5 packaged chairs at a time on top of each other.
- Use approved pallet jack or forklift to move the dental chair.
- Do not attempt to move stacked dental chairs.
- Only store the dental chair in dry cool place.

Laguna 2.0 Installation Instructions

1. Remove the plastic covers from the base of the dental chair.
Slide the back cover straight back to remove from the chair base.



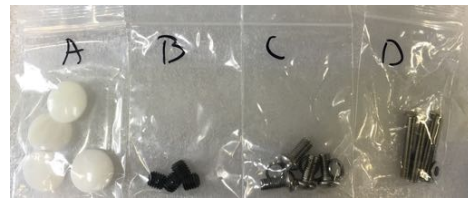
2. Remove the 4 shipping bolts that secure the chair to the pallet.



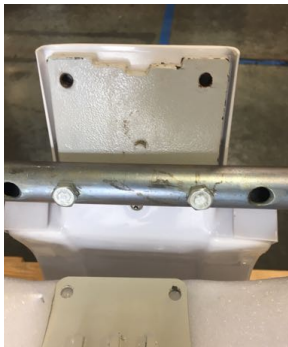
3. Remove the lift handles from the pallet. Install on the threaded hub on each side of the chair. These are going to be used as a lift point. **Do-not use the chair armrest as lift points.**



4. After the chair is placed in the installation location, Install the leveling lugs included in (bag B) in the holes that were used to secure the chair to the pallet. These will be used to level the chair base in the event the floor is not level.



5. Remove the lift handles from the backrest mount by removing the two 14mm bolts.



6. Secure the backrest to mounting hub using the (4) 5mm Allen screws and included lock washers. (Bag C)



Installing Dental Chair Upholstery

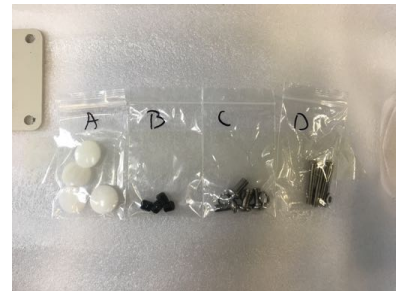
1. Place the backrest cushion against the backrest mounting bracket. Align the 4 mounting tabs with the slots in the back of the upholstery.



2. Once all 4 tabs are aligned with the backrest cushion slots, Slide the backrest down to secure in place. Verify all 4 corners are secured.



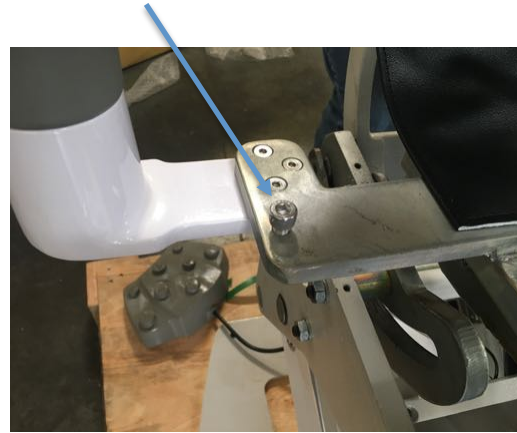
3. Place the backrest cover over the backrest bracket. Secure in place using the 4 Allen screws and washers in Bag (D). TIP: You can use an Allen wrench to align the lower holes, so the Allen goes in straight. Once all 4 Allen screws are installed, tighten them to secure the cover in place.



4. Install the 4 rubber caps in bag (A) to cover the Allen screws on the backrest cover.



5. Place the seat cushion on the seat frame. Align the two Allen bolts with the cutout notches in the upholstery. You may adjust the position of the Allen screw if the upholstery is loose.



6. Align the seat cushion mounting holes with the seat frame. Secure the seat cushion to the seat frame using the 2 (5MM) Bag (E) Allen screws and washers.



7. Place the plastic cover over the headrest cushion.



8. Attach the headrest cushion to the headrest stem using 3 (2.5MM) Allen screws. Bag (E)



Overview of foot control operations

1. Seat Height Adjustments

- To raise, press down on upper area of the foot control.
- To lower, press down on the lower area of the foot control.

2. Backrest Adjustments

- To raise, press down on right side of the foot control.
- To recline, press down on left side of foot control.

3. Preset Operation

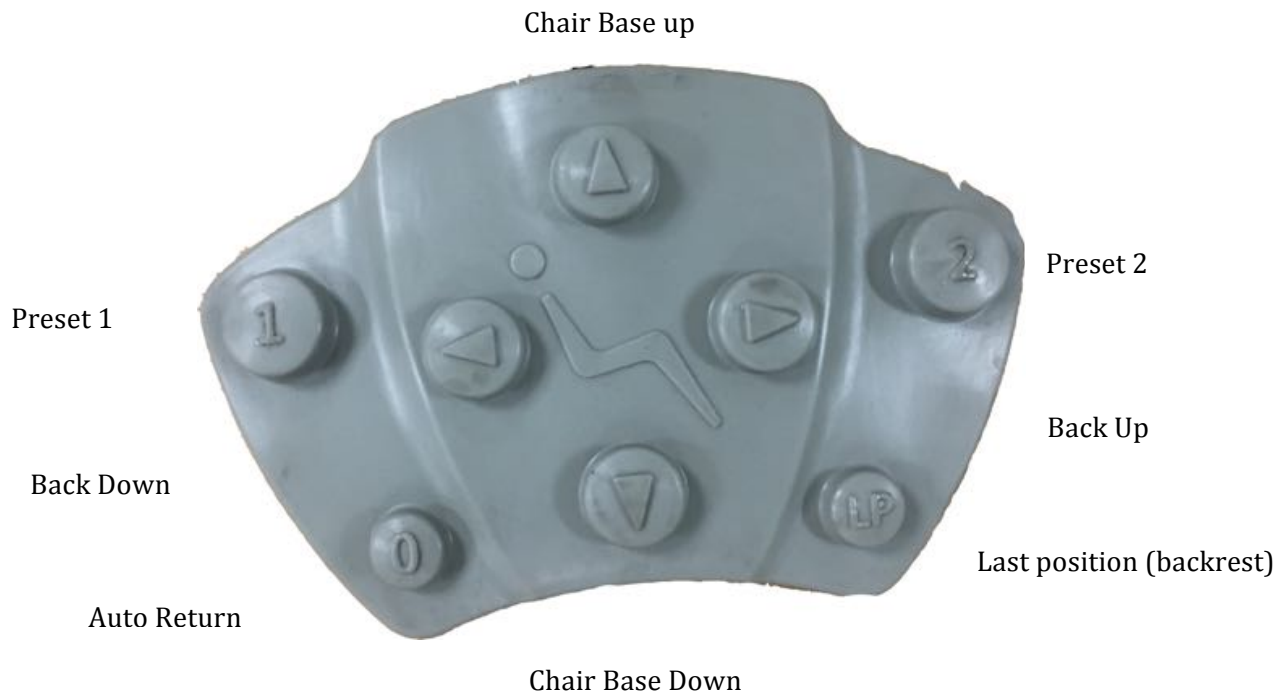
- Manually move the chair to the desired position. Press and hold the pre-set switch (#1, or #2) on the foot control to program. After 5 seconds you will hear a confirmation beep.

4. Automatic Return

Momentarily press 0 switch on foot control to activate chair to return to normal position.

5. LP Last position

By pressing the (LP) last position button the chair backrest will travel to the last position.



Safety Plate

A safety plate is provided in the cantilever cover to stop motion of chair when object is accidentally caught underneath.



7. Armrest Rotation

Either armrest can be rotated outward by grasping the end portion of armrest, pulling upward and turning.



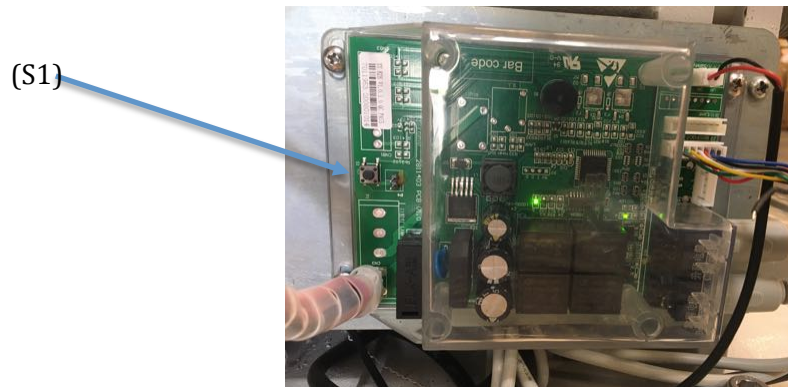
8. Headrest Adjustments

Height of headrest can be adjusted simply by pulling headrest up or down due to friction mount incorporated in backrest. Angle of articulating headrest can be changed by releasing slide bar on headrest stem



Calibrating Chair Motors

1. To recalibrate the chair motors, travel back to factory default. Perform the following procedure.
 - Remove the pump cover from the base of the chair to gain access to the main PCB board.
 - Locate the switch labeled (S1).
 - Press and hold the switch for 12 seconds. The chair will automatically recalibrate the motors. Once complete, the chair base and backrest will be lowered completely. Press (S1) again to exit recalibration mode, Lift base and backrest to verify you have full travel from each of the motors.



Main Power Switch and fuse location

When the main power switch is illuminated the power is "ON". If the switch is not illuminating and is in the UP position / On, Check the two 15 Amp fuses to the right of the switch. Disconnect the main power cord when checking the fuses. These fuses are 15Amp 250v 5X20mm glass fuses.





Laguna 2.0 Patient Chair – Care and Maintenance

No maintenance is required except normal care and cleaning.
Clean vinyl upholstery and plastic components with mild soap and water.

Barrier covers should be used on chairs for asepsis.
Surface disinfecting chemical will eventually cause some discoloring of upholstery.

Suggested Disinfectant Application

Clean dirt and stains with mild soap and water.
Moisten an applicator with disinfectant; mildly wipe the material with the disinfectant.
Do not allow the disinfectant to soak in or dry on the surface; wipe off with soap and water.

PLEASE KEEP LIQUIDS AWAY FROM ELECTRICAL CONNECTIONS!

Most electrical control switches ARE NOT hermetically sealed.
When a switch gets wet, it can self-activate, or perhaps short out and damage other system components. Keep switches dry. Avoid costly equipment damage or failure. Avoid downtime by following these guidelines:
Please DO NOT spray disinfectants directly AT OR INTO electrical switches and controls.
Simply spray these solutions onto a cloth and wipe down the control surfaces. Be careful not to saturate the cloth.

- Any action not recommended by the manufacture may cause risk of injury or shock!
FOR ADDITIONAL INFORMATION CONTACT YOUR TPC DEALER



TPC 5 YEAR LIMITED WARRANTY

Warranty Information

All of our products sold are guaranteed to be free from defects in workmanship and materials for a 1 year from date of purchase, unless otherwise stated. TPC will repair or replace any defective part at no charge. TPC will not be responsible for labor charges or shipping charges to / from the TPC facility. This guarantee does not cover normal wear or stains on surface finish. The guarantee does not cover damage resulting from improper installation, misuse or accidents incurred in shipping and handling. All claims against the freight carrier must be initiated at the time the damaged items are received. The claim is the responsibility of the customer. We are improving our products on a continuous basis. We reserve the right to make modifications without the need for prior notification and are not obliged to modify previously manufactured items. Main drive motors parts are covered under the 5 year warranty. Main chair PCB, transformer are also covered under a 5 year warranty. Major cast components are covered under the TPC limited 5 year warranty. Upholstery, arm rests and any plastic components are covered under a 1 year warranty. Only authorized service technicians should attempt to service TPC equipment. Service performed by any unauthorized technicians may result in a voided warranty.

Laguna 2.0 Chair Limitations

- Don't exceed the maximum weight capacity of 400 lbs or damage may occur.
- Don't let more than one patient sit in the chair at one time.
- Don't stand on the dental chair.
- Don't operate the dental chair around any flammable liquids.
- Don't exceed the maximum mode of operation time "3 min".
- Keep liquids away from electrical components.



Laguna 2.0 Chair Troubleshooting

Problem	Cause	Solution
Dental Chair does not move up or down. Chair makes no sound.	No power Blown fuse Power switch off Blown transformer	Check power source Check fuse Check power switch Check transformer voltage 24-vac
Dental Chair will not move, but makes a beep sound when controls are pressed	Safety switch plate engaged	Check safety plate for obstructions
Chair makes noise when motor is running. Squealing	Damage to drive extension	Check drive extension for damage. Replace motor if needed.
Dental Chair does not go low or high enough	Motor travel has been adjusted.	Recalibrate the chair motors. Refer to page 13 of manual.
Unable to program preset position 1, 2 and 3	Move the chair to the desired position. Press and hold the preset 1 or 2. If a secondary beep is not heard after 10 seconds, The PCB board maybe damaged.	Damaged to Main PCB if preset memory will not program.
My chair is on but there is no control out of the touch pad	Touch pad is not connected Touch pad is burnt out	Connect touch pad Replace touch pad
My head rest does not stay in the position that I put it in	Set screws in backrest are loose.	Tighten set screws
Chair arm rest moves very Easley.	Screw is loose that holds assembly together	Tighten screw