

A BETTER WAY  
FOR PATIENT CARE





# WHAT IS GUIDED BIOFILM THERAPY?

Dental biofilm is the main etiological factor for caries, periodontitis and peri-implant infections. Periodontitis may increase the risk of systemic diseases, such as cardiovascular and respiratory disorders, arthritis, or diabetes. Regular oral hygiene, combined with professional treatment, keeps biofilm under control – for a better oral and systemic health. However, dental professionals know that traditional methods of mechanically removing biofilm can be uncomfortable for patients, thus leading to lower compliance levels.

## GUIDED BIOFILM THERAPY (GBT) IS THE NEW, BETTER APPROACH

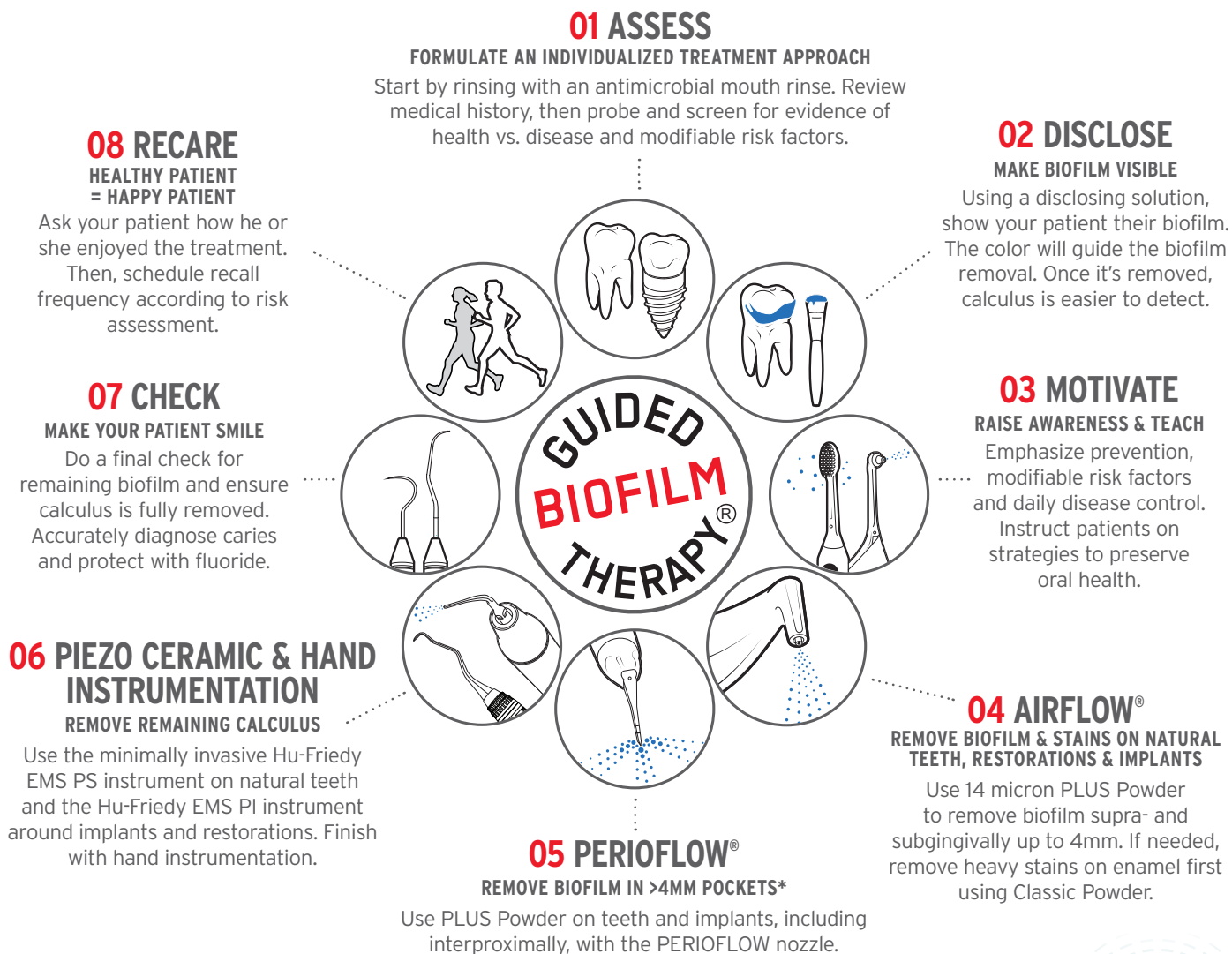
Guided Biofilm Therapy is the systematic, predictable solution for dental biofilm management in professional prophylaxis using state of the art AIRFLOW®, PERIOFLOW®, and PIEZON® technologies.

Guided Biofilm Therapy is proven by scientific evidence and consists of treatment protocols based on individual patient diagnosis and risk assessment. The treatment is given in the least invasive way, with the highest level of comfort, safety, and efficiency.



# THE EIGHT-STEP PROTOCOL

Make appointments more efficient and comprehensive with the simple steps of the Guided Biofilm Therapy protocol. Patients feel more engaged during their treatment because of the individualized care while clinicians are able to work smarter.



# SEE THE DIFFERENCE

## IMPLANTS

Finally, a gentle, effective treatment for cleaning implants and treating peri-implantitis in a minimally invasive way.

On this patient, the disclosing agent is applied first and seeing the color helps to minimize treatment time. Then, AIRFLOW removes supra- and subgingival biofilm up to 4mm, while the PERIOFLOW nozzle removes biofilm directly in the peri-implant pockets up to 5mm\*. Lastly, the PIEZON PI implant tip removes any remaining calculus around the implant.

Biofilm and calculus were carefully removed without damaging the implant, helping this patient on their path to restored oral health.



**AFTER DISCLOSING**



**AIRFLOW**



**PERIOFLOW®**



**PIEZON**

## GINGIVITIS

Biofilm accumulates at the gingival margin, causing inflammation and eventually gingivitis. On this patient, disclosing agent shows early and mature biofilm. The sulcus area has mature biofilm, due to improper brushing technique. In this case, GBT was limited to AIRFLOW PLUS Powder up to 3mm. Some bleeding from the gingival margin indicates low-grade gingivitis.



**BEFORE  
DISCLOSING**



**AFTER  
DISCLOSING**



**AFTER GBT**

## CARIES DETECTION

Accurate caries detection requires clean teeth. Here, the disclosing agent shows the presence of biofilm, interdentally as well as in the gingival margin. Finally GBT reveals interdental caries at an advanced stage.



**BEFORE  
DISCLOSING**



**AFTER  
DISCLOSING**



**AFTER GBT**

## CHILDREN

In this case, using a disclosing agent visibly reveals cariogenic biofilm and helps motivate the young patient. GBT was limited to AIRFLOW PLUS Powder giving maximum comfort and improving patient compliance.



**BEFORE  
DISCLOSING**



**AFTER  
DISCLOSING**



**AFTER GBT**

## ORTHODONTICS

Brackets, bands and wires hinder your access when removing biofilm. Here, disclosing agent reveals how much cariogenic biofilm (pH < 4.5) has accumulated in areas difficult to access during home care. Using AIRFLOW with PLUS Powder during GBT helped easily disrupt biofilm through and around these ortho appliances, and revealed demineralized spots that were hard to identify before.



**BEFORE  
DISCLOSING**



**AFTER  
DISCLOSING**



**AFTER GBT**

## EXPOSED DENTINE

Biofilm and calculus removal on exposed dentine surfaces is usually critical in terms of patient comfort and risk of over instrumentation. The disclosed biofilm helps to minimize AIRFLOW treatment and to save time. No more color (of the disclosing agent) - no more biofilm. AIRFLOW PLUS powder and PIEZON with the PS instrument are the best assurance for high quality, comfortable treatments.



**BEFORE  
DISCLOSING**



**AFTER  
DISCLOSING**



**AFTER GBT**

## STAINS AND CALCULUS

AIRFLOW removes stains and soft deposits, minimizing power instrumentation.



**BEFORE GBT**



**AFTER GBT**



# IMPLEMENT GBT

AIRFLOW Prophylaxis Master and AIRFLOW One offer the most advanced AIRFLOW, PERIOFLOW, and PIEZON (AFPM only) technologies for delivering the key components of Guided Biofilm Therapy for the highest level of patient care.

## FEATURES & BENEFITS

- Heating system with **adjustable water temperature** for warm, comfortable treatments that patients (even cold-sensitive) will accept and enjoy
- **Interactive touch panel** easily regulates and adjusts the AIRFLOW and PIEZON power levels, providing the most customized patient experience
- State-of-the-art pressurization tower can pressurize and depressurize in seconds using an integrated magnetic connection. **Powder chambers are easier than ever to switch out** for different treatments with no need to purge the device.
- **Large powder chambers increase efficiency during treatment** with limited need to stop and add more powder
- **Wireless foot pedal** with 360° power activation access offers the clinician a more convenient and ergonomic experience, while easily starting and stopping treatment
- Completely integrated AIRFLOW waterline purge system **cleans fluid lines in under a minute** for ongoing efficiency



## AIRFLOW PROPHYLAXIS MASTER FT-229HF

The AIRFLOW Prophylaxis Master is the most advanced device for delivering Guided Biofilm Therapy to patients. Created for intensive professional use, the device features unique ergonomics, high precision, easy maintenance, and compliance. The AIRFLOW Prophylaxis Master has been designed with the highest standards of performance, safety, and comfort in mind, specifically built to cater to core treatments of GBT - AIRFLOW, PERIOFLOW and PIEZON.



## AIRFLOW ONE FT-230HF

The AIRFLOW One shares the same meticulously designed features of the AIRFLOW Prophylaxis Master, with two of the three functions of GBT - AIRFLOW and PERIOFLOW for superior supragingival & subgingival biofilm management.



## AIRFLOW STATION+ FEATURING WATER DELIVERY DW-048A

The new AIRFLOW cart converts the AIRFLOW Prophylaxis Master and AIRFLOW One into an ultra-compact prophylaxis station - no water connection needed. The AIRFLOW STATION+ comes with an autonomous and independent water supply system with 360° movement for greater maneuverability, ideal for easy storage and tight spaces.



## AIRFLOW STATION DW-048B

The AIRFLOW STATION transforms the AIRFLOW Prophylaxis Master and AIRFLOW One into a completely mobile 360° station. Thanks to its fully-rotating wheels and minimalist design, you will benefit from greater maneuverability in the tightest of spaces.



## AIRFLOW PLUS POWDER DV-117/A

AIRFLOW PLUS powder is the first powder that is safe to use for supra- and subgingival biofilm removal but strong enough to efficiently remove light to moderate stain. The finest grain powder in dentistry, PLUS powder's erythritol-based, minimally abrasive spray can be used on virtually every patient.

- Erythritol
- 14 µm
- 120g per bottle



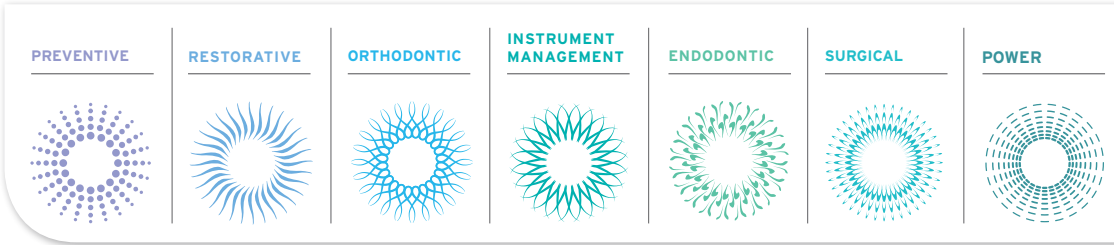
## INSTRUMENT PS DS-016HF/HF

The PIEZON PS (Perio Slim) Instrument is slim and smooth like a probe. It is minimally invasive, and preserves the epithelium due to its linear movements.

# PART CODES

PRODUCT	PART CODES
AIRFLOW Prophylaxis Master	FT-229HF
AIRFLOW One	FT-230HF
AIRFLOW Station+ Featuring Water Delivery	DW-048A
AIRFLOW Station	DW-048B
AIRFLOW PLUS Powder	DV-117/A
Instrument PS	DS-016HF/HF

For more information, visit  
**[Hu-Friedy.com/GBT](https://www.hu-friedy.com/GBT)**



Hu-Friedy Mfg. Co., LLC: 3232 N. Rockwell St. | Chicago, IL 60618 | USA  
Telephone: 1-800-Hu-Friedy or 1-773-975-6100 | Website: Hu-Friedy.com

©2020 Hu-Friedy Mfg. Co., LLC. All rights reserved. AIRFLOW® is a registered trademark of Ferton Holding S.A. CORPORATION  
SWITZERLAND. [956] HFL162/0120

