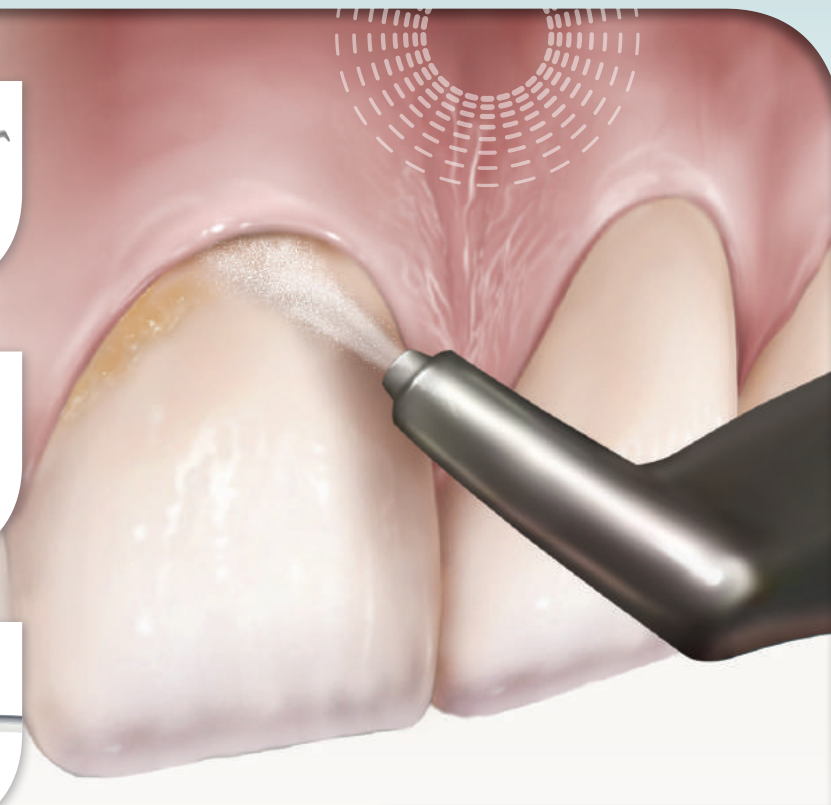


POWER



AIR-FLOW® THERAPY

COMPLETE BIOFILM MANAGEMENT SOLUTIONS

FOCUS ON BIOFILM

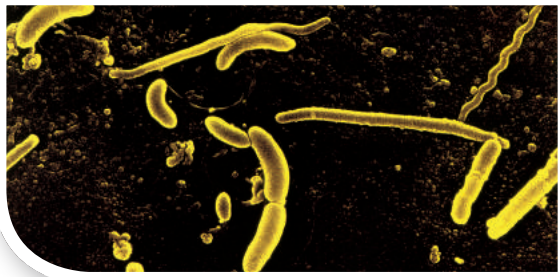


Implant is loose due to withdrawal of bone tissue.

DEEP DOWN, hidden between the root surface and gingiva, up to 1,500 different strains of bacteria continue to destroy soft tissue and bone under the cover of biofilm.

WHY IS BIOFILM SUCH A CONCERN?

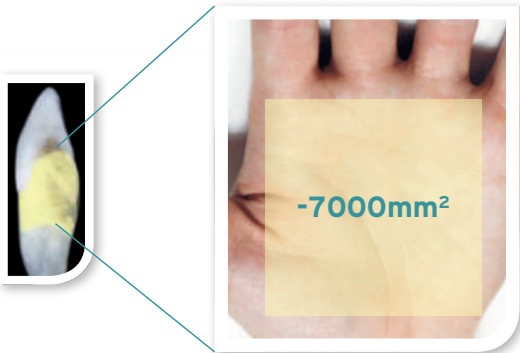
- Micro-organisms colonize the area and develop a protective layer. Bacteria then separate and colonize other areas.
- Bacteria underneath biofilm are resistant to drug therapy.
- Immune defenses of the body are powerless – in order to prevent a bacterial invasion, the body triggers a process which breaks down bone tissue.



ORAL SYSTEMIC LINK – in action

Periodontitis and peri-implantitis can lead to increased health risk factors throughout the body:

- Diabetes **2-11X**
 - Atherosclerosis **2X**
 - Osteoporosis **2-4X**
(according to Hetz/Hendriks 2004)
- Stroke **2X**
 - Premature birth **4-8X**
(higher than when healthy)
 - Chronic disease of the bronchial passages **2-4X**



Wound surface of moderate periodontitis in the entire oral cavity is the size of the palm of a hand.





Your Solution: AIR-FLOW THERAPY – THE BETTER WAY

AIR-FLOW Therapy is not simply an air polisher – it is an advanced biofilm management system that is uniquely equipped to reach and remove biofilm on even the most difficult and delicate surfaces where rubber cups have limited access or hand and power scaling would take too long – crowded teeth, subgingivally, on implants, around ortho brackets – the list goes on.

Using a mixture of air, water and low abrasive powders, AIR-FLOW Therapy is gentle, safe and comfortable for patients, and simple, efficient and effective for clinicians.

THE ADVANTAGES OF AIR-FLOW THERAPY

AIR-FLOW Therapy can support your practice’s business needs and goals while also supporting patient health – a win-win for you as a clinician.

SUPERIOR PATIENT CARE 	AIR-FLOW Therapy offers complete biofilm removal and can be used on every patient. Since it is safe to use on surfaces where biofilm accumulation can be dangerous, primarily subgingivally and on implants, AIR-FLOW Therapy aids in the reduction of inflammation and the prevention of related diseases ranging from gingivitis to periodontitis/peri-implantitis.
INCREASED EFFICIENCY 	AIR-FLOW Therapy saves an average of 8-12 minutes per patient. When using AIR-FLOW prior to scaling, clinicians will save time not only on biofilm removal, but also on calculus removal since scaling can focus on hard deposit detection and removal alone.
PATIENT RETENTION 	Clinicians receive positive feedback from their patients who have experienced AIR-FLOW Therapy. Incorporating this advanced, fast and comfortable technology into practice will encourage even patients with the most complex perio-maintenance regimen to return regularly.
GENERATING REVENUE 	With the 8-12 minutes per patient saved, the clinician is now able to do something extra during every appointment that they may not have had time for previously. There is now opportunity to explain and sell billable services such as whitening, clear aligners, sealants, etc., or even update charting to ensure patient treatment plans are as up-to-date as possible.

Biofilm Accumulation

Inflammation

Oral Diseases

Tooth/
Implant Loss

- Periodontitis is the most common form of tooth loss.
- Periodontitis affects the entire immune system – often with dramatic effects on the entire body.
- Peri-implantitis is the periodontitis of implant patients. Biofilm adheres to the titanium implant, causing peri-implant infections, withdrawal of supporting bone and loss of implant.

AIR-FLOW THERAPY

INCORPORATING AIR-FLOW THERAPY

Most clinicians are used to polishing with rubber cups or supragingival air polishers at the end of treatment. Hu-Friedy recommends using AIR-FLOW first to receive the most benefits. Clinicians find that removing biofilm first saves 8-12 minutes per patient. Once the coating of biofilm is removed from the entire mouth, less instrumentation time is spent “scaling” soft deposits. Calculus is easier to see, detect, and remove – resulting in all around time savings throughout the procedure.

USE
AIR-FLOW
FIRST

“I save an average of 10 minutes per patient using AIR-FLOW with low-abrasive powders first in the appointment which I now use for improved services, education and treatment enrollment. Win/win/win for the patient, for me and for the practice.”

KAREN DAVIS, RDH, BSDH

BREAKING DOWN THE TECHNOLOGY

Supragingival + Shallow Subgingival



STANDARD AIR-FLOW NOZZLE

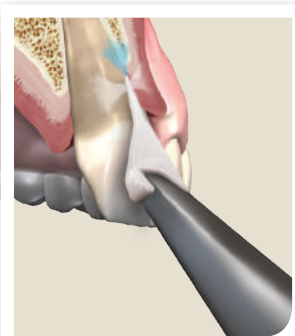
With Classic powders (sodium bicarbonate)

- Supragingival air polishing and stain removal

With Plus powder (erythritol) or Perio powder (glycine)

- Delicate supragingival surfaces (ortho, restorations)
- Shallow subgingival biofilm removal (up to 4mm)

Site-Specific Subgingival



PERIO-FLOW NOZZLE

With Plus powder (erythritol) or Perio powder (glycine)

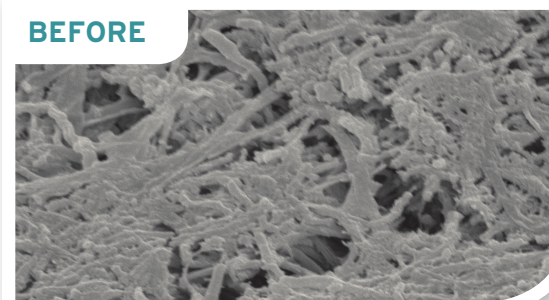
- Thin, tapered plastic nozzle attachment allows the powder/air/water mixture to be disseminated into a pocket*
- Adaptable around implant and restoration structures that are often difficult to reach and clean

AIR-FLOW THERAPY is a proven solution for biofilm removal.

A CLOSER LOOK AT BIOFILM REMOVAL

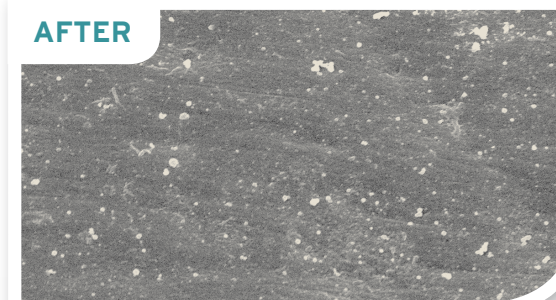
Photos by Prof. Dr. A. Mombelli, University of Geneva, Switzerland

BEFORE



The white surfaces are parts of the biofilm located in a thick layer on the root surface.

AFTER

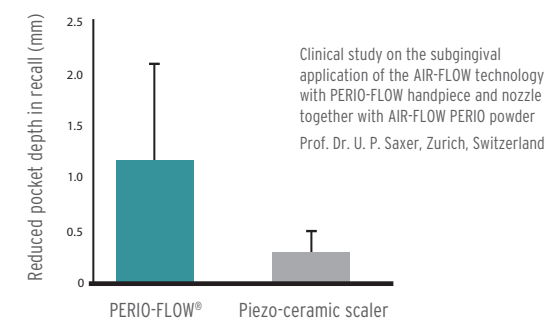


Following treatment with AIR-FLOW, the biofilm is removed and the root surface is clean and smooth down to the base of the periodontal pocket.

REDUCING POCKET DEPTH

Response to treatment of 200 periodontal pockets in patient recalls 3-6 months post-treatment

Reduction of pocket depth: by 1.22 mm after 4-6 weeks



AIR-FLOW THERAPY EXPERIENCE

Study 1

On a scale of one (very pleasant) to ten (unbearable), the AIR-FLOW PERIO method was rated 2.18.

Clinical study on the subgingival application of the AIR-FLOW technology with PERIO-FLOW handpiece and nozzle together with AIR-FLOW PERIO powder, Prof. Dr. U. P. Saxer, Zurich, Switzerland

Study 2

AIR-FLOW Therapy has been perceived as more acceptable and more time efficient than scaling and root planning (SRP).

Moëne R., Décaillat F., Andersen E., Mombelli A., School of Dental Medicine, University of Geneva, Switzerland - Journal of Dental Research 2009

HOW YOU CAN GET THE MOST OUT OF AIR-FLOW THERAPY

AIR-FLOW Therapy is so much more than a polishing device. Its versatility makes it the perfect enhancement to procedures that hygienists, dentists and specialists do every day.

SUPRAGINGIVAL PLAQUE/BIOFILM REMOVAL

Cleans soft deposits from tooth surfaces

- The versatility of AIR-FLOW ensures that plaque/supragingival biofilm is quickly and efficiently removed from supragingival surfaces.
- Once all of the plaque is gone, it is easier to detect calculus, and rubber cup/paste is not needed.

SUBGINGIVAL BIOFILM REMOVAL

Prevents accumulation of biofilm and onset of related diseases

- Removing shallow subgingival biofilm in healthier patients at the gingival margin
- Removing biofilm in periodontal maintenance patients with deeper pockets*
- Can help reduce pocket depth and aid in periodontitis prevention

FOR IMPLANT MAINTENANCE

Helps prevent implant loss

- Cleaning implants regularly is a necessary step in the prevention of mucositis and peri-implantitis and therefore in preserving the implant.
- AIR-FLOW Therapy gently removes the biofilm on all of the implant components without causing damage.

FOR RESTORATIVE MAINTENANCE

Keeps restorations clean and in tact

- Biofilm can accumulate on and around restorations.
- Studies show that sodium bicarbonate could cause damage to the restorations, while AIR-FLOW Therapy with glycine or erythritol preserves it while achieving optimal cleaning efficiency.

Photo: Karen Davis, RDH BSDH



Photo: Jodi Deming, RDH



FIGHTS STAINING AND MICROBIAL TOOTH DEPOSITS

Prevents gingivitis, periodontitis and caries

- Bacteria and micro-organisms in plaque are responsible for the spread of gingivitis, periodontitis and caries. This is countered by the removal of microbial tooth deposits and the effect of fluoride action.

WHEN PLACING PIT AND FISSURE SEALANTS

Minimizes the risk of caries

- Cleaning the fissures before sealing improves the adherence of the sealing material and reduces the risk of caries.

IN CONSERVATIVE DENTISTRY

Extends the life and optimizes the quality of synthetic restorations

- Cleaning the surface to prepare for enamel etching improves the adherence of composite, ceramic inlays and veneers.

IN PROSTHETICS

Facilitates color determination

- Cleaning healthy teeth for color adjustment of bridges, crowns, inlays and onlays, etc.

IN ORTHODONTICS

Reduces treatment risks

- Preparing the surface prior to bonding, cleaning of cemented bands, removing adhesive residue and bonded brackets
- Removing plaque/biofilm around brackets and other fixed appliances without removing wires

IN ESTHETIC DENTISTRY

Optimizes bleaching performance

- Cleaning the teeth before bleaching helps determine the exact natural color of the teeth
- Preparing the tooth surface guarantees the optimum efficacy of the bleaching agent

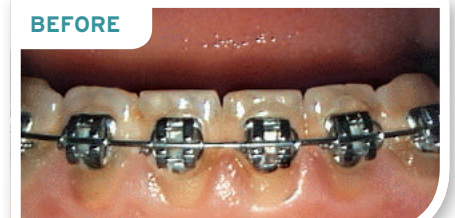
BEFORE



AFTER



BEFORE



AFTER

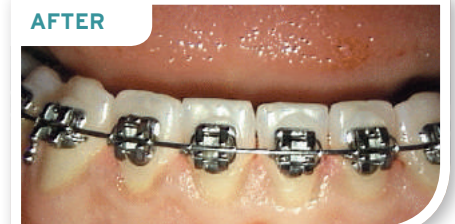


Photo: Dr. R. Kalla

AIR-FLOW UNITS

AIR-FLOW MASTER® | FT-188#HF/A/001

With two working modes and two powder chambers designed to suit every clinical situation, the AIR-FLOW Master can be used for subgingival as well as supragingival prophylaxis. When operated in the AIR-FLOW mode, the AIR-FLOW Master delivers gentle kinetic energy without scratching the tooth surface in order to remove supragingival biofilm and stains. Perio mode with glycine powder is often effective supra and subgingival biofilm removal and is safe on root surfaces and gingival tissues.

Features:

- Automatic illumination of activated powder chamber for identification
- Easy handling, cleaning and refilling of the powder chambers
- Smooth touch panel surface for simple cleaning and disinfection
- Sleek user interface offers easy adjustment of power and water delivery
- Ergonomic handpiece for working comfort and precision for the clinician

USE WITH: AIR-FLOW Classic, Perio and Plus powders



AIR-FLOW MASTER PIEZON® | FT-200#HF/A/001

The AIR-FLOW and Piezon Technologies combine to deliver complete and effective prophylaxis treatment to your patients. The AIR-FLOW Master Piezon enables the practitioner to readily switch between standard and perio working modes.

The AIR-FLOW Master Piezon can operate supra and subgingivally with both AIR-FLOW and PERIO-FLOW® handpieces and powder chambers included with the unit.

USE WITH: AIR-FLOW Classic powder (with AIR-FLOW handpiece and chamber) or AIR-FLOW Perio and Plus powders (with either handpiece and Perio/Plus chamber)

AIR-FLOW S1 | FT-177#HF/A/001



AIR-FLOW handy 3.0 Units

- Lightweight device allows for optimal clinician comfort
- Sleek design to ensure easy vision of the treatment area
- Well-balanced for easy handling
- Connects to dental unit's high-speed handpiece tubing



AIR-FLOW handy 3.0 FT-220#HF/A/001 (MIDWEST*) FT-220#HF/A/002 (KAVO)

Supragingival (with Classic powders) and shallow subgingival areas (with PLUS or PERIO powder)

AIR-FLOW handy 3.0 PREMIUM FT-225#HF/A/001 (MIDWEST*) FT-225#HF/A/002 (KAVO)

Two-in-one functionality! Two handpiece attachments (PLUS and PERIO) allow for both supragingival and subgingival use (with PLUS or PERIO powder)

AIR-FLOW handy 3.0 PERIO FT-221#HF/A/001 (MIDWEST*) FT-221#HF/A/002 (KAVO)

Site-specific subgingival areas (with PLUS or PERIO powder)

Features:

- Removes dental plaque, soft deposits and surface stains from pits, grooves, interproximal spaces and smooth surfaces of the teeth
- Free-flow technology to prevent clogging of powder, air and water line
- 3 integrated self-cleaning filters for proper maintenance of the unit
- Incredibly light handpiece tubing allows for easier maneuvering of the handpiece while in use

USE WITH: AIR-FLOW Classic powder

AIR-FLOW S2 | FT-178#HF/A/001

All of the features of the AIR-FLOW S1 plus Piezon technology for ultrasonic scaling!

USE WITH: AIR-FLOW Classic powder



*Fits standard 4-hole connection. W&H, NSK, Sirona and Bien Air connections also available.

AIR-FLOW ACCESSORIES & POWDERS

AIR-FLOW HANDPIECE | EL-308#HF/A

Based on free-flow technology, the AIR-FLOW handpiece features a 120° angle and is intended for supragingival use. The AIR-FLOW handpiece can also be used on the subgingival border area.



PERIO-FLOW HANDPIECE | EL-354#HF/A

Especially developed for subgingival applications, the PERIO-FLOW handpiece together with the PERIO-FLOW nozzle can be used in periodontal pockets up to 5 mm*. The PERIO-FLOW handpiece was innovatively designed to deliver the ultrafine AIR-FLOW PERIO and PLUS powders.

Both handpieces are sterilizable.



AIR-FLOW HANDY 3.0 HANDPIECES

HANDY 3.0 | EL-540#HF/A

HANDY 3.0 PERIO | EL-542#HF/A

HANDY 3.0 PLUS | EL-545#HF/A



The patented single-use nozzle integrates 3 horizontal outlets to optimize the gentle turbulence of the air-powder mixture in the subgingival region. Another vertical outlet delivers water in the periodontal pockets to rinse the treatment area.



NOZZLE REFILLS:
DT-113HF (40 CT.)
DT-113HF/HF (160 CT.)



AIR-FLOW PLUS POWDER DV-117/A

AIR-FLOW PLUS powder is the first powder that is safe to use for supra- and subgingival biofilm removal but strong enough to efficiently remove light to moderate stain. The finest grain powder in dentistry, PLUS powder's erythritol-based, minimally abrasive spray can be used on virtually every patient.

- Erythritol
- 14 µm
- 120g per bottle

AIR-FLOW PERIO POWDER DV-110/A/HS

AIR-FLOW PERIO powder's fine, low-density grains safely and completely remove harmful biofilm and bacteria both supragingivally and subgingivally. Made from glycine, an amino acid, PERIO powder is gentle on enamel and restorative surfaces, making the patient experience more comfortable.

- Glycine
- 25 µm
- 120g per bottle

AIR-FLOW CLASSIC POWDER

The Classic powder offers the well-known cleaning efficiency of sodium bicarbonate with increased patient comfort due to a smaller average grain size than standard sodium bicarbonate powders.

While the Classic powder is primarily used for supragingival removal of biofilm and colorations, it can also be used for surface preparation before dental treatments.

- Sodium Bicarbonate
- 40 µm
- 300g per bottle

AVAILABLE FLAVORS:
Lemon | DV-1001
Cherry | DV-1006
Neutral | DV-1009
Mint | DV-1010

WHAT CLINICIANS ARE SAYING ABOUT AIR-FLOW THERAPY



“We are able to treat implant mucositis with AIR-FLOW Therapy without trauma to soft tissue and the implant surface itself. Patients accept it well. It is comfortable and is effective at removing biofilm around implant abutment margins.”

DR. SAM LOW, DDS, M.ED, MS



“Not all air-polishers on the market are designed to deliver the finer particle-sized powders like the AIR-FLOW series can. The smaller, particle size is desirable due to less potential to scratch surfaces and “sting” the patient. It’s a paradigm shift from cosmetic use to therapeutic use.”

NANCY MILLER, RDH, BA



“I use Plus powder (erythritol) for minimally-invasive biofilm removal on enamel, exposed dentin, inside deep periodontal pockets, on implants, around orthodontic bands, and on delicate restorative materials – everywhere! It is also effective on stain removal, saving me substantial time while protecting my patients’ teeth. No wonder my patients prefer this gentle treatment compared to traditional methods!”

KAREN DAVIS, RDH, BSDH

For more information, visit

HU-FRIEDY.COM/BIOFILM

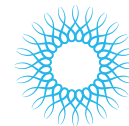
PREVENTIVE



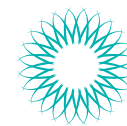
RESTORATIVE



ORTHODONTIC



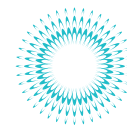
INSTRUMENT
MANAGEMENT



ENDODONTIC



SURGICAL



POWER



Hu-Friedy Mfg. Co., LLC: 3232 N. Rockwell St. | Chicago, IL 60618 | USA
Telephone: 1-800-Hu-Friedy or 1-773-975-6100 | Website: Hu-Friedy.com

©2018 Hu-Friedy Mfg. Co., LLC. All rights reserved. [557_2] HF-3473/0518

NOTE: Kavo, Midwest, W&H, Bien Air, Sirona and NSK are trademarks or registered trademarks of their respective owners.

