

INSTALLATION CHEAT SHEET

**Provide to your installing
technician prior to EMS
handover training**



Installation Requirement	AIRFLOW Device	Station DW-048B	Station+ DW-048A (with independent water supply)
AIRFLOW Prophylaxis Master FT-229	≡ ⚡ 💧	≡ 💧 ⚡	≡ ⚡
AIRFLOW One FT-230	≡ ⚡	≡ ⚡	

Key ≡ Air 💧 Water ⚡ Power

Please read the AIRFLOW Prophylaxis Master or AIRFLOW One Instructions for Use carefully prior to use. This document does not replace these Instructions. The instructions for use are available for download in PDF format at www.myems.dental using the Product/Key Code FT-229 (AIRFLOW Prophylaxis Master) or FT-230 (AIRFLOW One). It is essential to first read and understand all the instructions for use before operating the device and using the related accessories.

- Equipment included with the purchase of your AIRFLOW Prophylaxis Master or AIRFLOW One:
 - Hose EH-142-US for air, with quick coupling
 - Hose EG-110-US for water, with quick coupling



EH-142-US



EG-110-US



The use of cables and accessories other than those supplied by EMS may negatively affect EMC performance. Use only parts supplied by EMS.

- **POWER SOURCE:**

- Voltage: 100-240
- Vac Frequency: 50 to 60
- Hz Operating current: 4 A
- max

Class-I insulating system - requires protective earth (DO NOT INSTALL the device if your dental practice does NOT have protective earth). Plug the device only into an F1 protected mains supply. Check that the rated voltage of the device is suited

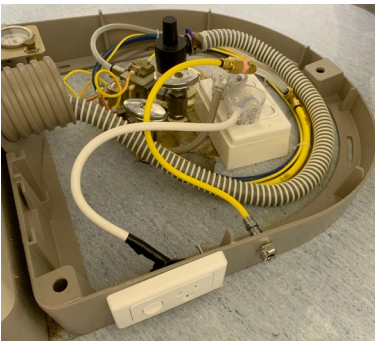
- **COMPRESSED AIR SOURCE** - Please make sure it is NON-REGULATED

- Pressure: as close to 87 psi as possible (min 79 psi, max 101 psi)

- **WATER SOURCE** – Filtered drinking water
 - Pressure: 30 to 72 psi
 - Temperature: 10°C to 30°C
- **IMPORTANT**
 - Please make sure the connectors for your air and water are different, so they cannot be switched (flooding your unit due to incorrect connectors is NOT covered by your EMS warranty).
 - Ideally, the air/water connections and the power point should be located in close proximity and at the base of the dental chair (see example below)
 - If an existing water connection is present and not needed, please conceal the connection
 - For dental practices with an Airflow Station or Station+, please do not dispose of the allen key (Torx Key T20) that is included with your Station or Station+. There are two magnets located under the Station and the allen key must remain there at all times when not in use.

For customers with a Station or Station+ please remember to screw your AIRFLOW device to the Station or Station+

- **IDEAL**



E.M.S Electro Medical Systems Corporation

11886 Greenville Avenue, #120

Dallas, TX 75243 - USA

Email: info@ems-na.com Website: www.ems-company.com