

# BeutiBond Universal

SELF-ETCH ADHESIVE

Making the Bonding Process Highly Reliable



# Maximum Bond Strength and Versatility, Minimum Technique Sensitivity

BeautiBond Universal is a latest-generation, light-cured, self-etch, single-component dental adhesive, designed not only for direct restorations with composite resins and repairs of restorations, but also for the permanent cementation of indirect restorations (including veneers) with light or dual-cured resin cements, and for core build-ups with composite resins and resin cements. Its ease of use, low technique sensitivity and simplified one-step application procedure make the bonding process consistently reliable and efficient – for long-lasting clinical results.

## HEMA-free formulation

The key feature of this practical adhesive is a special HEMA-free formulation of phosphonic and carboxylic acid monomers. This formulation helps you to virtually avoid any whitening of gingival tissues during application and any postoperative sensitivity, and substantially enhances the hydrolytic stability of the cured adhesive layer – for a durable bond, increasing reliability in your daily practice and improving the longevity of your patients' restorations.

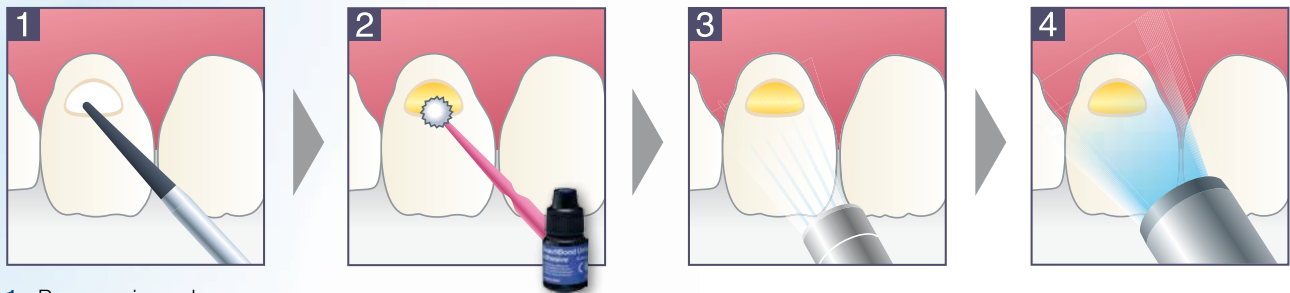
- High bond strength combined with minimised technique sensitivity
- Easy water separation and removal thanks to HEMA-free formulation
- Elimination of the allergenic potential of HEMA
- Application time of only 30 seconds
- Very low film thickness of approx. 5 µm
- Extended range of indications with BeautiBond Universal CR Enhancer and DC Activator



## Achieve Reliable Bond Strengths in a Few Seconds

One component – one application step: The elimination of inconvenient work steps, such as mixing and repeated application, makes bonding both quick and easy. After less than 30 seconds, you can begin to build up your restoration.

### Simple step-by-step procedure

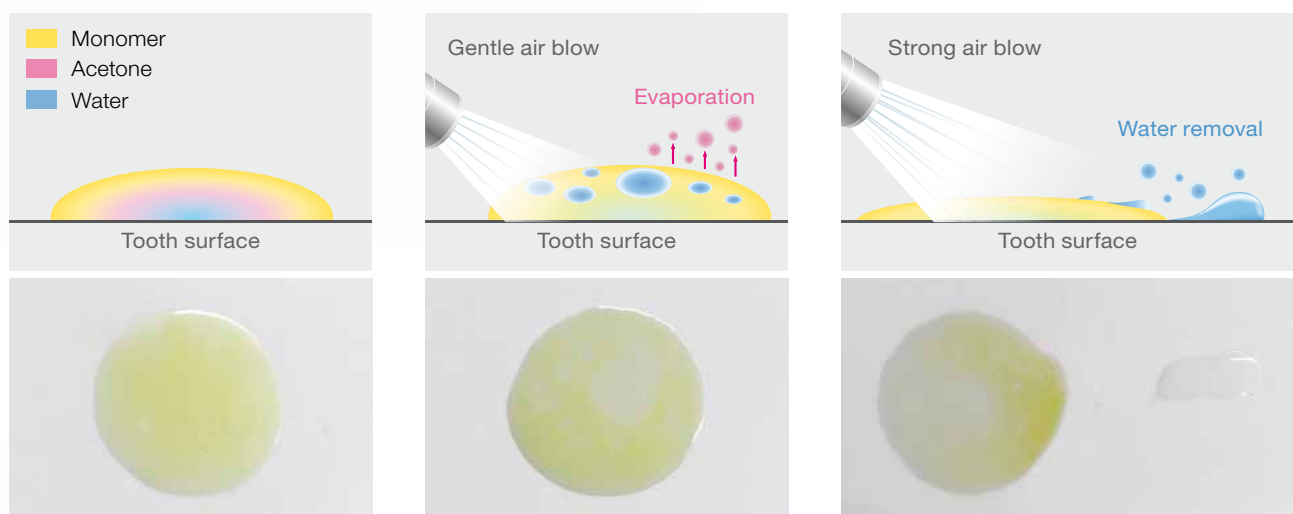


- 1 Prepare, rinse, dry
- 2 Apply BeautiBond Universal to entire bonding surface, leave undisturbed for 10 sec.
- 3 Dry with gentle air for 3 sec., then with stronger air
- 4 Light-cure (LED: 5 sec., Halogen: 10 sec.)

## Superior Bond Strength Starts with Application and Drying

The high bond strengths to natural tooth structure and various dental materials provided by BeautiBond Universal are supported by its HEMA-free formulation, which facilitates the separation of the aqueous phase after application. This improvement in handling is crucial to the minimised technique sensitivity of our multi-functional one-bottle adhesive – it sets the stage for a durable and reliable bond!

The optimised consistency of BeautiBond Universal makes work easier in several ways: The adhesive adapts very well and can be applied both economically and precisely – this is particularly important when performing minimally invasive dentistry.



Uniform adhesive layer during application (mixture of monomer, water and acetone)

Non-uniform adhesive layer consisting of water and hydrophobic monomer after gentle evaporation of the solvent

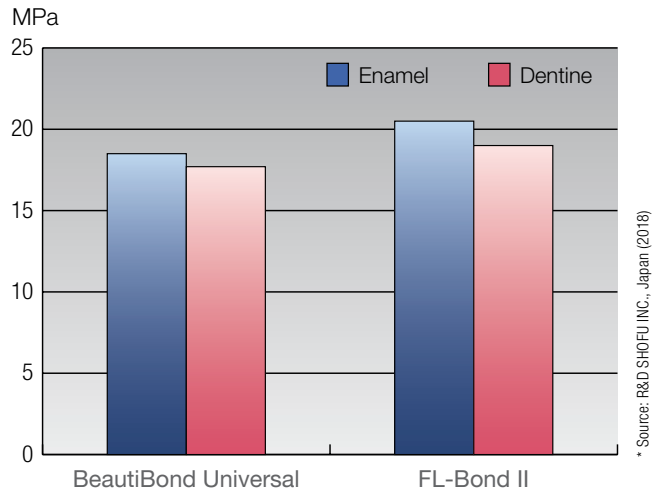
Uniform, water-free adhesive layer after brief drying with strong air

## Strong Bonds to Enamel and Dentine

In internal comparative testing, BeautiBond Universal has been shown to provide similar enamel and dentine bond strengths as a well-established, commercially available two-step adhesive (FL-Bond II). In other words: Coming with the benefit of quick and reliable etching, priming and bonding in one step, BeautiBond Universal is an effective and durable alternative to multibottle adhesive systems.

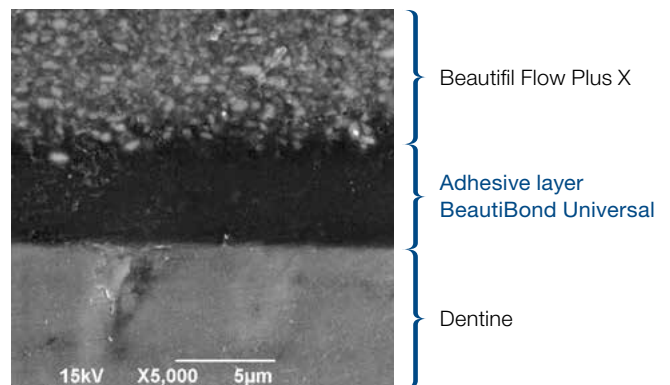
And with its two accessory materials (BeautiBond Universal CR Enhancer and DC Activator), this new adhesive can be used on various dental substrates for a wide range of indications!

### Shear bond strength to enamel and dentine\* (self-etch technique, after 24 h in water at 37 °C)



## Minimum Film Thickness for Maximum Aesthetics

As an unfilled adhesive, BeautiBond Universal features a very low film thickness of approx. 5 µm, which is particularly advantageous when performing minimally invasive dentistry. Even in cavities that are small, shallow and/or close to the gingiva, the adhesive film leaves enough space for highly aesthetic restorations, reliably bonded and indiscernible in the visible zone.



## Excellent clinical result: Imperceptible direct restoration



Before preparation



Application of BeautiBond Universal



After filling and light-curing

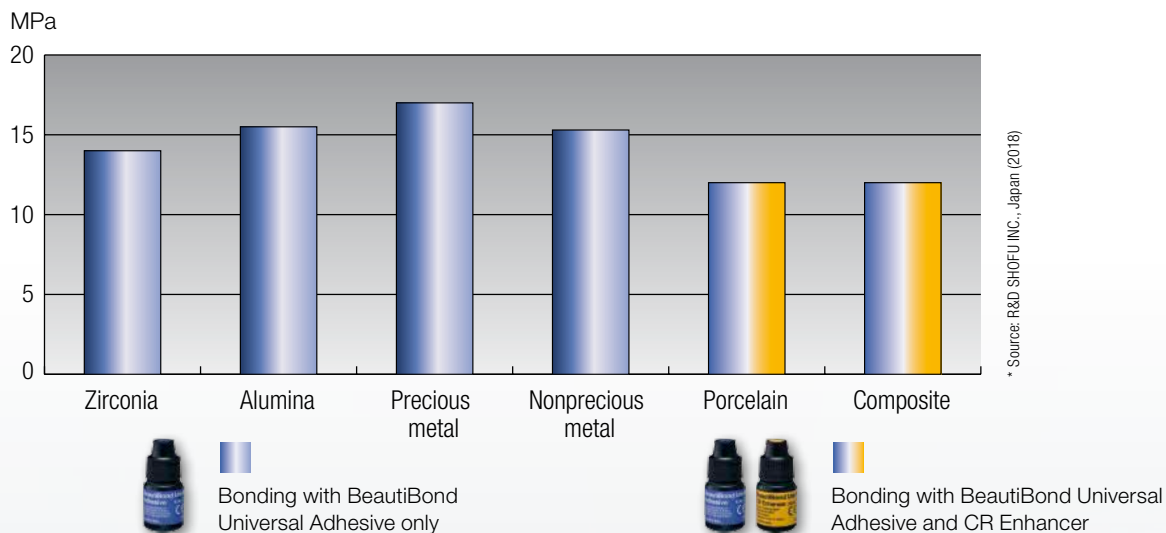


# 1-Bottle Adhesive with 2 Accessory Materials for Universal Applicability

Whether bonding of direct composites, repair of fractured ceramic or composite restorations, core build-ups with composites, or permanent cementation of indirect restorations with light or dual-cured resin cements: BeautiBond Universal is the adhesive of choice for a wide range of indications.

Thanks to its special chemistry and optional priming with BeautiBond Universal CR Enhancer, it optimally bonds to enamel and dentine, zirconia and alumina ceramics, metals, silicate glass and lithium silicate ceramics, and cured composites. Another advantage of our system: The BeautiBond Universal DC Activator, which can be quickly and easily mixed with the universal adhesive in equal proportions, allows you to pretreat resin cements, dentine and composites for core build-ups and activate dual curing.

## Tensile bond strength to indirect substrates \* (after 24 h in water at 37 °C)



## Indications of the extended 3-bottle universal adhesive system:

- **BeautiBond Universal Adhesive**  
multifunctional adhesive for direct restorations and intraoral repairs with light-cured composite resins
- **BeautiBond Universal Adhesive + CR Enhancer**  
Cementation of indirect restorations (including veneers) made of silicate glass, lithium silicate and composites with light or dual-cured resin cements
- **BeautiBond Universal Adhesive + DC Activator**  
Activation of dual curing and pretreatment of core build-ups made of light or dual-cured materials

# Order Information

## BeautiBond Universal



### Adhesive Kit

- BeautiBond Universal Adhesive 6 ml
  - Disposable Brush Fine (50 pcs.)
  - SHOFU V-Dish (25 pcs.)
- PN Y2440



Adhesive  
6 ml  
PN Y2441



DC Activator  
3 ml  
PN Y2443



CR Enhancer  
3 ml  
PN Y2444

## Related Products



### Beautifil Flow Plus X F00 / F03\*\*

Injectable hybrid composite in two viscosities for build-up and filling – suitable for all indications



### Beautifil II LS\*\*

Low-shrinkage pasty universal composite



### BeautiCem Veneer

Light-cured resin cement for the luting of veneers and translucent inlays/onlays



VIDEO  
Easy separation  
of monomer and  
water

\*\* also available as tips



**SHOFU INC.** 11 Kamitakamatsu-cho, Fukuine, Higashiyama-ku, Kyoto 605-0983, Japan  
**SHOFU DENTAL GmbH** Am Brühl 17, 40878 Ratingen, Germany, [www.shofu.de](http://www.shofu.de)

SHOFU is a registered trademark of SHOFU INC. All other trademarks and registered trademarks are the property of their respective holders. SHOFU INC. reserves the right to change specifications without notice.

Official Partner



180402 - 08/2019