



广州瑞通增材科技有限公司
RITON ADDITIVE TECHNOLOGY CO., LTD

电话 (Tel.) :+86-20-81509265
传真 (Fax) :+86-20-81509362
邮箱 (E-mail) :sales@riton3d.com
网址 (Web.) :www.riton3d.com
地址:广州市荔湾区花地大道南海南工贸区B栋
Add.:Building B,Hainan Industrial Zone,Liwan District,Guangzhou 510378 P.R. China

     Riton3d



www.riton3d.com

齿科数字化方案全栈运营商
FULL-STACK OPERATOR OF DENTAL DIGITIZATION SCHEME

CONTENTS
目录

1 齿科专用3D打印设备
3D PRINTING EQUIPMENT FOR DENTISTRY P 01-20

树脂3D打印机
RESIN 3D PRINTER

RXDent-L190 P 01

RXDent-L230 P 03

RXDent-D190 P 05

树脂打印辅助设备
RESIN PRINTING AUXILIARY EQUIPMENT

RXDent-W90s 固化箱 P 07
RXDent-W90s Curing Box

金属3D打印机
METAL 3D PRINTER

D-100 P 13

D-150 P 13

DUAL-150 P 15

DUAL-200 P 16

TI-150 P 17

M-150 P 19

金属打印辅助设备
METAL PRINTING AUXILIARY EQUIPMENT

抛光机
Polishing Machine P 21

热处理炉
Heat treatment furnace P 22

小锯床
Cutting machine P 22

氮气发生器
N2 Gas generator P 22

吸尘器
Vacuum cleaner P 22

2 齿科专用3D打印材料
SPECIAL 3D PRINTING MATERIALS FOR DENTISTRY P 23-26

树脂材料
RESIN MATERIAL

金属材料
METAL MATERIAL

3 椅旁数字化系统 & 完整数字化口腔生态链
IN-OFFICE DIGITAL SYSTEM
& COMPLETE DIGITAL ORAL ECOLOGICAL CHAIN P 27-28

4 体贴高效的技术服务
CONSIDERATE AND EFFICIENT TECHNICAL SERVICE P 29

5 关于我们
ABOUT US P 31-34

Born for professional, to ensure the quality of dental processing

为专业而生，保证齿科加工所生产质量



设备名称 Equipment name	RXDent-L190
成型尺寸 Forming size	192X120X150 (mm)
像素大小 Pixel size	50μm
层厚设置 Layer thickness setting	0.025-0.3mm
打印速度 Printing speed	8s/层
波长 wavelength	405nm
分辨率 resolving power	3840X2400 (px)
整机功率 Overall power	300W
文件格式 file format	STL
设备尺寸 Equipment dimensions	370×370×530mm
设备重量 Equipment weight	27kg



4K高清黑白屏
4K HD BLACK AND WHITE DISPLAY

3840X2400分辨率
3840*2400 RESOLUTION RATIO



调平免设置
AUTOMATIC LEVELING

到手即用方便快捷
HANDY AND QUICK



光强稳定
STABLE LIGHTING

光均匀度达到95%以上
THE LIGHT UNIFORMITY OF ABOVE 95%



8倍抗锯齿
8X EDGE ANTI ALIASING

支持边缘抗锯齿
SUPPORTS EDGE ANTI ALIASING



静音打印
PRINT IN SILENCE

更低的打印噪音
LOWER PRINTING NOISE



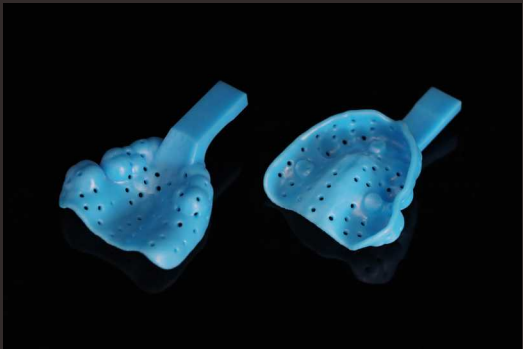
超高打印速度
High-speed PRINTING

打印一层仅需8秒
8 SECONDS FOR 1 LAYER OF PRINTING

RXDent-L190

RXDent-L190是瑞通面向义齿加工厂推出的一款高性价比的LCD打印机，它不仅效率更高，而且操作简单，精致的外观设计与良好的交互体验，使椅旁数字化生产更便捷、更高效，为齿科客户带来即刻诊疗、及时修复等服务体验，为实现生产数字化转型提供最优解决方案。

RXDent-L190 is a cost-effective LCD printer launched by Riton for denture processing plants. It is not only more efficient, but also simple to operate. Its exquisite appearance design and good interaction experience make in-office system digital production more convenient and efficient, bring immediate diagnosis and treatment, timely repair and other service experiences to dental customers, and provide the best solution for realizing digital production transformation.



RXDent-L230

BORN FOR SPEED IMPROVE THE EFFICIENCY OF
DIAGNOSIS IN DENTAL HOSPITALS

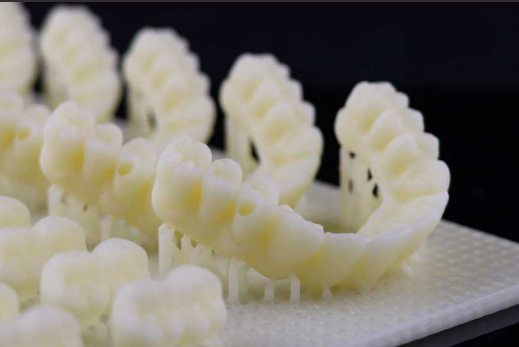
为速度而生，提高口腔医院诊疗效率

RXDent-L230是瑞通面向齿科应用推出的一款专业定制化“高精度”“大幅面”打印机，有着非常出色的稳定性与高效率的成型速度，具备专业、轻量、敏捷的基础特性。

相比RXDent-L190, L230的打印幅面更大，分辨率更高，速度更快，为牙科技工所实现生产数字化转型提供最优解决方案。

Rxdent-l230 is a professional custom-made “High-precision” “Large format” printer for dental applications. It has excellent stability and high-efficiency molding speed, with professional, lightweight, agile and basic features, compared to RXDent-L190, L230 print larger, higher resolution, faster, for the dental technician to achieve digital production transformation to provide the optimal solution.

设备名称 Equipment name	RXDent-L230
成型尺寸 Forming size	228X128X150 (mm)
像素大小 Pixel size	30μm
层厚设置 Layer thickness setting	0.025-0.3mm
打印速度 Printing speed	6s/层
波长 wavelength	405nm
分辨率 resolving power	7680X4320 (px)
整机功率 Overall power	300W
文件格式 file format	STL
设备尺寸 Equipment dimensions	370×370×530mm
设备重量 Equipment weight	27kg



8K高清黑白屏
8K HD BLACK AND WHITE DISPLAY

7680X4320分辨率
7680*4320 RESOLUTION RATIO

调平免设置
AUTOMATIC LEVELING

到手即用方便快捷
HANDY AND QUICK

光强稳定
STABLE LIGHTING

光均匀度达到95%以上
THE LIGHT UNIFORMITY OF ABOVE 95%

8倍抗锯齿
8X EDGE ANTI ALIASING

支持边缘抗锯齿
SUPPORTS EDGE ANTI ALIASING

静音打印
PRINT IN SILENCE

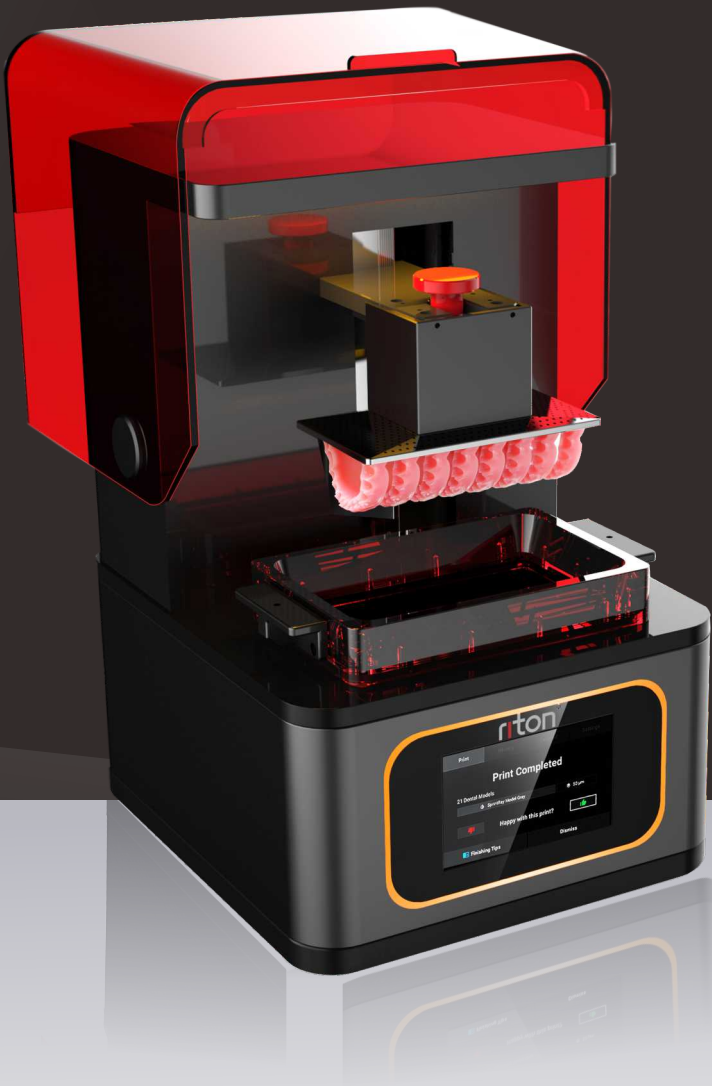
更低的打印噪音
LOWER PRINTING NOISE

超高打印速度
High-speed PRINTING

打印一层仅需6秒
6 SECONDS FOR 1 LAYER OF PRINTING

BORN FOR INTELLIGENCE, CHANGE THE DIAGNOSIS
AND TREATMENT PLAN OF DENTAL HOSPITALS

为智能而生，改变口腔医院诊疗方案



设备名称 Equipment name	RXDent-D190
成型尺寸 Forming size	192X108X150 (mm)
像素大小 Pixel size	75μm
层厚设置 Layer thickness setting	0.025-0.3mm
打印速度 Printing speed	6s/层
波长 wavelength	405nm
分辨率 resolving power	1920×1080 (px)
整机功率 Overall power	300W
文件格式 file format	STL
设备尺寸 Equipment dimensions	520×430×960mm
设备重量 Equipment weight	42kg

RXDent-D190

RXDent-D190是瑞通面向齿科应用推出的一款高效率打印机，也是针对椅旁批量生产打造的一款桌面级3D打印机。精致的外观设计与良好的交互体验，使椅旁数字化生产更便捷、更高效，为齿科客户带来即刻诊疗、及时修复等服务体验，为实现生产数字化转型提供最优解决方案。

Rxdent-D190 is an efficient printer for dental applications and a desktop-level 3D printer for in-office system mass production. The exquisite appearance design and the good interaction experience, causes the in-office system digital production to be more convenient, the more efficient, for the dentistry customer to bring the instant diagnosis treatment, the prompt repair and so on service experience, provide the optimal solution for realizing the production digitization transformation.



进口DLP光机
IMPORTED DLP OPTICAL MACHINE
1920X1080分辨率
1920*1080 RESOLUTION RATIO



调平免设置
AUTOMATIC LEVELING
到手即用方便快捷
HANDY AND QUICK



光源稳定
STABLE LIGHT SOURCE
寿命高达20000小时
SERVICE LIFE UP TO 20000 HOURS



8倍抗锯齿
8X EDGE ANTI ALIASING
支持边缘抗锯齿
SUPPORTS EDGE ANTI ALIASING



静音打印
PRINT IN SILENCE
更低的打印噪音
LOWER PRINTING NOISE



超高打印速度
High-speed PRINTING
打印一层仅需6秒
6 SECONDS FOR 1 LAYER OF PRINTING



RXDENT - W90S CURING BOX
RXDent-W90S 固化箱

RXDent-W90s是配合RXDent—D系列打印机使用的一款固化设备，设备内部共有9个紫外灯带，可快速固化模型表面，进而提高表面硬度。

RXDent-W90s is a curing device with RXDent-D series printers. There are 9 UV lamps in the device, which can quickly solidify the model surface and improve the surface hardness.

设备名称 Equipment name	RXDent-W90s
设备尺寸 Equipment dimensions	300×360×350mm
波长 wavelength	405nm
灯光功率 Lighting power	80w
设备重量 Weight of equipment	11.5kg
整机功率 Overall power	400W



METAL 3D PRINTER 金属3D打印机

瑞通增材D系列金属激光3D打印机是一款专为牙科金属类修复体制作而设计的3D打印设备。采用口腔数字化3D打印技术,即患者无需咬合牙模,医生通过三维口腔扫描仪,形成数字模型,就可以把义齿基底冠打印出来。

Riton Additive D series metal laser 3D printer is a 3D printing equipment specially designed for the production of dental metal restorations. Using oral digital 3D printing technology, that is, the patient does not need to bite the dental model, the doctor can use the three-dimensional oral scanner to form a digital model, and then the denture base crown can be printed out.



瑞通增材D系列产品优势

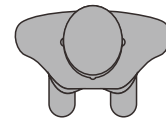
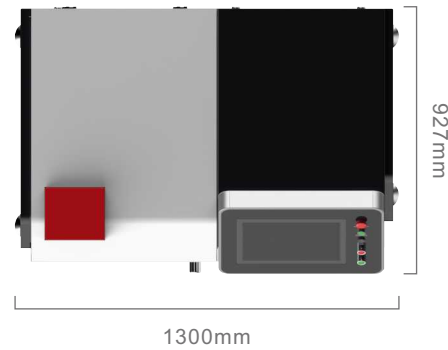
ADVANTAGES OF RITON ADDITIVE D SERIES PRODUCTS

- 设备占地面积小,适应了义齿厂场地局限问题;
The equipment covers an area of small, adapt to the limitation of denture factory site.
- 设备铺粉行程短,打印效率相比同类设备至少提高30%;
Short powder spreading stroke. The printing efficiency of the equipment is at least 30% higher than that of similar equipment.
- 成型仓空间小,打印前工作人员无需设备充气等待;
Compact molding chamber, so the staff does not need to inflate the equipment before printing.
- 打印底板采用磁吸固定方式,设备打印前无需手动调平;
The printing baseplate is fixed by magnetic suction, and manual leveling is not required before printing.
- 设备光路及电路部分与粉末成型部分完全隔离,充分保证设备的寿命。
The optical module and circuit part of the equipment are completely isolated from the powder forming part, which fully guarantees the service life of the equipment.

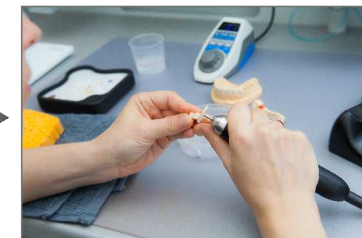
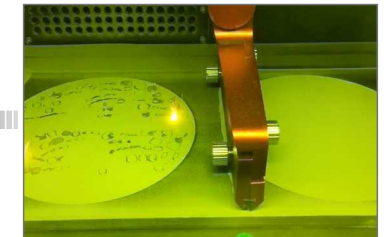
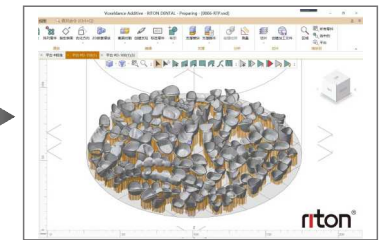
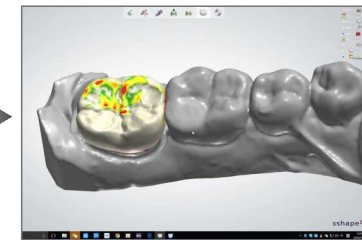
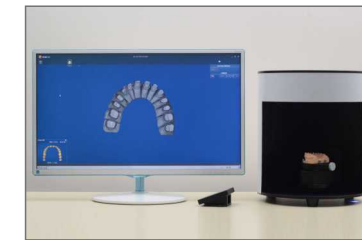
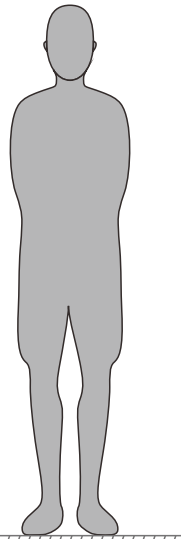
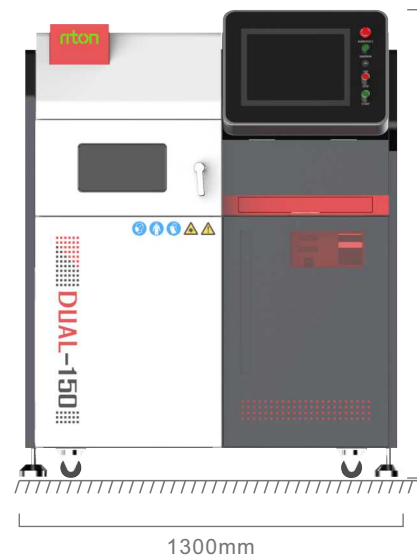
3D PRINTING PROCESS

3D打印流程

俯视图



正视图



SPECIAL PRINTING EQUIPMENT FOR CERAMIC FUSED TO METAL INNER CROWN

金属烤瓷内冠专用打印设备



D-100

效率:3小时加工100颗金属底冠
Efficiency: 100 metal base crowns are processed in 3 hours

D-150

效率:4.5小时加工200颗金属底冠
Efficiency: 200 metal base crowns are processed in 4.5 hours

牙冠专用机 Special machine for Tooth Crown	D-100	D-150
激光光源 Laser source	单光纤激光器 Single Fiber lasers	
单激光输出功率 Output power of single laser	≤300W ≤300W	
激光波长 Laser wavelength	1.064微米 1.064μm	
扫描速度 Melting speed	≤14000mm/s ≤14000mm/s	
打印范围 Melting area	直径100m m Φ100mm	直径150m m Φ150mm
打印层厚 Melting thickness	20-50微米可调 20-50 μm	20-60微米可调 20-60 μm
保护气体 Protect gas	氮气或氩气 Nitrogen / Argon	
生产效率 Production	3小时可加工100颗金属牙冠或7个金属支架 100 pieces of crown/7pieces of partial frame need 3 hours	4.5小时可加工200颗金属牙冠或14个金属支架 200 pieces of crown/14 pieces of partial frame need 4.5 hours
整机功率 Power supply	3KW 220V 3KW 220V	
主机重量 Whole weight	600公斤 600kg	
主机尺寸 Dimension	1300mmx927mmx1650mm 1300mmx927mmx1650mm	
打印材料 Melting material	钴铬合金 CoCr	
安装环境 Environment request	15℃-35℃, 湿度: ≤95%, 无振动 Temp 15 ℃-35℃, Humidity≤95%, No vibration	



SPECIAL FOR PARTIAL FRAME
支架专用机



DUAL-150

- 效率:3小时可加工15-17个金属支架
Efficiency: 15-17 metal supports can be processed in 3 hours
- 应用场景:小型义齿厂
Application scenario: Small denture laboratory

DUAL-200

- 效率:5.5小时可加工35个金属支架
Efficiency: 35 metal supports can be processed in 5.5 hours
- 应用场景:中大型义齿厂
Application scenario: Medium and large denture laboratory

支架专用机 SPECIAL FOR PARTIAL FRAME	DUAL-150	DUAL-200
激光光源 Laser source	双光纤激光器 Double Fiber lasers	
单激光输出功率 Output power of single laser	≤500W ≤500W	
激光波长 Laser wavelength	1.064微米 1.064μm	
扫描速度 Melting speed	≤14000mm/s ≤14000mm/s	
打印范围 Melting area	直径150mm Φ150mm	150mmx220mm 150mmx220mm
打印层厚 Melting thickness	20-60微米可调 20-60 μm	
保护气体 Protect gas	氮气或氩气 Nitrogen / Argon	
生产效率 Production	3小时可加工200颗金属牙冠或14个金属支架 200 pieces of crown/14pieces of partial frame need 3 hours	5.5小时可加工430颗金属牙冠或35个金属支架 430 pieces of crown/35pieces of partial frame need 5.5 hours
整机功率 Power supply	4KW 220V 4KW 220V	
主机重量 Whole weight	650公斤 650kg	680公斤 680kg
主机尺寸 Dimension	1300mmx927mmx1650mm 1300mmx927mmx1650mm	
打印材料 Melting material	钴铬合金/钛合金 (钛合金需配置手套箱, 防爆循环) CoCr /Titanium(with glove box and explosion-proof circulation for Titanium)	
安装环境 Environment request	15℃-35℃, 湿度: ≤95%, 无振动 Temp 15 ℃-35℃, Humidity≤95%, No vibration	

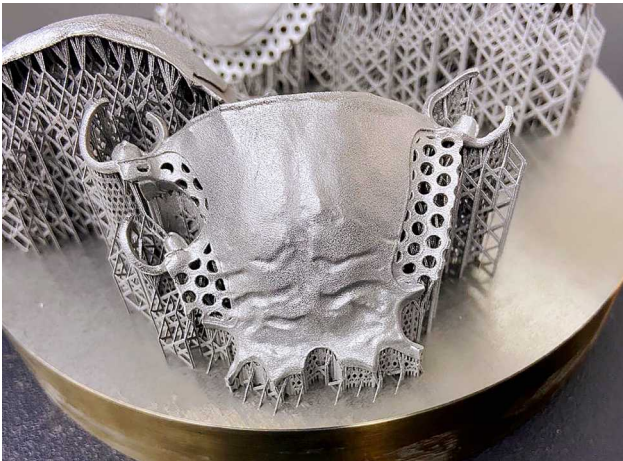
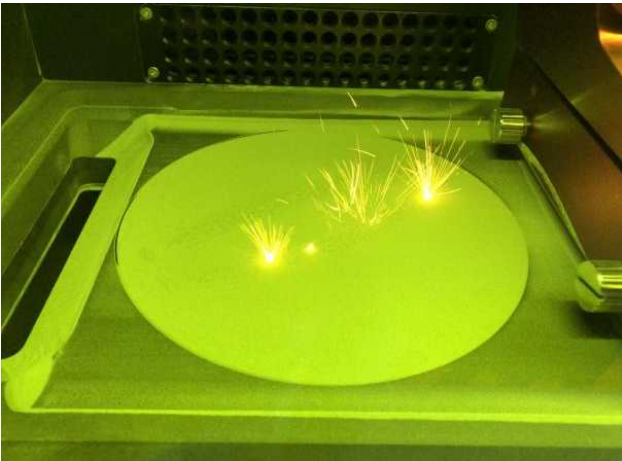


THE MAIN PARAMETER OF TI-150

TI-150设备主要参数



激光光源:单光纤激光器 Laser source: Single Fiber lasers
激光输出功率:500W Output power of laser: ≤500W
激光波长:1.064微米 Laser wavelength: 1.064μm
扫描速度:≤14000 mm/s Melting speed: ≤14000mm/s
打印范围:直径150mm Melting area: Φ150mm
打印层厚:20-60微米可调 Melting thickness:20-60 μm
保护气体:氩气 Protect gas: Argon
生产效率:4.5小时可加工200颗金属牙冠或14个金属支架 Production: 200 pieces of crown/14 pieces of partial frame need 4.5 hours
整机功率:3KW 220V Power supply: 3KW 220V
主机重量:620公斤 Whole weight: 620kg
主机尺寸:1300mmx1050mmx1650mm Dimension: 1300mmx1050mmx1650mm
打印材料:钛合金 Melting material: Titanium
安装环境:15°C-35°C,湿度:≤95%,无振动 Environment request: Temp 15°C-35°C, Humidity≤95%, No vibration



手套箱的优势
ADVANTAGES OF THE GLOVE BOX

- 由于钛粉末是活性金属，加装手套箱可减少粉末与空气的接触，有效控制水氧，避免氧化，提高产品质量；
Since titanium powder is an active metal, installing a glove box can reduce the contact between powder and air, effectively control water and oxygen, avoid oxidation, and improve product quality;
- 可在密封的保护气氛下装卸基板、取样等，提高操作安全性，减少环境扬尘污染；
The printing plate can be loaded and unloaded in a sealed protective atmosphere, sampling, etc. to improve operational safety and reduce environmental dust pollution;
- 减少操作人员与钛粉直接接触，可避免粉末过敏。
Reduce the direct contact between the operator and the titanium powder to avoid powder allergy.



THE MAIN PARAMETER OF M-150

M-150设备主要参数



激光光源:单光纤激光器 Laser source: Single Fiber lasers
激光输出功率:500W Output power of laser: ≤500W
激光波长:1.064微米 Laser wavelength: 1.064μm
扫描速度:≤14000 mm/s Melting speed: ≤14000mm/s
打印范围:直径150mm x 120mm Melting area: Φ150mm x 120mm
打印层厚:20-50微米可调 Melting thickness:20-50 μm
保护气体:氮气或氩气 Protect gas: Nitrogen / Argon
生产效率:3小时可加工100颗金属牙冠或7个金属支架 Production: 100 pieces of crown/7 pieces of partial frame need 3 hours
整机功率:2.5KW 220V Power supply: 2.5KW 220V
主机重量:500公斤 Whole weight: 500kg
主机尺寸:790mm x 1010mm x 1670mm Dimension: 790mm x 1010mm x 1670mm
打印材料:钴铬合金/钛合金(需配置手套箱,防爆循环及自动筛粉系统) Melting material: CoCr /Titanium(with glove box and explosion-proof circulation for Titanium)
安装环境:15°C-35°C,湿度:≤95%,无振动 Environment request: Temp 15°C-35°C, Humidity≤95%, No vibration

➤ 设备稳定性高 High Equipment Stability

考虑到金属打印的金属粉尘会进入设备电路,将设备电路部分与粉末成型部分彻底隔离,确保了设备长时间运行的稳定性及延长了设备的使用。

Considering that metal dust from metal printing can enter the equipment circuit, the circuit part of the equipment is completely isolated from the powder forming part, ensuring the stability of long-term operation of the equipment and extending its use.

➤ 设备效率高 High Equipment Efficiency

设备整体体积缩小,铺粉行程变短,打印一块只需要3小时即可。

The overall volume of the device is reduced, the powder spreading stroke is shortened, and printing a board only takes 3 hours.

➤ 设备操作灵活 Flexible Equipment Operation

成型仓变小,充气时间变短,操作人员无需等待;打印底板固定无需手动调平即可打印;所有运动部件为隐藏式密封结构,设备清理方便。

The molding warehouse becomes smaller, the inflation time becomes shorter, and operators do not need to wait; The printing base plate is fixed and can be printed without manual leveling; All moving parts are of a concealed sealed structure, making equipment cleaning convenient.

➤ 材料开源 Open Source Materials

客户可根据需要加入不同的金属粉末,包括不锈钢、钴铬合金、钛合金等。

Customers can add different metal powders as needed, including stainless steel, cobalt chromium alloy, titanium alloy, etc.



POLISHING MACHINE

抛光机



高分子抛光系列
Polymer polishing machine

超级等离子抛光系列
Plasma polishing machine

瑞通增材自动化金属抛光机适应于客户的各种特定需求,其中包括牙医、小型加工厂、大型加工厂乃至整个行业。

我们与您共同追求完美。您对设备的可靠性和质量的最高要求,产生了我们的高分子系列、超级等离子系列“双核心”表面优化解决方案。

瑞通增材创建了一套行业认可、经济高效、环保省时的表面优化系统,支持并符合医疗器械要求。

Riton Automatic Metal Polishing Machine is adapted to the specific needs of customers, including dentists, small dental processing plants, large dental processing plants and even the entire dental industry.

We work with you to pursue perfection. Your highest requirements for equipment reliability and quality have resulted in our polymer series and super plasma series "dual core" surface optimization solutions.

Riton has created an industry-recognized, cost-effective, environmentally-friendly and time-saving surface optimization system to support and meet the requirements of medical devices.



AUXILIARY EQUIPMENT

金属打印辅助设备



热处理炉
Heat treatment furnaces
for eliminate metal stress



氮气发生器
N2 Gas generator



小锯床
The cutter for cutting
the metal crown



吸尘器
Vacuum cleaner for
cleaning equipment

RESIN MATERIAL 树脂材料

Riton系列齿科专用光固化树脂材料为瑞通自主研发材料,也是取得医疗器械认证备案的光固化树脂材料。

Riton系列包含模型树脂、水洗模型树脂、种植导板树脂、仿真牙龈树脂、美学树脂等多种材料,为实现生产数字化转型的齿科客户提供最优解决方案。

Riton series of dental light curing resin materials for the independent research and development of Riton materials, is also a medical device certification of light curing resin materials. The Riton series consists of Model V1.0/V3.0, Model V2.0, Surgical Guide, Gingiva Mask, HRi and other materials, providing the optimal solution for the dental customers to achieve the transformation of digital production.



P 23 齿科专用3D打印材料 SPECIAL 3D PRINTING MATERIALS FOR DENTISTRY



RESIN MATERIAL 树脂材料 P 24
RXDent-L230

METALLIC MATERIAL

金属材料

钴铬合金粉末

COBALT-CHROMIUM ALLOY POWDER

用于激光选区熔化的齿科专用钴铬合金粉末产品, 不含有镍、镉、铍、铅等有害元素, 因此生物相容性好, 并且具有拉伸强度高、硬度适中以及金瓷结合性能好等特点。产品适用范围包括固定修复类和活动修复类义齿。

Dental cobalt-chromium alloy powder products for laser selective melting do not contain nickel, cadmium, beryllium, lead and other harmful elements, so it has good biocompatibility, high tensile strength, moderate hardness and good metal-porcelain bonding performance. The products are applicable to both fixed and movable dentures.



钛合金粉末

TITANIUM ALLOY POWDER

牙科激光选区熔化钛合金粉末生物相容性好, 能够与口腔环境良好兼容; 成型后的修复体耐腐蚀、强度高, 不易变形, 使用周期更长; 导热慢, 异物感小, 佩戴舒适, 减少对牙龈的影响。

Titanium alloy powder melted by dental laser selective area has good biocompatibility and can be well compatible with oral environment; The molded prosthesis has corrosion resistance, high strength, difficult deformation and longer service life; Slow heat conduction, small foreign body sensation, comfortable wearing, and less influence on gums.



IN-OFFICE DIGITAL SYSTEM
& COMPLETE DIGITAL ORAL ECOLOGICAL CHAIN

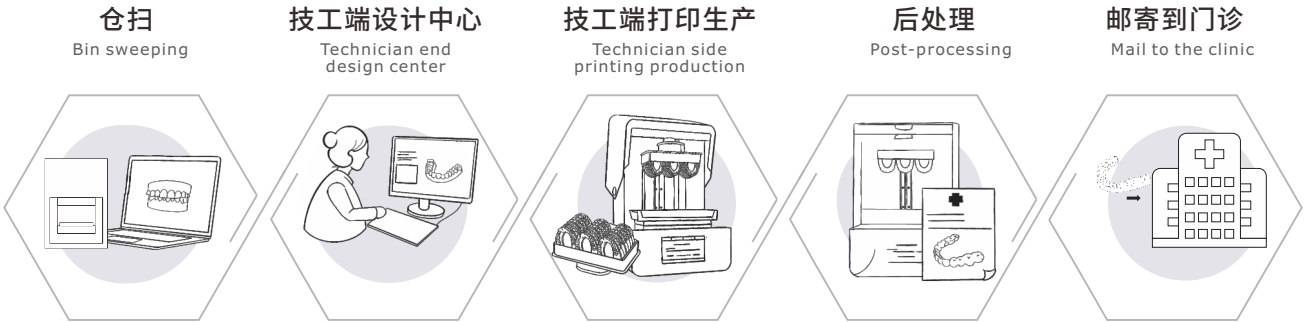
椅旁数字化系统&完整数字化口腔生态链

技工端

Dental Lab Application

数字化技术可以帮助技工更快更准确的对接数字化口腔门诊,实现口腔产品的定制与批量生产。

Digital technology can help technicians more quickly and more accurate docking digital oral clinic, to achieve customized oral products and mass production.



推荐材料：

模型树脂；

美学树脂；

仿真牙龈树脂。

Recommended materials:

Model V1.0

HRi

Gingiva Mask

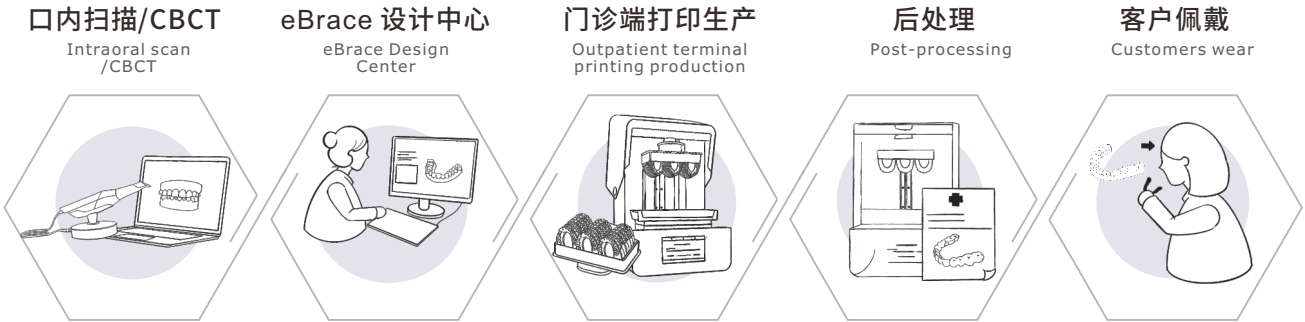


门诊端

Clinic Application

数字化技术可以帮助门诊端实现自行设计及生产,无需第三方协助,节约沟通时间,打造属于自己的品牌,提升诊疗体验,真正实现定制化批量生产。

Digital technology can help the outpatient department to realize its own design and production without third-party assistance, save communication time, build its own brand, improve the diagnosis and treatment experience, and truly realize customized mass production.



推荐材料：

水洗模型树脂；

美学树脂；

种植导板树脂。

Recommended materials:

Model V2.0

HRi

Surgical Guide



CONSIDERATE AND EFFICIENT TECHNICAL SERVICE

体贴高效的技术服务



RITON DIGITAL ORAL ECOLOGY CLOSED LOOP

瑞通数字化口腔生态闭环

应用互联网技术, 将医生、患者和瑞通生物的设计中心、加工中心、患者导流平台、临床正畸技术线上培训视频、临床正畸技术线下培训课堂密切联接, 形成了数字化生态闭环。

With the application of Internet technology, doctors and patients are closely connected with the design center, processing center, patient diversion platform, clinical orthodontic technology online training video and clinical orthodontic technology offline training classroom of Ruitong Biology, forming a digital ecological closed-loop.



COMPANY PROFILE

公司简介

广州瑞通公司成立于1997年，是一家以数字化口腔正畸，3D打印，医疗服务创新为技术核心，集自主研发生产和销售于一体的高新技术企业。公司拥有二十多年的激光设备制造经验，是国内最早将金属3D打印技术应用于牙科行业的企业；经过20多年的发展，瑞通增材的金属3D打印技术处于行业领先地位，是广东省高新技术企业，口腔3D打印行业标准制定单位之一，荣获广东省科技进步二等奖，并通过了一系列认证：包含国内ISO9000，欧盟CE及ROHS，北美FCC及IC等；拥有国内发明专利40余项，外观专利3项，计算机软件作品著作权12项，实用新型项目65项。

与国内近1000家义齿厂建立深度合作，锦冠桥义齿、富乔义齿、华新义齿、卓越义齿、速诚义齿、康隆义齿、丽尔美义齿等，设备出口至50多个国家，全球正在投入使用的金属3D打印设备超过1200台，设备销量在行业内遥遥领先，独占鳌头，是中国义齿行业3D打印设备制造领域当之无愧的龙头企业。

Guangzhou Riton 3D was founded in 1997. A high-tech enterprise focusing on Laser Technology, 3D printing, and Digital Dentistry innovation. Integrating independent R&D, production and sales. With more than 25 years of experience in laser equipment production, Riton 3d is the first company in China to apply metal 3D printing technology to the dental industry. As one of the standard setting units of the Oral 3D printing industry, won the second prize of Guangdong Science and Technology Progress, and passed a series of certifications: including ISO9000, CE and ROHS, FCC and IC, etc.; owns domestic inventions 40 patents, 3 appearance patents, 12 computer software copyrights, and 65 utility model projects.

Established in-depth cooperation with more than 1,000 denture laboratories, such as ADL, JGQ, LIERMEI, FUQIAO, DEPRAG, ZHENDE, PRO-TECH DENTAL GROUP, IDS, VUGIA, RHDIIUM etc. Riton 3d printer is exported to worldwide in more than 50 countries; North America, South America, Europe, East Asia, South Asia, West Asia, Middle East, All have riton printer in servicing. There are more than 1,200 Riton metal 3D printer in use around the world. The sales turnover in 3d metal printing are far ahead in the dental industry.



数字化、智能化是义齿制造行业的未来发展趋势：3D打印作为一种带有显著数字化特殊的制造技术，是口腔数字化加工链条中的重要一环，瑞通将始终保持义齿3D打印技术的专业性，并积累丰富的支架、牙冠设计经验；公司立足设备制造，逐渐发展成为“齿科数字化方案全栈运营商”，建立瑞通数字化设计管理平台，为义齿厂提供设备、数据处理、设计、软件、操作培训和售后服务全流程服务。

Digitization and intelligence are the future development trend of the denture manufacturing industry: 3D printing is a kind of significantly digital special manufacturing technology as an important part of the dental digital processing chain. Riton 3D will always maintain the professionalism of denture 3D printing technology, and accumulate rich experience in RPD and crown design; the company is based on equipment manufacturing and gradually developed into “Dental digital solution full-stack operator”, created a Riton digital design management platform to provide full-process services of equipment, data processing, design, software, operation training and after-sales service for the denture laboratories. Warm welcome to cooperate with us.



COOPERATIVE PARTNER
合作伙伴

