

RODIN™ 3D Resin

THE FUTURE IS HERE



Remarkable

Wear Resistance

Stunning

Natural-like Aesthetics

Successfully

Tested for Biocompatibility

Regulatory Approved

FDA 510k/Health Canada/
TGA Cleared

COMPATIBLE PRINTERS

Pac-Dent has validated Rodin™ 3D Resin in workflows with these select printers.



Ackuretta SOL



Asiga Max
(385 nm)



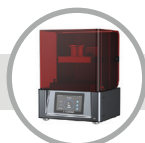
Asiga Pico 2
(385 nm)



Asiga Pro 4K
(385 nm)



Carbon
3D Printer



Flashforge®
Focus 6K



Nexa3D Xip



Phrozen Sonic®
4K 2022



Phrozen Sonic®
4K XL 2022



Phrozen Sonic®
Mini 4K



RayShape®
Edge E1



RayShape®
Shape 1+Dental



Shining 3D
AccuFab-D1s



Shining 3D
AccuFab-4D/L4K



WhipMix
VeriEKO



And More
Coming
Soon





Rodin™ Sculpture 2.0

Zirconia Nanohybrid

Rodin™ Sculpture 2.0 is the next monumental evolution of Pac-Dent's crown and bridge material. This zirconia-infused nanohybrid has been engineered to transcend the standards of permanent dental restorations. This next-generation resin achieves previously unseen levels of flexural strength and ceramic filler content, redefining what can be achieved through 3D printed restorations.

Benefits & Features



Unmatched Strength



Best in Class Radiopacity



Improved Aesthetics



Qualifies for Select ADA Reimbursement Codes



Optimal Durability and Toughness



Vita Classic Shade System Matching



Lifelike Incisal Translucency



FDA 510K/Health Canada/TGA Cleared

APPLICATIONS



Permanent Crowns



Bridges



Implants



Inlays & Onlays

Rodin Sculpture 2.0

- Recommended for Strength
- For temporary and permanent fixed restorations
- Improved Strength: Rodin™ Sculpture 2.0 boasts an impressive Biaxial Flexural Strength of 200 MPa
- Sculpture 2.0 now consists of over 60% ceramic filler content, providing a substantial increase in strength and superior X-ray radiopacity
- Class II Zirconia-Infused Ceramic Nanohybrid

Rodin Sculpture

- Recommended for Aesthetics
- For single crowns, inlays, onlays, and veneers, denture tooth arches, all-on-x provisionals
- Rodin™ Sculpture features a Biaxial Flexural Strength of 175 MPa, and a Flexural Modulus of 8800
- Rodin Sculpture consists of over 50% ceramic filler content
- Class II Ceramic Nanohybrid

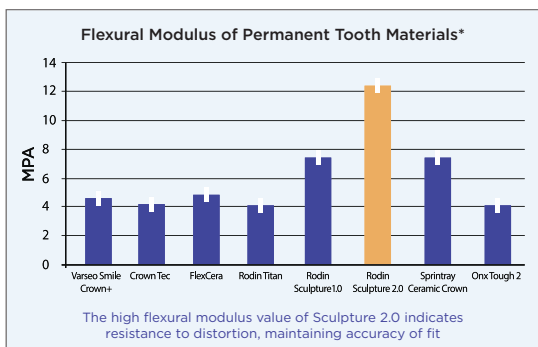
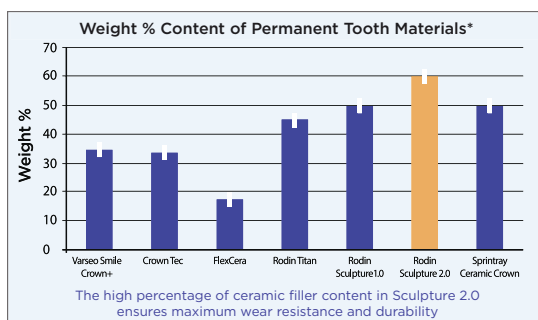
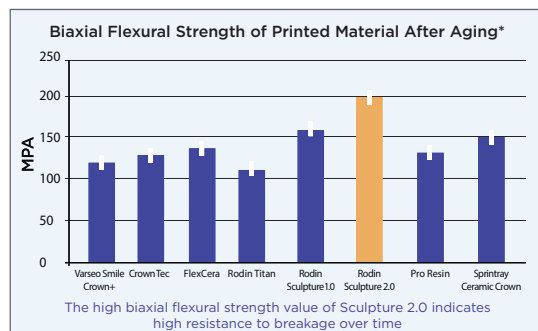
Rodin Titan

- Recommended for Flexibility
- For high impact prosthetic indications: (All on Xs, screw retained dentures, full arch denture teeth)
- Improved Flexibility: Rodin™ Titan features a significantly reduced flexural modulus, providing exceptionally high impact strength
- Rodin Titan features analogous ceramic filler content to Rodin Sculpture
- Class II Ceramic Nanohybrid



Rodin™ Sculpture 2.0

Zirconia Nanohybrid



*Third party validation data provided by Dr. Russell Giordano of Boston University

Order Information			
Shades	1.2 kg Bottle	600 g Bottle	300 g Bottle
OM1	23870	23888	23906
OM3	23869	23887	23905
A1	23875	23893	23911
A2	23876	23894	23912
A3	23877	23895	23913
A3.5	23878	23896	23914
A4	23879	23897	23915
B1	23871	23889	23907
B2	23872	23890	23908
B3	23873	23891	23909
B4	23874	23892	23910
C1	23880	23898	23916
C2	23881	23899	23917
C3	23882	23900	23918
C4	23883	23901	23919
D2	23884	23902	23920
D3	23885	23903	23921
D4	23886	23904	23922



Analysis of Rodin Sculpture reveals a highly filled printable resin with good mechanical properties that actually meets the ADA criteria for classification as a ceramic restorative material. Nearly all other printable materials marketed as permanent restorations do not meet this standard.

- Dr. Russell Giordano II, D.M.D., D.M.Sc. FADM, FADI, CAGS



Rodin™ Titan

Ceramic Nanohybrid

Rodin™ Titan is Pac-Dent's latest ceramic nanohybrid resin designed for printing long-term full arch restorations and provisional hybrid dentures. Rodin™ Titan preserves the core composition of Rodin™ Sculpture – a class II ceramic nanohybrid with analogous ceramic filler content, but now features a substantially increased flexibility for enhanced impact strength.

Benefits & Features



Improved Flexibility



High Impact Strength



Improved Aesthetics



Optimal Durability and Toughness



Vita Classic Shade System Matching



Lifelike Incisal Translucency



FDA 510K/Health Canada/TGA Cleared

APPLICATIONS



All on X



Denture Teeth



Veneers

Rodin Titan

- Recommended for Flexibility
- For high impact prosthetic indications: (All on Xs, screw retained dentures, full arch denture teeth)
- Improved Flexibility: Rodin™ Titan features a significantly reduced flexural modulus, providing exceptionally high impact strength
- Rodin Titan features analogous ceramic filler content to Rodin Sculpture
- Class II Ceramic Nanohybrid

Rodin Sculpture

- Recommended for Aesthetics
- For single crowns, inlays, onlays, and veneers, denture tooth arches, all-on-x provisionals
- Rodin™ Sculpture features a Biaxial Flexural Strength of 175 MPa, and a Flexural Modulus of 8800
- Rodin Sculpture consists of over 50% ceramic filler content
- Class II Ceramic Nanohybrid

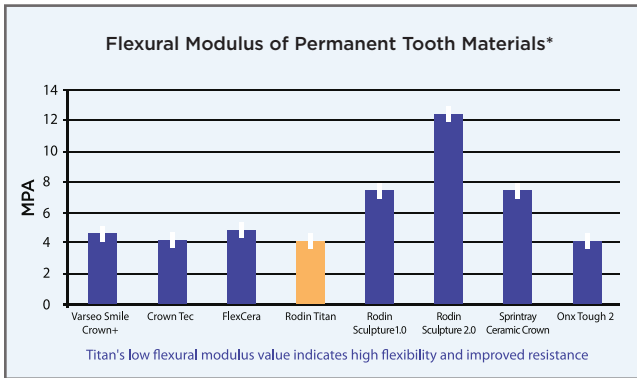
Rodin Sculpture 2.0

- Recommended for Strength
- For temporary and permanent fixed restorations
- Improved Strength: Rodin™ Sculpture 2.0 boasts an impressive Biaxial Flexural Strength of 200 MPa
- Sculpture 2.0 now consists of over 60% ceramic filler content, providing a substantial increase in strength and superior X-ray radiopacity
- Class II Zirconia-Infused Ceramic Nanohybrid



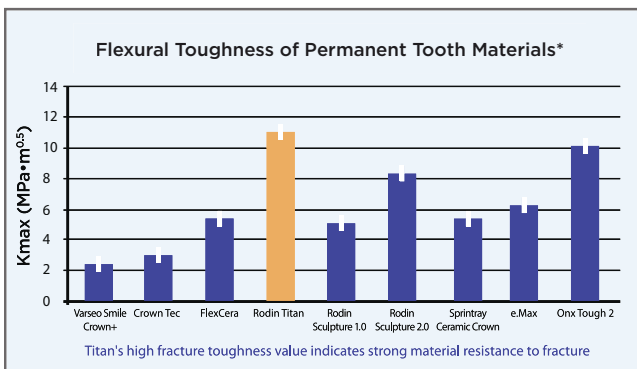
Rodin™ Titan

Ceramic Nanohybrid



“Congratulations to Pac-Dent for their continuous innovation. Rodin Titan's dynamic flexural modulus provides the flexibility needed for printing screw retained prostheses and removable indications. I endorse Titan and the remarkable benefits it presents to clinicians and patients alike.

- Dr. Rick Ferguson DMD,DABOI/ID,DICOI



*Third party validation data provided by Dr. Russell Giordano of Boston University

ORDER INFORMATION			
Shades	1.2 Kg Bottle	600 g Bottle	300 g Bottle
OM1	24003	24004	24005
OM3	23985	23991	23997
A1	23987	23993	23999
A2	23988	23994	24000
A3	23989	23995	24001
B1	23986	23992	23998
C2	23990	23996	24002

Rodin Titan boasts greater flexibility than its other ceramic nanohybrid counterparts.

This lower flexural modulus value indicates that the material is more flexible, improving the fracture resistance of the printed restoration. Titan's higher fracture toughness makes it the ideal choice for high impact prosthetic indications.





Rodin™ Sculpture

Ceramic Nanohybrid Resin



Rodin™ Sculpture is indicated for the printing of single crowns, inlays, onlays and veneers. This innovative ceramic nanohybrid is a FDA 510k cleared Class II medical device that fulfills all the necessary regulatory requirements for temporary and permanent restorations.

Benefits & Features



Qualifies for select ADA reimbursement codes



Unmatched Strength



Unrivaled Radiopacity



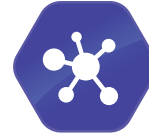
Optimal Durability and Toughness



Vita Classic Shade System Matching



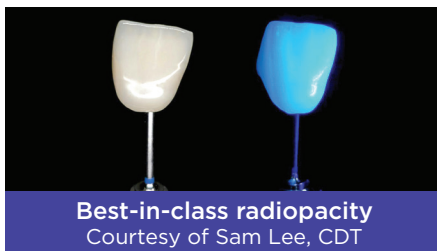
Lifelike Incisal Translucency



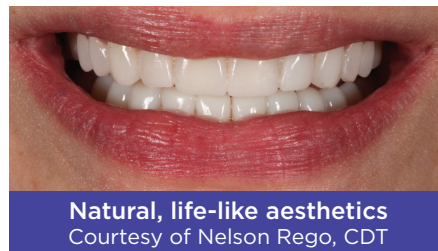
FDA 510K/Health Canada/TGA Cleared



Available in 18 Shades



Best-in-class radiopacity
Courtesy of Sam Lee, CDT



Natural, life-like aesthetics
Courtesy of Nelson Rego, CDT



Accurate shade matching
Courtesy of Rick Ferguson, DMD

“

An onlay printed from Rodin Sculpture is much stronger than a direct composite restoration. It still has the ability to flex to accommodate the bite, but it is strong enough to not chip or crack like direct restorations often do.

- Dr. Chonway Tram





Rodin™ Sculpture

Ceramic Nanohybrid Resin

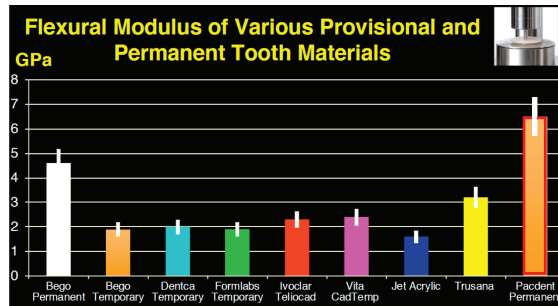
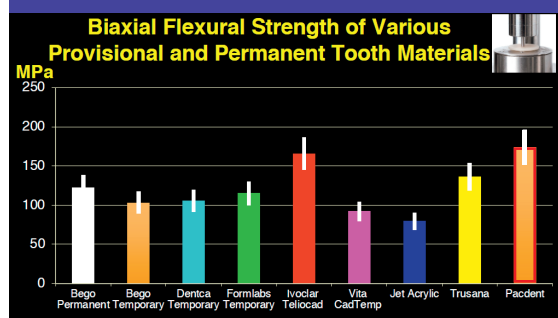
The high concentration of true ceramic fillers in Rodin™ Sculpture provides impressive radiopacity and fracture resistance when compared to other printed restorations. Rodin™ Sculpture is available to order in 18 shades, corresponding with the Vita classic shade guide system, as well as three distinct size configurations.



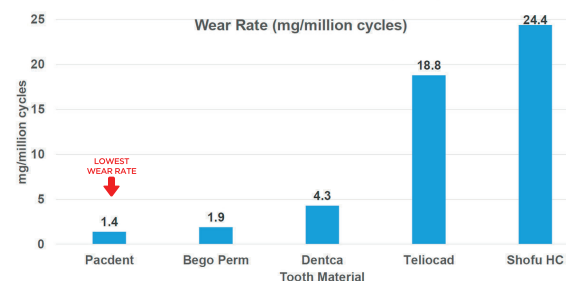
I am no longer milling long-term provisionals as I print them all with Rodin™ Sculpture!

- Lee Culp, CDT

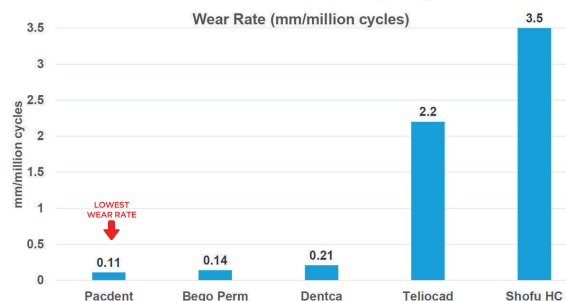
Technical Data



Wear Rate of Tooth Materials by Weight Loss



Wear Rate of Tooth Materials by Height Loss



*Data Provided by Dr. Russell Giordano of Boston University

Order Information

Shades	1.2 kg Bottle	600 g Bottle	300 g Bottle
BLEACH	3DR-CNR-BL-1200	3DR-CNR-BL-600	3DR-CNR-BL-300
OM1	3DR-CNR-M1-1200	3DR-CNR-M1-600	3DR-CNR-M1-300
A1	3DR-CNR-A1-1200	3DR-CNR-A1-600	3DR-CNR-A1-300
A2	3DR-CNR-A2-1200	3DR-CNR-A2-600	3DR-CNR-A2-300
A3	3DR-CNR-A3-1200	3DR-CNR-A3-600	3DR-CNR-A3-300
A3.5	3DR-CNR-A3.5-1200	3DR-CNR-A3.5-600	3DR-CNR-A3.5-300
A4	3DR-CNR-A4-1200	3DR-CNR-A4-600	3DR-CNR-A4-300
B1	3DR-CNR-B1-1200	3DR-CNR-B1-600	3DR-CNR-B1-300
B2	3DR-CNR-B2-1200	3DR-CNR-B2-600	3DR-CNR-B2-300
B3	3DR-CNR-B3-1200	3DR-CNR-B3-600	3DR-CNR-B3-300
B4	3DR-CNR-B4-1200	3DR-CNR-B4-600	3DR-CNR-B4-300
C1	3DR-CNR-C1-1200	3DR-CNR-C1-600	3DR-CNR-C1-300
C2	3DR-CNR-C2-1200	3DR-CNR-C2-600	3DR-CNR-C2-300
C3	3DR-CNR-C3-1200	3DR-CNR-C3-600	3DR-CNR-C3-300
C4	3DR-CNR-C4-1200	3DR-CNR-C4-600	3DR-CNR-C4-300
D2	3DR-CNR-D2-1200	3DR-CNR-D2-600	3DR-CNR-D2-300
D3	3DR-CNR-D3-1200	3DR-CNR-D3-600	3DR-CNR-D3-300
D4	3DR-CNR-D4-1200	3DR-CNR-D4-600	3DR-CNR-D4-300



Now Available in
16 Vita® Classical Shades &
2 Bleach Shades

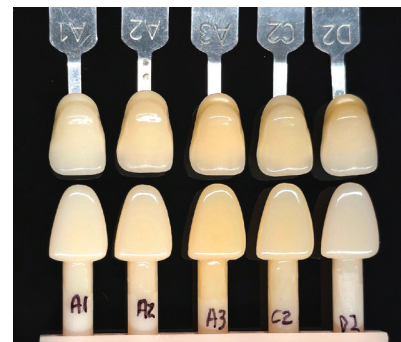
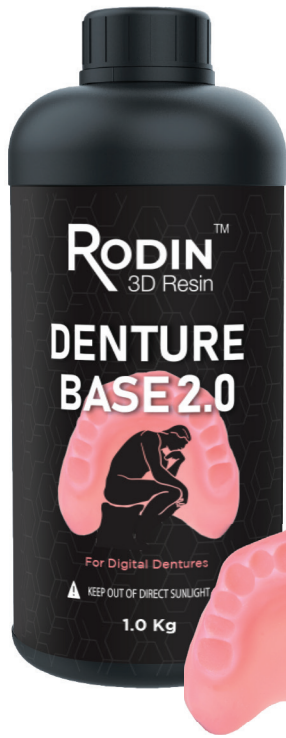


Image provided by Sam Lee, CDT



Rodin™ Denture Base 2.0

Denture Base Resin

Rodin™ Denture Base 2.0 is a biocompatible Class II material that is revolutionizing the creation of denture bases. With its improved flexibility, stability, and a diverse range of gingival shades, this advanced formula offers a new standard in denture fabrication, combining durability, aesthetics, and patient comfort.

Benefits & Features



High Impact Strength



Highest Fracture & Wear Resistance



Stunning Aesthetics



Outstanding Durability



Expanded Shade Options

Original Pink



23860

Classic Pink



23864

Light Pink



23862

Meharry



23861

Technical Data

	Pac-Dent
Viscosity 23C (cps)	1300 - 2400 cPa
Shore Hardness ASTM D2240	≥ 95 Shore D
Flex Strength MPa (SD) ISO 20795-1	114 - 130 MPa
Flexural Modulus (MPa)	2063 - 2826 MPa



High translucency on Denture Base & Sculpture.
Courtesy of Lee Culp, CDT, Sculpture Studios



Pink shade mimics gingiva tissue
Courtesy of Daniel Nowak, CDT

Order Information

23860 Rodin™ Denture Base 2.0 | Original Pink, 1 kg/Bottle

23864 Rodin™ Denture Base 2.0 | Classic Pink, 1 kg/Bottle

23862 Rodin™ Denture Base 2.0 | Light Pink, 1 kg/Bottle

23861 Rodin™ Denture Base 2.0 | Meharry, 1 kg/Bottle



Rodin™ Splint 2.0

Clear Bite Splint Resin

Rodin™ Splint is at the forefront of dental resin technology, offering unmatched stability, strength, and wear resistance. Precisely engineered for 3D printing of dental splints, night guards, retainers, and snoring devices, this resin is the ideal choice for patients experiencing severe bruxism, night grinding, or snoring issues. Its superior physical properties ensure both effectiveness and longevity.

Technical Data

	Pac-Dent
Flex Strength MPa (SD) ISO 20795-1	80 - 90 MPa
Flexural Modulus (MPa)	3527 - 4228 MPa

Benefits & Features



Unmatched
Strength



Highest Fracture
& Wear Resistance



Optically
Transparent



ADA Code D9944
& D9946 Insurance
Qualified

Order Information

23865 Rodin™ Splint 2.0, 1kg/Bottle
Rodin™ FlexiSplint Soft coming soon



Rodin™ Surgical Guide 2.0

Surgical Guide Resin

Rodin™ Surgical Guide 2.0 is a breakthrough in the field of dental surgical guides, offering unmatched flexural strength and durability. Specifically engineered for printing both full-arch and quadrant surgical guides, this high-performance resin is designed to withstand the rigors of surgical procedures, ensuring maximum shatter resistance and maintaining dimensional stability even under high temperatures.

Technical Data

	Pac-Dent
Flex Strength MPa (SD) ISO 20795-1	120 - 800 MPa
Flexural Modulus (MPa)	2038 - 2716 MPa

Benefits & Features



Maximum
Shatter
Resistance



Dimensional
Stability for
Autoclaving



Optimized
Visibility



Distinct
Coloration

Order Information

23867 Rodin™ Surgical Guide 2.0, 1kg/Bottle



Rodin™ Try-In Denture Try-In Resin

Rodin™ Try-In is an ideal, low-cost solution intended for producing Try-In denture models prior to printing the final denture base and teeth.

Technical Data

	Pac-Dent
Flex Strength MPa (SD) ISO 20795-1	76 MPa
Flexural Modulus (MPa)	6407 MPa

Benefits & Features



Distinct
off-white shade



Simple
verification



Reduces
waste

Order Information

3DR-TIF Rodin™ Try-In Resin, 1kg/Bottle



Rodin™ All-Purpose Glaze Light-Curable Naturalizing Resin

Rodin™ All-Purpose Glaze is a biocompatible, Class II, light-curable resin meticulously designed for external surface characterization of various dental materials such as prefabricated teeth and denture base resins. This versatile glaze is suitable for both direct and indirect dental restorations made from hybrid ceramic, PMMA, and acrylic-based dental composite materials. Furthermore, Rodin™ All-Purpose Glaze enhances the translucent optical effect of 3D printed materials which can be used with a wide range of applications.

- Enhances characterization for a wide range of dental applications, including crowns, bridges, inlays, onlays, veneers, dentures, and all-on-x provisionals.
- Enhances translucency for 3D printed corrective oral appliances and implant positioning surgical guides.
- Seals and repairs micro-fractures resulting from support removal and finishing processes.
- Exhibits low water sorption and resistance to discoloration, ensuring durability.
- Requires a Nitrogen Based Curing System for optimal results.



Before

After

Order Information

3DR-GLZ-15 Rodin™ Glaze, 15 g Bottle

3DR-GLZ-60 Rodin™ Glaze, 60 g Bottle



Rodin™ Palette

Naturalizing Kit



Image provided by Andrew Priddy, CDT



Image provided by Archibald Digital



Introducing Rodin™ Palette Naturalizing Kit by Pac-Dent, an innovative light-curable staining system that uses advanced nano-technology chemistry inspired by Rodin Sculpture to guarantee a delamination-free bond. Offered in a wide range of colors and shades, Rodin Palette provides users with tools to replicate natural tooth and gingiva features. Enhancing both visual appeal and durability, it's ideal for long-term provisional and permanent 3D-printed restorations.

- Comprehensive color selection empowers users to precisely characterize and color match restorations and provisional appliances with stunning accuracy.
- Provides best-in-class wear resistance, ensuring long-lasting performance.
- Indicated for use with indirect and direct composite restorations and provisionals comprised of ceramic resin.
- Requires a Nitrogen Based Curing System for optimal results.

Order Information

3DR-PLT-KIT

Rodin™ Palette Intro Kit:

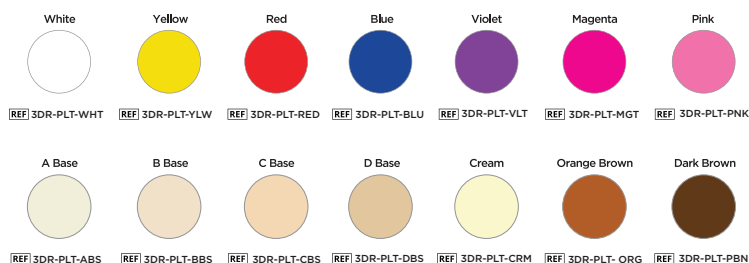
- 14x Pre-Filled 1 ml Syringes
- 1x Rodin™ Glaze 60g Bottle
- 1x Mixing Well

Applicators:

- 100x Standard Micro Pro™
- 100x Tapered Micro Pro™
- 100x Ultra-Fine Micro Pro™

PALETTE

Naturalizing Kit Refills



“

Rodin Palette has working characteristics unlike anything I've encountered and is a serious addition to any 3D line. Material control is key to some stunning effects with this product.

– Andrew Priddy, CDT



Rodin™ Palette Refill Kit



RODIN™ BOND

Dental Adhesive System

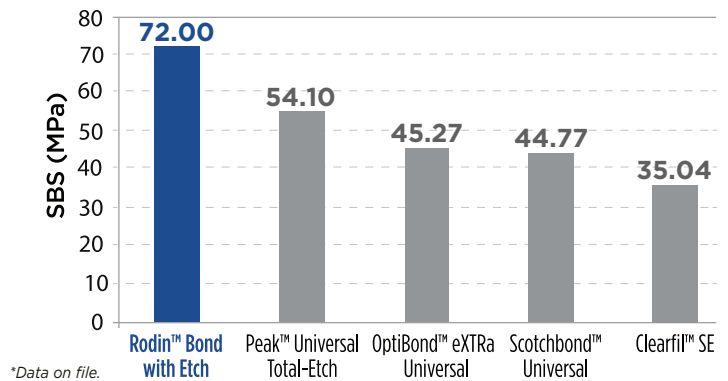
THE FIRST UNIVERSAL BONDING AGENT

DESIGN FOR 3D PRINTED RESTORATIONS



ALSO DELIVERS

- Highest Shear Bond Strength for conventional zirconia and composite restorations
- Maximum adhesive strength when coupled with SensiGuard desensitizer, ensuring patient comfort



Data from an Independent Research Institute*



Rodin™ Bond & SensiGuard

471101 Rodin Bond Adhesive Bottle Kit

- 1x Rodin Bond Adhesive 5mL
- 1x SensiGuard™ Desensitizer 5mL
- 2x Rodin™ ETCHPRO™ 1.5 gm Syringes
- 20x Dispensing Tips for Rodin™ ETCHPRO™
- 100x MicroPro Brushes
- 20x Mixing Wells
- 1x Technique Guide
- 1x Instruction for Use

471102 Rodin™ Bond 5 mL Bottle Refill

471103 Rodin™ Bond 100x 0.1 mL Unit Doses

481101 SensiGuard Desensitizer 5 mL Bottle Refill

481102 Rodin™ Bond Unit Dose Kit 50x Rodin 0.1 mL Unit Doses 50x SensiGuard 0.1 mL Doses

481103 SensiGuard™ Desensitizer 100x 0.1 mL Unit Doses



STEP 1

Etch enamel and dentin with Rodin™ ETCHPRO™



STEP 2

Apply SensiGuard™ 2-in-1 desensitizer and primer



STEP 3

Apply Rodin™ Bond Adhesive



STEP 4

Select appropriate shade of Rodin™ Luting Cement



STEP 5

Place printed Rodin™ Sculpture crown



STEP 6

Light Cure Surface



Rodin™ Resin Applications

Denture Teeth



Rodin™ Titan
or Rodin™ Sculpture

Crowns & Bridges



Rodin™ Sculpture 2.0 or
Rodin™ Sculpture

All-on-Xs



Rodin™ Titan
or Rodin™ Sculpture

Inlays & Onlays



Rodin™ Sculpture 2.0 or
Rodin™ Sculpture

Veneers



Rodin™ Titan or Rodin™ Sculpture

Full & Partial Denture Bases



Rodin™ Denture Base 2.0

Night Guards & Splints



Rodin™ Splint 2.0

Surgical Guides



Rodin™ Surgical Guide 2.0

Bite Trays



Rodin™ Bite Tray

Dental Models



Rodin™ Model

Try-In Models




Rodin™ Try-In

Indirect Bonding Trays



Rodin™ Ortho IBT

Pac-Dent is dedicated to continuing expansion of the list of devices that are compatible with our Rodin™ 3D Resins. We believe in giving you freedom of choice when it comes to your preferred printing device. See below for our most up-to-date validation and verification status chart.

Validation Status	✓ Verified Compatibility				⌚ Scheduled Validation					● Incompatible				
Compatible Printers	 Rodin™ Sculpture 2.0	 Rodin™ Titan	 Rodin™ Sculpture Ceramic Nanohybrid	 Rodin™ Denture Base	 Rodin™ Denture Base 2.0	 Rodin™ Splint 2.0	 Rodin™ Clear Bite Splint	 Rodin™ Custom Bite Tray	 Rodin™ Surgical Guide 2.0	 Rodin™ Surgical Guide	 Rodin™ Try-In Denture	 Rodin™ Ortho IBT	 Rodin™ Model	 Rodin™ Castable
 Ackuretta SOL	✓	✓	✓	✓	✓	✓	✓	✓	✓	✓	✓	✓	✓	●
 Asiga® MAX (385 nm)	✓	✓	✓	✓	✓	✓	✓	✓	✓	✓	✓	✓	✓	✓
 Asiga® Pico 2 (385 nm)	✓	✓	✓	✓	✓	✓	✓	✓	✓	✓	✓	✓	✓	✓
 Asiga® Pro 4K (385 nm)	✓	✓	✓	✓	✓	✓	✓	✓	✓	✓	✓	✓	✓	✓
 Carbon® 3D (M1, M2, M3)	⌚	⌚	✓	⌚	⌚	⌚	⌚	✓	⌚	⌚	⌚	⌚	⌚	⌚
 Flashforge® Focus 6k	✓	✓	✓	✓	✓	✓	✓	✓	✓	✓	✓	✓	✓	●
 Nexa Xip	⌚	⌚	✓	⌚	✓	✓	⌚	⌚	✓	⌚	⌚	⌚	✓	⌚
 Phrozen® Sonic Mini 4k	✓	✓	✓	●	✓	✓	●	✓	✓	●	✓	✓	✓	●
 Sonic Mini 8K	✓	✓	✓	⌚	✓	✓	✓	⌚	✓	⌚	✓	⌚	✓	⌚
 Sonic Mini 8Ks	✓	✓	✓	⌚	⌚	⌚	⌚	⌚	⌚	✓	⌚	⌚	✓	⌚
 Phrozen® Sonic 4k	✓	✓	✓	●	✓	✓	●	✓	✓	●	✓	✓	✓	●
 Phrozen® Sonic 4k XL	⌚	⌚	✓	●	✓	✓	●	✓	✓	●	✓	✓	✓	●
 RayShape Shape 1+Dental	✓	✓	✓	✓	✓	✓	✓	✓	✓	✓	✓	✓	✓	⌚
 RayShape Edge E1	✓	✓	✓	✓	✓	✓	✓	✓	✓	✓	✓	✓	✓	⌚
 Shining 3D L4D/L4K	✓	✓	✓	✓	✓	✓	✓	⌚	✓	✓	✓	✓	✓	✓
 Shining 3D D1s	✓	✓	✓	⌚	✓	✓	✓	⌚	✓	⌚	⌚	⌚	⌚	⌚
 Whip Mix VeriEKO	⌚	⌚	✓	✓	⌚	⌚	⌚	⌚	⌚	⌚	⌚	⌚	⌚	⌚

COMPATIBLE LIGHT CURING DEVICES

Validation Status	✓ Verified Compatibility													
Compatible Devices														
 Dreve PCU LED N2	✓	✓	✓	✓	✓	✓	✓	✓	✓	✓	✓	✓	✓	✓
 Ackuretta Curie Plus	✓	✓	✓	✓	✓	✓	✓	✓	✓	✓	✓	✓	✓	✓
 Ackuretta Curie	✓	✓	✓	✓	✓	✓	✓	✓	✓	✓	✓	✓	✓	✓
 Formlabs® Form Cure	✓	✓	✓	✓	✓	✓	✓	✓	✓	✓	✓	✓	✓	✓
 Otoflash	✓	✓	✓	✓	✓	✓	✓	✓	✓	✓	✓	✓	✓	✓
For Best Aesthetics and Mechanical Properties														
MOST RECOMMENDED														



Rodin™ Bite-Tray
for printing custom bite
and impression trays

Order Information

3DR-TRAYF
Custom Bite Tray Resin, 1 kg



Rodin™ Model
for printing removable
die and solid models

Order Information

3DR-TANF
Model Resin, 1kg



Rodin™ Ortho IBT
for printing custom
orthodontic bracket
placement guides

Order Information

3DR-OIBTF
Indirect Bonding Tray Resin, 1kg



Rodin™ Castable
for printing lost cast
waxing technique patterns

Order Information

3DR-CASTF
Castable Resin, 1kg

Featured Gallery



Dr. Rick Ferguson
DMD,DABOI/ID,DICOI



Lee Culp
CDT, CEO of Sculpture Studios



Eugene Royzengurt
LD, BSc, Apple Dental Laboratory



Andrew Priddy
CDT, C2C Dental Lab



Our Distributors

				and more!