

# NEW PRODUCTS CATALOG 2024



Learn More



# Restorative

## Rodin™ Bond

Total-Etch Dental Adhesive

Rodin Bond is a cutting-edge light-cured dental adhesive for both direct and indirect bonding applications. The incorporation of advanced glass filler technology reinforces the hybrid zone and penetrates dentin tubules, ensuring exceptional bond strength compared to traditional unfilled adhesives. Pair Rodin Bond with SensiGuard for significantly improved shear bond strength and adhesion to both direct and indirect surfaces. Features a cutting-edge flip-top cap design, enabling accurate “one-drop” adhesive dispensing with a single hand and “trophy” unit dose delivery system.

**Compared to Kerr OptiBond™ Solo Plus, 3M™ Scotchbond™ Universal Plus**

- Best-In-Class Adhesion - Nano-hybrid glass filler technology provides incredible bond strength and reliable adhesion to most dental materials
- Full Compatibility - Can be used with light-cured, self-cured, and dual-cured composite materials on direct and indirect restorations
- Complete Solution - Combine Rodin Bond and SensiGuard for a comprehensive bonding solution that not only enhances bonding but safeguards against postoperative sensitivity



## SensiGuard™

Desensitizer and Primer

SensiGuard, is a groundbreaking antibacterial desensitizer that seals dentin tubules to prevent postoperative sensitivity and significantly reduces the risk of caries formation beneath restorations. In addition to these desensitizing qualities, SensiGuard significantly enhances bond strength through the rewetting of collagen fibers in the dentin. When combined with a dental adhesive such as Rodin Bond, SensiGuard acts as both a desensitizer and a primer.

**Compared to Zest Dental MicroPrime™, Kulzer Gluma®**

- Patient Comfort - Significant reduction of post-operation sensitivity in patients
- Visibility- Distinct yellow tint provides unparalleled visibility during procedures
- Anti-Bacterial - Potent antibacterial qualities reduce the chance of caries formation beneath restorations
- Universal Compatibility - Seamless Integration with a wide range of dental adhesives and workflows



## Rodin™ InteCem

Intermediate Restorative Material

NEW

Rodin™ InteCem is indicated for intermediate restorations intended to remain in place for up to one year. Composed of polymer-reinforced zinc oxide-eugenol, it uses the sedative like properties of eugenol to relieve hypersensitive tooth pulp, and functions as a proper thermal insulator. Serves as an ideal base under resin-free cements and restorative materials including amalgam, inlays, and onlays.

**Compared to Dentsply IRM®**

- Provides sedative-like properties for hypersensitive tooth pulp.
- High strength and abrasion resistance with low solubility.



## Rodin™ Universal Luting Cement **NEW**

Dual Cure Resin Cement

Rodin Luting Cement is a 1:1 universal dual-cure cement engineered for use with direct and indirect restorations. This versatile resin-modified glass ionomer cement redefines simplicity and performance in restorative dentistry, offering unparalleled self-adhesion with enhanced potential when combined with bonding agents such as Pac-Dent's Rodin Bond.

### **Compared to Kerr NX3 Luting Cement**

- Stability - Unique color-stable formula allows for restorations to be placed throughout the mouth.
- Exceptional Strength - Best-in class bond strength and moisture resistance.
- Compatibility: Compatible with a variety of ceramics, PFMS, dental metals, and CAD CAM materials such as Rodin 3D Resins.



## Rodin™ Silane Primer **NEW**

Dental Adhesive Priming Agent

Pac-Dent's Rodin Silane Primer, is a meticulously engineered single-component solution designed to elevate the bond strength of composites and resin cements. By carefully preparing the surface for adhesion, Rodin Silane Primer fosters initial bonds with the cement before restoration placement, ensuring a successful repair while enhancing long-term bond strength and wear resistance.

### **Compared to Kerr's Nexus 2 Silane Primer**

- Compatibility - Rodin Silane Primer is compatible with both self-etch and total-etch bonding agents.
- Adhesion Promotion- Effectively promotes adhesion between resin composites and silica-based or silica-coated indirect restorative materials.
- Precision - Specialized packaging design allows for precise "one-drop" delivery of primer.



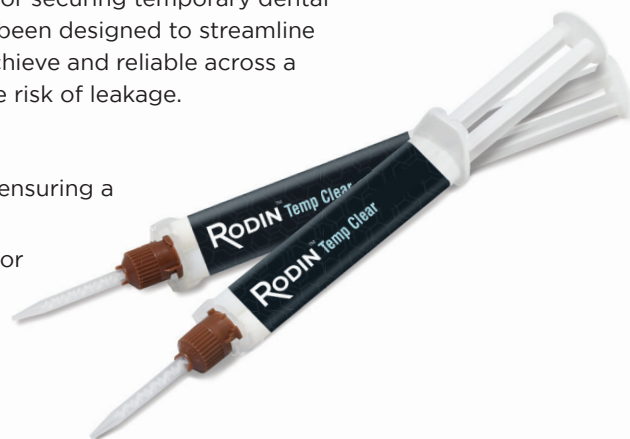
## Rodin™ TempClear **NEW**

Temporary Cement

Rodin TempClear is a premium temporary dental cement developed for securing temporary dental restorations such as crowns and bridges. Its unique composition has been designed to streamline the placement process, ensuring a secure hold that is both easy to achieve and reliable across a range of applications. Provides high bond strength while reducing the risk of leakage.

### **Compared to Kerr Temp-Bond™**

- Streamlined Placement - Distinct composition for easy placement, ensuring a secure hold for various temporary dental applications.
- Ideal Consistency - Ensures strong adhesion and easy removal for for transitioning to permanent restorations.
- Tailored for 3D Printing - Ideal match for temporary crowns and bridges crafted from advanced 3D resin materials.
- Versatility - Can be effectively used as a liner or base under ceramic restorations.



## Rodin™ Porcelain Etch

NEW

Porcelain Etching Gel

Pac-Dent's new 9.6% buffered Hydrofluoric Acid Rodin Porcelain Etch Gel features an ideal thixotropic design that allows for precise placement and excellent control. A one-minute application creates an ideal etch on porcelain crowns, inlays, onlays, bridges, veneers, and fractured porcelain surfaces to maximize bond strength. Pac-Dent's superior formula ensures the porcelain etch gel will not stain porcelain, composites, or resin-based cements.

*Compared to Pulpdent® Porcelain Etch Gel, Ultradent™ Porcelain Etch*

- One-minute application
- Buffered acid minimizes irritation
- High visibility yellow gel
- Thixotropic – stays where it's placed
- Easy to rinse off



## Rodin™ OptiComp

NEW

Universal Nanohybrid Composite

Rodin OptiComp Nanohybrid composite is formulated with a combination of inorganic and organic fillers. These materials are designed to provide excellent handling properties, high polishability, and good esthetics. Indicated for a variety of dental applications, including filling cavities and restoring teeth.

Pac-Dent's Nanohybrid Dental Composite specially designed to offer optimal handling and ease of placement, as well as long-lasting polishability and high wear resistance. It is intended to provide lifelike esthetics and a lasting appearance for dental restorations, making them indistinguishable from natural teeth.



## Rodin™ Optiflow

NEW

Flowable Composites, LC

Rodin OptiFlow is a visible light cure resin-based flowable restorative dental composite suitable for class III, class IV and class V restorations. Additional functions include repair of enamel defects, repair of porcelain restorations, minor occlusal build-ups in non-stress bearing areas, pit and fissure sealant, cement for ceramic/composite veneers, incisal abrasions and core build-ups.

- Optimized viscosity allows for precise placement
- Increased polymerization shrinkage
- Holds shape while filling cavities



## iMatrix™ Clear NEW

### Sectional Matrix System

The iMatrix Clear system features clear Mylar matrices and clear interproximal wedges that allow ample light to pass through for complete cure-through restorations. The color-coded, clear Mylar matrices leave the composite with a more polished and contoured finish than traditional stainless steel matrices, while having a more pronounced marginal ridge for a correct anatomical form. It features a three-step polishing kit for the processing of composite restorations.

**Compared to Bioclear Evolve Matrix and 360° Veneer Matrix Series, Garrison Composi-Tight®**

- Clear, color coded Mylar matrices for uniform restorations curing with ideal marginal ridge.
- Easy to place clear wedges that stay in place while providing a superior gingival seal.
- 2 clear rings that provide optimal tooth separation with undercut design for greater visibility and improved handling.



## iMatrix™-Disposable NEW

### Disposable Matrix Bands

The iMatrix-Disposable is a single-use, pre-assembled disposable matrix and retainer system designed for both composite and amalgam restorations of every class. The iMatrix-Disposable features a compact and easy-to-place matrix band that is easily adjustable for any quadrant or angle with a twisting handle to maximize patient comfort and quick-release locking system for fast removal. The ultra-thin matrix bands are available in a V or pre-contoured shape to adapt to all tooth contours, allowing for a tight seal in any restoration.

**Compared to Ultradent's Omni-Matrix™, Medicom SafeMatrix™**

- Convenient, time-saving disposable system
- Compact size for increased comfort and visibility
- Easily adjustable and quick-release locking system



(Patent Pending)

Universal	Universal	Curved	Curved	Universal
Wide Band	Narrow Band	Wide Band	Narrow Band	Wide Band
6 mm	4.5 mm	6 mm	4.5 mm	6 mm
Stainless Steel	Stainless Steel	Stainless Steel	Stainless Steel	Mylar

## iMatrix™ Coated NEW

**Compared to Triodont® SuperCurve Matrix, Dentsply Palodent Plus EZ-Coat, Garrison Composi-Tight® 3D Fusion™**

- Ultra-thin, non-stick coating allows quick and easy removal
- Lifelike curvature design and pronounced marginal ridge for improved anatomical precision.
- Color-coded for instant size identification.
- Gingival apron is specially shaped to match commonly shaped cavities





# Restorative

## iMatrix™ Clear Polishing Kit **NEW**

- Allows for fast and easy composite adjustments without polishing paste
- Provides ideal smooth and polished occlusal surface
- Eliminates restoration abrasiveness and opposing dentition
- Reusable, 3-step polishing system
- Latex-free



## iGlo™

### Silicone Polishers

The iGlo Silicone Polisher Kit provides a comprehensive set of tools for finishing and polishing, resulting in smooth, plaque-resistant restorations with lifelike and natural aesthetics. Using silicon points, cups, and discs, this innovative polishing kit achieves precise finishing and polishing of composites and various dental surfaces. Latex-free.

#### **Compared to Dentsply® Enhance® and PoGo®**

- Provides significant reduction of surface roughness and bacterial retention.
- Discs provide exceptional coverage, ensuring no detail is overlooked during the finishing and polishing process.
- Reinforced mandrel delivers optimal concentric torque, for precision and control.



## iFlo™

### Delivery Tips



#### **iFlo™ Spiral Brush** **NEW**

##### **Compared to Vista Spira-Flow™ and Ultradent Inspiral® Brush Tips**

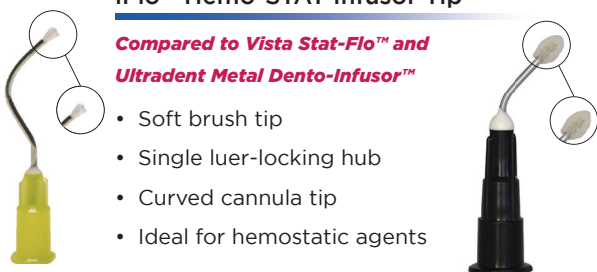
- Soft brush tip
- Single luer-locking hub
- Curved cannula tip
- Soft brush tip



#### **iFlo™ EZVisc Tip**

##### **Compared to Ultradent Black Mini® Tip**

- Available with brush tip
- Single luer-locking hub
- Curved cannula tip
- Ideal for viscous materials



#### **iFlo™ Hemo-STAT Infusor Tip**

##### **Compared to Vista Stat-Flo™ and Ultradent Metal Dento-Infusor™**

- Soft brush tip
- Single luer-locking hub
- Curved cannula tip
- Ideal for hemostatic agents

#### **iFlo™ MicroEZ Tip**

##### **Compared to Ultradent Black Micro™ FX™ Tips**

- Stand-out fiber tip
- Single luer-locking hub
- Curved cannula tip
- Ideal for PacSeal™ pit & fissure sealant



#### **iFlo™ Capillary Tip** **NEW**

##### **Compared to Ultradent Capillary Tips**

- Narrow and flexible tip
- Minimizes need for paper points
- Double Luer-Locking hub
- Available with 45° angle tipsealant

## Rodin™ Titan

NEW

Ceramic Nanohybrid Resin

Introducing Rodin™ Titan, Pac-Dent's latest ceramic nanohybrid resin designed for printing long-term full arch restorations and provisional hybrid dentures. Rodin™ Titan preserves the core composition of Rodin™ Sculpture – a class II ceramic nanohybrid with analogous ceramic filler content, but now features a substantial increase in flexibility for enhanced impact strength.

- Significantly reduced flexural modulus
- Provides high impact strength
- Ideal for split-file denture designs, full monolithic dentures, immediate screw-retained dentures



## Rodin™ Sculpture 2.0

NEW

Zirconia Nanohybrid Resin

Rodin™ Sculpture 2.0 is the next monumental evolution of Pac-Dent's crown and bridge material. This zirconia-infused nanohybrid has been engineered to transcend the standards of permanent dental restorations. This next-generation resin achieves previously unseen levels of flexural strength and ceramic filler content, redefining what can be achieved through 3D printed restorations.

- Improved Strength: Rodin Sculpture 2.0 boasts an impressive Biaxial Flexural Strength of 200 Mpa, offering superior wear and fracture resistance for enduring long-term solutions.
- Improved Ceramic Filler Content: Sculpture 2.0 now consists of over 60% ceramic filler content, providing a substantial increase in strength and superior X-Ray radiopacity.
- Improved Aesthetics: Sculpture 2.0 is offered in 16 Vita Classic shades and 2 additional bleach shades, providing unprecedented customization options to craft each restoration to perfection.

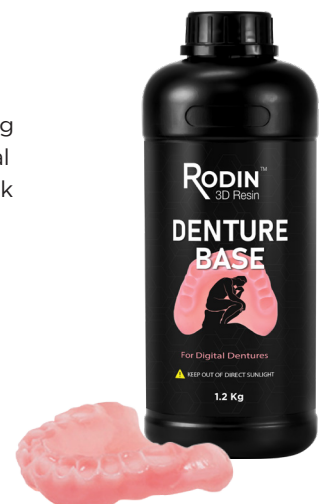


## Rodin™ Denture Base

Biocompatible Denture Resin

Rodin Denture Base is designed to be used alongside Rodin Sculpture and is suitable for printing all types of denture bases. Maximizes high-impact durability to match performance of traditional denture acrylics, outperforming all other non-filled denture base resins that may otherwise break upon dropping.

- Features 3 new shades – Classic Pink, Light Pink, and Meharry
- High Impact-Strength
- High Fracture & Wear Resistance
- FDA 510K Cleared & Biocompatible



# 3D Resins

## Rodin™ FlexiSplint

Clear Bite Splint Resin

Introducing Rodin FlexiSplint Soft, a groundbreaking dental splint resin that redefines standards for both patient comfort and appliance durability.

With its extraordinary softness, exceptional resistance to breakage, and impressive optical transparency, this material guarantees an outstanding fit while upholding aesthetic quality and prioritizing the comfort of the patient.



## Rodin™ Palette

Naturalizing Resin

Introducing Rodin Palette Naturalizing Kit by Pac-Dent, an innovative light-curable staining system that uses advanced nano-technology chemistry inspired by Rodin Sculpture to guarantee a delamination-free bond. Offered in a wide range of colors and shades, Rodin Palette provides users with tools to replicate natural tooth and gingiva features. Enhancing both visual appeal and durability, it's ideal for long-term provisional and permanent 3D-printed restorations.

- Comprehensive color selection empowers users to precisely characterize and color match restorations and provisional appliances with stunning accuracy.
- Provides best-in-class wear resistance, ensuring long-lasting performance.
- Indicated for use with indirect and direct composite restorations and provisionals comprised of ceramic resin.
- Requires a nitrogen-based curing system for optimal results.



## Rodin™ Sculptr™

NEW

Designed For Dental Practices & Labs

Rodin ProDLP and Rodin ProLCD have been engineered to meet the high speed and precision demands of Dental 3D printing, delivering high-quality results for a range of dental applications including: splints, dentures, surgical guides, and even permanent restorations. Rodin Sculptur printers are preconfigured with comprehensive print profiles for Pac-Dent's Rodin Resin lineup, streamlining the 3D printing process. Say goodbye to the complexities of calibration and intricate settings adjustments – users can now effortlessly set up the printer and dive right into their work without complications.

- User friendly touchscreen interface
- Allows for fast printing of full upper and lower arches
- Built with a high-precision linear guide for superior accuracy



Rodin ProDLP

Rodin ProLCD



## Improved AntiSplatr™

NEW

### Disposable Prophylaxis Angle

The improved AntiSplatr Disposable Prophylaxis Angle\*\* represents an important advancement in disposable prophylaxis angle technology. This innovative anti-splatter angle features cutting-edge technology aimed at enhancing the safety and efficiency of dental professionals. It reinforces your existing infection control protocols by actively mitigating the risk of cross-contamination from splatter.

The ingeniously designed splatter fender effectively eliminates saliva, blood, and prophylaxis paste accumulation from the cup's exterior, reducing splatter by up to 100%. The splatter fender's compact design and positioning ensures optimal reach and better visibility.

- Splatter fender removes accumulated paste and bodily fluids by up to 100%\*
- Helps protect against the risk of cross-contamination
- Spiral blades allow for optimum paste retention

\*Data on file



## AntiSplatr™ Wiper Brush

NEW

### Disposable Prophylaxis Angle

Pac-Dent's new AntiSplatr Wiper Brush disposable prophylaxis angle is the latest addition to the AntiSplatr family. The AntiSplatr Wiper Brush features an innovative wiper brush with flexible bristles that significantly reduce splatter during prophylaxis treatments by preventing prophylaxis paste and saliva accumulation on the prophylaxis cup. Includes an expertly design prophylaxis cup with a unique internal blade design and flare for optimal polishing performance that bolsters your infection control protocols.

- Significantly reduces splatter of bodily fluids
- Bolsters infection control protocols
- Advanced internal blades and flare for optimal cleaning
- Compact design for greater visibility and reach



## ProMate™ EZ-Q

NEW

### Low-Speed Handpiece

Pac-Dent introduces ProMate™ EZ-Q, a cutting-edge low-speed hygiene handpiece equipped with a quick-disconnect mechanism that significantly reduces preparation time between procedures. Enhancing efficiency, the ProMate™ EZ-Q boasts a complete 360-degree swivel head and wide compatibility with most prophylaxis angle brands. The stainless steel exterior and maintenance-reducing lube-free motor further ensure a streamlined procedure for hygienists.

Significant improvement in preparation time between patients



- Quick Disconnect Functionality - Significant improvement in preparation time between patients
- Maneuverability - Full Range of Motion with 360° Swivel Head
- Compatibility - Universal connector provides compatibility with most disposable prophylaxis angle brands
- Low-Maintenance - Lube Free Motor reduces need for constant maintenance

## ProPaste One™ NEW

Disposable Prophecy Ring and AntiSplatr Paste Combo

The ProPaste One is a 2 in 1, unique and economical, pre-assembled disposable prophylaxis ring and powerful paste combo for more efficient polishing, that bolsters infection control protocols. This pre-assembled combo eliminates the need to autoclave or sanitize a prophylaxis ring for the next patient, simply use and dispose. Each ring has an ideal amount of desensitizing and anti-splatter prophylaxis paste for each procedure. Ideal solution for all hygienists and is an asset for mobile hygienists.

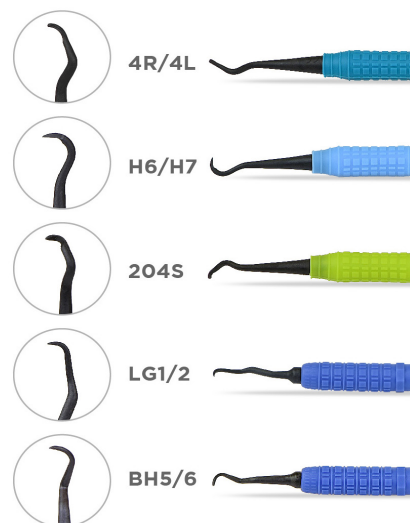
- Promotes dentin remineralization, aiding in oral health maintenance
- Desensitizing, easy to rinse-off, anti-splatter paste with 1.23% fluoride ion and Tri-Calcium Phosphate (TCP), that provides exceptional polishing and stain-removal
- Innovative single-use system reduces need for autoclaving and sanitization



## ImplaKlean™ Implant Scalers NEW

The ImplaKlean Implant Deplaquer and Scaler Set is designed to fulfill the requirements of dental implant maintenance. ImplaKlean scalers are made of high-performance autoclavable carbon reinforced resin. The unique resin material features ideal rigidity for convenient resharping, while avoiding scratching or damage of abutment surfaces. The handles are ergonomically designed with color-coded silicone grips for comfort and easy identification.

- Unique resin material does not scratch implant surfaces
- Resharpenable with conventional methods
- Comfortable color-coded silicone grips
- 5 types to satisfy different scaling needs



## Perio Armor™ NEW

1.7% HP Oral Cleansing Gel

Gingi-Pak's Perio Armor 1.7% hydrogen peroxide (HP) gel is a non-invasive periodontal tray therapy solution. Perio Armor with HP helps eliminate infection causing bacteria and intra-oral wounds commonly associated with periodontitis and gingivitis.

- Features 1.7% Hydrogen Peroxide Formula
- Non-invasive periodontal tray solution
- Helps protect against gum disease
- Helps eliminate harmful bacteria



Since 1955  
**GINGI-PAK®**

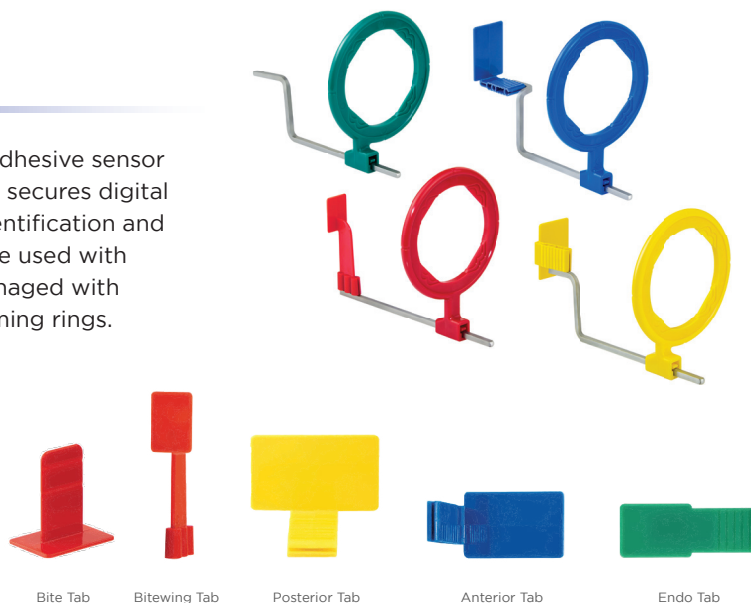
## EzAim™ X-Ray **NEW**

### Adhesive Positioning System

EzAim X-Ray Positioning System features disposable, self-adhesive sensor holders with peel-and-stick adhesive technology that firmly secures digital sensors to holders. The holders are color coded for easy identification and fits all types of sensors on the market. EzAim holders can be used with existing aiming rings and positioning arms. Tabs can be managed with hemostats. Available with matching positioning arm and aiming rings.

**Compared to Dentsply Rinn XCP, Xios Plus and add Schick AimRight**

- Single-use adhesive holder
- Color coded for easy identification
- Saves time and eliminates reprocessing
- Available for anterior, posterior, endo tab, and bite tab



## X-Ray Collimator **NEW**

The new X-ray Collimator effectively protects patients and staff from excessive x-ray radiation while improving radiograph quality, regardless of receptor speed. Compatible with film, phosphorus plates, and digital sensors.

- Reduces excess x-ray exposure
- Improve image quality



## Armor™ **NEW**

### Side Loading PSP Barrier Envelopes

Armor Barrier Envelopes features a Y-notch design that ensures the envelope tears open in a single direction to reduce contamination. The extra layer allows Phosphor Storage Plate (PSP) sensors to be easily reused. The black opaque back of the envelope blocks ambient light exposure, preventing image distortion.

**Compared to Air Techniques ScanX® Barrier Envelopes**

- Y-notch design reduces cross contamination
- Easy to open with quick sealing technology
- Black opaque material prevents image distortion
- Available in sizes 0, 1, 2, 3, and 4





# X-Ray Accessories

## Armor™ **NEW**

### Digital X-Ray Sensor Sheaths with Paper Backing

These specially designed sheaths with paper-backing are custom fitted for each digital X-ray sensor type to ensure maximum patient comfort and ease of use. The sheaths' films are made of a specially formulated, high quality blend of resins that are durable and scratch-resistant, protecting your investment.

#### **Compared to TIDI® Sleeves**

- Custom-fitted sleeve for precise and easy placement for popular sensor models
- Made of soft plastic with no sharp edges for maximum patient comfort
- Convenient paper-backing design ensures easy insertion of sensor



## Armor™ **NEW**

### Universal Sensor Sleeves

Armor Universal sheaths' films are made of a specially formulated, high quality blend of resins that are durable and scratch-resistant, protecting your investment. Designed with soft plastic and round edges for maximum patient comfort.

- Provides extra infection control protection and protects your investment
- Universal design to fit the most popular digital x-ray sensor models
- Soft plastic and rounded edges for maximum patient comfort



## EasyProp™ **NEW**

### Disposable Mouth Props

EasyProp™ Disposable Mouth Props feature a unique non-elastic and firm Styrofoam composition that is gentle on patients but strong enough to avoid deformation.

EasyProp™ Disposable Mouth Props helps patients hold the desired angle, without worrying about movement or angle disruption. The integrated hole design allows technicians to thread a strand of dental floss when needed.

#### **Compare to EZ-Prop®**

- Firm and non-elastic Styrofoam composition for strength and comfort
- Helps patients hold desired angle for extended procedures
- Integrated hole for easy dental floss threading



## PropBlock™

NEW

### Disposable Bite Blocks

PropBlock™ Disposable Bite Blocks feature a unique non-elastic and firm Styrofoam composition that is gentle on patients but strong enough to avoid deformation. PropBlock™ Disposable Bite effectively and comfortably holds size #0, #1, or #2 film for use with the XCP® film positioning system for vertical or horizontal exposures. Convenient scored front easily snaps off for pedo applications and imaging.

**Compare to Dentsply Rinn XCP® Bite Blocks**

- Firm and non-elastic Styrofoam composition for strength and comfort
- Holds size #0, #1, or #2 film for XCP® film positioning system
- Convenient scored front snaps off for Pedo patients



## SureHold™

NEW

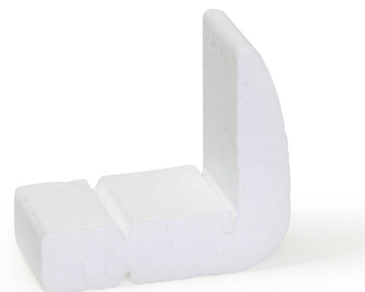
### Disposable X-Ray Film Holder

SureHold™ Disposable X-Ray Film Holders feature a unique non-elastic and firm Styrofoam composition that is gentle on patients but strong enough to avoid deformation.

SureHold™ Disposable X-Ray Film Holders effectively and comfortably holds size #0, #1, or #2 film for anterior and posterior exposures for XCP® and BAI film positioning systems. Convenient scored front easily snaps off for pedo applications and imaging.

**Compare to Stabe® and Supra® film holders**

- Firm and non-elastic Styrofoam composition for strength and comfort
- Holds size #0, #1, or #2 film for both XCP® and BAI techniques
- Convenient scored front snaps off for Pedo patients



## Opti-Quad™

NEW

### Impression Trays

Opti-Quad™ Bite Trays are rigid metal dual-arch impression trays designed to make distortion-free impressions easier than ever. The specially designed reinforced metal tray is ideal for highly detailed impressions.

The Opti-Quad tray features an integrated mesh that prevents material loss, while extending to the handle to ensure the accurate impression of up to four teeth. Each impression tray features low sidewalls, a thinner distal bar, and an adjustable arch to match any arch size. Available in posterior, extra-long posterior, and anterior variations.

**Compare to Quad-Tray™**

- Rigid metal design prevents distortion
- Features low sidewalls and wider arch
- Customizable arch to match every patient
- Large handle for effortless handling



# Infection Control

## Armor™ **NEW**

### Curing Light Sleeves with Paper Backing

Armor custom-fitted curing light sleeves with paper backing are designed to protect curing light tips from cross contamination, and prevents composite from adhering to end of light tip to save your investment. Minimizes staff time spent on cleaning.

#### **Compared to TIDI® Curing Light Sleeves**

- Custom-fitted sleeve for precise and easy placement for popular curing light models
- Made of soft plastic with no sharp edges for maximum patient comfort
- Convenient paper-backing design ensures easy insertion of curing lights



## SureTight™ **NEW**

### Air/Water Syringe Tips

ST air/water syringes feature a unique interlocking system that guarantees a new and secure seal with every new tip. Includes a single water channel with 5 separate air channels that ensures perfect separation of air and water to prevent mixing.

#### **Compared to Kerr® Seal-Tight®**

- Guarantees new and secure seal every time without hassle
- Strong enough for easy cheek and tongue retraction
- Rounded tip for extra patient comfort



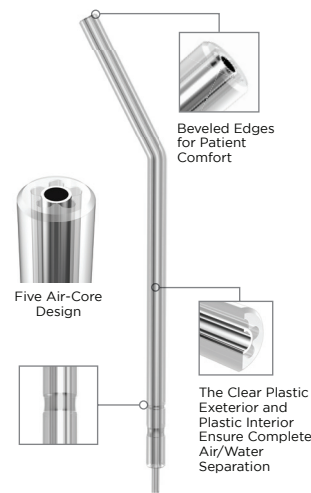
## TruTip™ Plus Colors **NEW**

### Air/Water Syringe Tips

TruTip Plus Color air/water syringe tips feature a clear plastic exterior and metal interior. They are interchangeable with most metal tips, with no conversion necessary. A groove in the tip ensures a snug locking fit so that the tip stays in place throughout the procedure.

#### **Compared to Safe Tip® EZ**

- Five air-core design for even air flow and increased efficiency
- Guaranteed dry air with no moisture contamination
- Interchangeable with most tips with no conversion needed



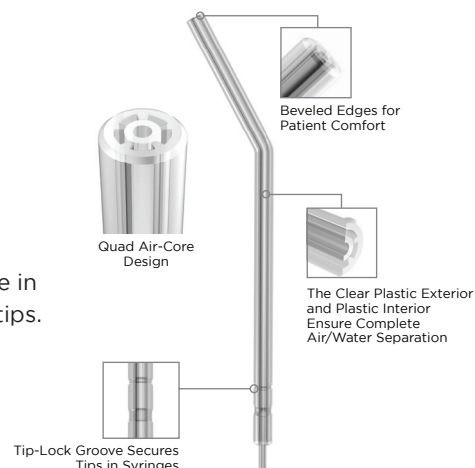
## NeoTip™ **NEW**

### Air/Water Syringe Tips

NeoTips feature a clear plastic exterior and a colorful plastic interior. NeoTips are designed with an inner tube that does not move under pressure, and includes a groove in the tip that ensures a secure locking fit. NeoTips are fully interchangeable with metal tips.

#### **Comparable to Flash Tips® & Crystal Tips®**

- Five air-core design for even air flow and increased efficiency
- Guaranteed dry air with no moisture contamination





## Genius® Gutta-Percha Pellets **NEW**

### Gutta-Percha Pellets

Pac-Dent's Genius gutta-percha pellets are an advanced solution for backflow thermoplastic obturation techniques. They are made with a unique balance of inorganic and organic components to ensure the proper flow velocity while keeping the material under control. Pac-Dent's gutta-percha is highly radiopaque, and easy to recognize on X-rays. It can be used with most gutta-percha guns, making it versatile for fast and efficient obturation procedures.

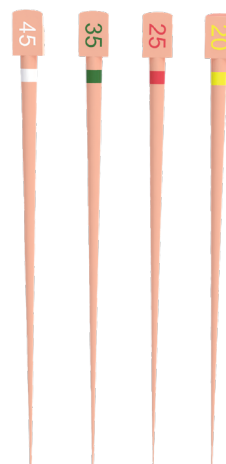


## Genius® Gutta-Percha Points **NEW**

### Gutta-Percha Points

Pac-Dent's Genius Gutta-Percha points utilize a modern proprietary method that eliminates hand-rolling, resulting in a final shape that accurately replicates the instrument's dimensions with a negligible margin of error. Genius Gutta-Percha's unique manufacturing feature ensures perfect adaptation to the canal preparation, particularly in the apical third, and guarantees an airtight seal with the preferred endodontic sealer.

- Manufactured with unparalleled precision using advanced mechanical techniques
- No need of calibration cut or trimming
- Compatible with any sealer and technique
- ISO sizes and color coded



## Improved Flexcann™ **NEW**

### Bendable Irrigation Tips

Pac-Dent's FlexCann tips are 31 ga double side-vented irrigation cannulas to be used during the root canal irrigation phases. The unique angled nozzle design allows correct tip positioning on anterior and posterior teeth without the risk of interrupting irrigant flow by bending the metal part of the cannula. In addition, FlexCann is designed to create the proper shear wear stress on the root canal walls, which is responsible for the mechanical cleaning effect, without the inadvertent expression of the irrigant into periapical tissues. The flexible stainless-steel 31 ga non-tapered cannula safely navigates in curve canals, allowing upward flushing motion.

**Compared to Ultradent NaviTip™, Vista Flexi-Glide™**

- 109° Fixed Angled Nozzle - allows accurate delivery, while avoiding the bending of the needle and interrupting the flow of irrigant
- Double-Side Port - prevents debris and fluid apical extrusion
- Rounded Closed-End Tip - prevents wall laceration



# Endodontics

## iVac™ **NEW**

### Apical Negative Pressure Irrigation System

The iVac™ System is designed to be used during the root canal treatment irrigation phase, preferably connected to a piezo ultrasonic handpiece. The system was created using the three most important concepts established by endodontic research for root canal irrigation and disinfection: ultrasonic vibration, negative pressure, and concomitant irrigation. The iVac system boosts root canal irrigation and disinfection efficacy by uniting these three irrigation fundamentals into one single device that pairs with most piezo ultrasonic units.

- 30 times less irrigant extrusion compared with classic irrigation
- Concomitant irrigation always leads to the use of fresh irrigant
- Allows the irrigating fluid to travel through the entire canal to the working length

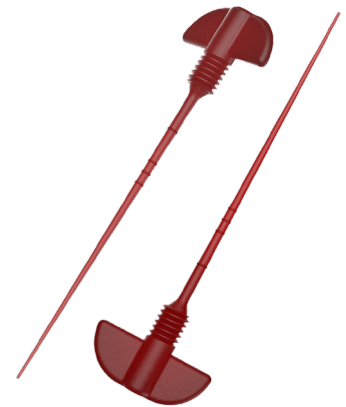


## iVac™ **NEW**

### Peeksonic Ultrasonic Irrigation Activation Tips

Pac-Dent's Peeksonic is made of a durable, flexible PEEK polymer that can navigate canal curves without damaging them, replacing traditional metal ultrasonic irrigation tips that are prone to break during use. PeekSonic is also unaffected by ultrasonic power and has a low risk of breaking. It is compatible with various piezo ultrasonic devices, whether S or E types.

- Small tip diameter (.25 mm) with a .02 taper allows navigating the canals even after minimally invasive preparations.
- PEEK polymer tip vibrates at a similar resonance as metal with higher resistance compared to stainless steel and NiTi tips
- Flexible, following the canal curvatures without compromising the vibration amplitude
- Easy and intuitive setup and operation



## Improved RC Prime **NEW**

RC-Prime is formulated with urea-peroxide 10% and EDTA acid 15% in special water-soluble base to facilitate the engine-driven files action, reducing the friction against the canal walls. RC-Prime chemical action favors the dissolution of organic tissue when used with sodium hypochlorite and also helps in smear layer removal.

**Compared to Premier® RC-Prep\***

