



MonoCem[®]

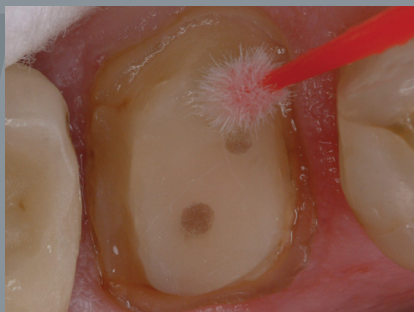
Self-Adhesive Resin Cement



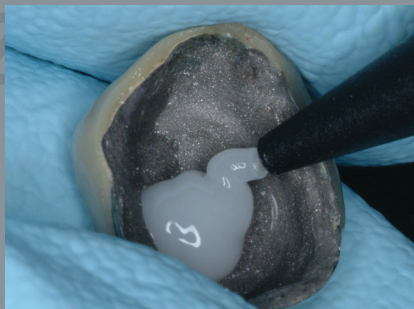
the single
adhesive that meets
your performance needs



CASE STUDY



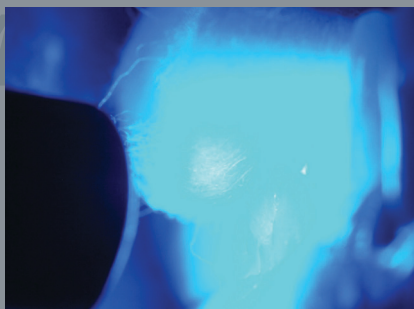
One: Clean, isolate and moisten prepared tooth.



Two: Inject MonoCem into crown and seat on tooth.



Three: Apply occlusal pressure.



Four: Light cure, maintaining occlusal pressure.



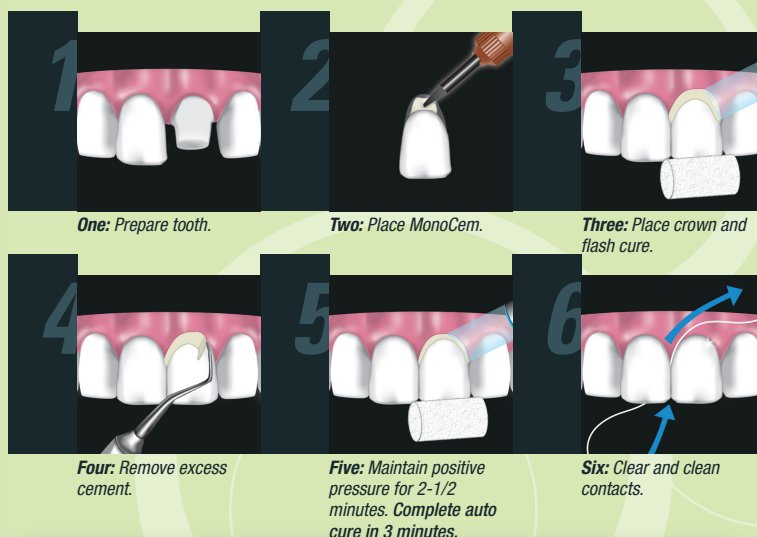
Five: Remove excess and polish margins of the crown.

Photos courtesy of George Freedman DDS, FAACD,

MonoCem®

- Bonds to all substrates with high retention values
- Moisture tolerant with 2 second tack cure for easy clean-up
- Eliminates sensitivity and has high fluoride release
- 100% polymerization/dual cure: 3 minute auto cure; 20 second light cure
- Command set, curing begins at placement
- Very low film thickness (<12µm)

Visit www.shofu.com or call **800.827.4638**



MonoCem self adhesive resin cement is a very simple to use and very effective cement. It handles well with excellent flow properties and clean up is easy. MonoCem exhibits all of the ideal properties of a cement used for luting adhesive ceramic restorations.

Eugene L. Antenucci, DDS
Huntington, NY

I use MonoCem because I only use the best for my patients.

Robert Girschek, DMD
Waltham, MA



Order Information

- Part Number 3208A
- (2) 3.5 Translucent syringes
- Part Number 3209A
- (2) 3.5 Bleach White syringes
- 15 Applicator tips
- 2 OneGloss® PS Midi-Points
- Directions for Use



Shofu Dental Corporation
1225 Stone Drive
San Marcos, CA
92078-4059, USA

SN03-1110

Self-Adhesive Resin Cement