


Mystisa 2






Brushless Portable Micromotor Set
Brushless Table Top Micromotor Set

OWNER'S MANUAL

 Please take a moment to read this manual prior to operation!



 **RAM PRODUCTS, INC.**®

 182 Ridge Road, Suite D, Dayton, N.J 08810  Phone: 732.651.5500
 Fax: 732.651.6688  ram@ramhp.com  www.ramhp.com



BRUSHLESS PORTABLE SET INCLUDES

- ✓ Brushless Handpiece (Lab Type, Slim Type or E-Type)
- ✓ Brushless Portable Controller (Gray or Pink Color)
- ✓ AC Charger
- ✓ Controller Holder with Belt Clip and Handpiece Holder
- ✓ Rubber Stand

Set-Up

Please carefully inspect upon setting up.



There is a protective plastic film over the LCD which can be removed. Do not wipe LCD screen with any abrasives or chemicals. We suggest a microfiber cloth or isoprophyl alcohol.

FRONT



- ① **Motor:** Handpiece motor cord plugs into the male motor connector on the left side. Simply align the groove on the black plastic handpiece connector to the motor connector.
- ② **On-Off, Standby / Pause, Speed Control:** Turn the speed dial knob clockwise (to the right) to turn the Mystisa 2 power on and off. Turning the speed dial can adjust the speed on the display from 0-35. Push the speed dial in to pause, stopping the motor rotation

TOP



③ LCD Color Display

Battery Level Remaining:

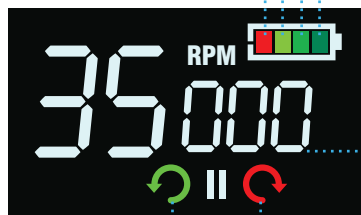
4 Bars: 100% Full Charge

3 Bars: 75%

2 Bars: 50%

1 Red Bar: 25%

Battery Meter
will Start to
Flash if Low
Battery



If Speed
is Flashing,
Indicates
Pause or
Standby

Speed:
2 Digits
x1,000rpms

Green Arrow:
Reverse Direction

Red Arrow:
Forward Direction



- ④ **Plastic Controller Holder:** Convenient acrylic plastic securely holds the controller by sliding in the rear and gently pulling back the 2 front clips, one by one to lock in the controller. On the left side is the handpiece holder which can be adjusted by the Phillips screw to angle upward if resting on the table or desktop. Bottom plastic clip can fit over a belt or pants.
- ⑤ **Forward/Reverse:** Change speed direction by pressing the F/R button on the left side.
- ⑥ Connect the A/C Charger adapter to charge or to use A/C power by plugging in the proper adapter on the right side.



HANDPIECES

Mystisa 2 Slim Type



Only 16mm in diameter is now our smallest and thinnest handpiece designed for comfort. Available for 3/32" chuck type only. Twist the knurled ring counter clockwise to conveniently change bits.

Mystisa 2 Lab Type



18mm diameter with heavy-duty front-end bearings for extended working hours. Turn the knurled ring 1/4 turn clockwise to conveniently change bits. Available for either 3/32" chuck type or 1/8" chuck type.

Mystisa 2 E-Type



Allows for versatility to connect standard e-type handpieces which can also be autoclaved for intraoral use



BRUSHLESS TABLE TOP SET INCLUDES

- ✓ Brushless Handpiece (Lab Type, Slim Type or E-Type)
- ✓ Brushless Table Top Controller (White Color)
- ✓ AC Universal Power Supply with Cord (100-240V)

Set-Up



- ① **Motor:** Handpiece motor cord plugs into the male motor connector on the left side. Simply align the groove on the black plastic handpiece connector to the motor connector.
- ② **On-Off, Standby / Pause, Speed Control:** Turn the speed dial knob clockwise (to the right) to turn the Mystisa 2 power on and off. Turning the speed dial can adjust the speed on the display from 0-35. Push the speed dial in to pause, stopping the motor rotation.
- ③ **LCD Color Display:** Operation indicator, speed display and error alerts.
- ④ **Hand/Foot:** When set in the hand position, the hand indicator light will turn on, the speed is completely controlled by the speed dial knob. When set in the foot pedal mode, the foot indicator light will turn on, the speed is controlled by the settings of the knob when using the on/off pedal.
- ⑤ **Forward/Reverse:** Change handpiece direction to forward or reverse.
- ⑥ **Bits Holder:** Convenient built-in 6 bits holder.
- ⑦ **Handpiece Holder:** Convenient built-in handpiece holder.

Compact Size is Ideal for Table Top (3.6"x3.3")
Fits Mystisa 2 Brushless Handpieces Only



ERROR CODES

- E1** — Check handpiece connection or no connection.
- E2** — Battery low power. Needs to be recharged.
- E3** — Controller has an electrical problem.

Caution:

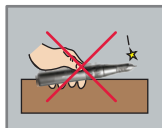


Transport and storage conditions:
Temperature: -4 ~ 140 °F
Humidity: 0 ~ 90% RH
Atmospheric Pressure: 500hPa to 1060xhPa

Use bits conforming to ISO standards



- 1 Be careful not to drop the handpiece as it may damage the bearings.



- 5 Do not put the handpiece down before it stops rotating completely.



- 2 If dropped, check if the bit is bent or if any excessive heat or noise is generated, operating it slowly and carefully.



- 6 Use safe rotating speeds suggested by the bur manufacturer.



- 3 Do not turn on the power of the controller while the collet of the handpiece is in the unlocked open position.



- 7 Keep the workplace clean. Debris may cause an accident. Always wear proper eye protection.



- 4 Always keep a bur or blank mandrel in the handpiece.

Suggested Maintenance

- Keep the handpiece clean of dust and grindings as best as possible.
- Wipe the handpiece down only with isopropyl alcohol gently and avoid getting the inside components wet. It is normal for the handpiece to feel slightly warm after continued usage.
- Do not oil the handpiece and do not clean with water (bearings are grease sealed).
- Clean gently with a can of compressed air.

Warranty

- 1 Year on Control Box and 6 Months on Handpiece
(Warranty does not include misuse or normal wear of consumable parts)

Battery Warning



- Controller uses a Li-on Lithium Ion battery which can be recharged approximately 500 times or has an approximate 5 years life. Use the battery and enjoy the freedom and flexibility.
- In case of contact with liquids or body skin or eyes wash immediately.
- In case of shorter operating time between charging or if slower speeds, it could indicate the battery is wearing or not charging properly. Li-on batteries do not have a memory affect and do not need complete discharge.

The battery is user replaceable.

WARRANTY PERIOD

Warranty is valid within the United States only.

ELECTRICAL EQUIPMENT - These products are under warranty for a period of ONE YEAR from the date of original installation by the purchaser.

HANDPIECES - These products are under warranty for a period of SIX MONTHS from the date of original installation by the purchaser. IT DOES NOT COVER MISUSE, NORMAL BEARING, OR CARBON BRUSH WEAR.

IN HOUSE OR FACTORY REPAIR - Repairs made under warranty will be honored until the completion of the original product warranty period. SHIPPING AND HANDLING CHARGES ARE NOT COVERED WITHIN THE WARRANTY.

PRODUCT WARRANTY

All returned items shall be free from defects/alterations in material, workmanship and original product design.

- The product shall have been used under the conditions for which it has been intended, and in a manner for which it has been designed.
- The product shall have been operated in a manner for which it was intended and in the proper environmental conditions.
- The customer must maintain the product as specified within the individual product instruction booklet.

Electrical and mechanical equipments and accessories which are mishandled, used incorrectly, and/or used for a purpose other than that for which they were designed and intended, will void the product warranty.

WARRANTY CLAIMS

Should your product require service attention within the warranty period, we will elect to make the necessary repair or replacement at no charge and providing the product is delivered prepaid to the proper address. However it is recommended that returns be adequately insured against carrier loss or damage.

All claims should describe the specific problem for accurate analysis and evaluation, the return date of the warranty card along with the supply house and/or dealer name.

No product replacement is permitted without prior authorization.

PRODUCT: _____

SERIAL NO.: _____

PURCHASE FROM: _____

PURCHASE DATE: _____

INSTALLATION DATE: _____

WARRANTY REGISTRATION

REGISTER ONLINE at www.ramhp.com/warranty

In order to validate your warranty, this card must be filled out completely and mailed within 10 days of purchase/installation.

PLEASE PRINT OR TYPE

NAME: _____

ADDRESS.: _____

CITY: _____

STATE: _____ ZIP CODE: _____

PRODUCT: _____

CITY: _____

SERIAL NO(S): _____

PURCHASE DATE: _____

INSTALLATION DATE: _____

DEALER OR SUPPLY HOUSE NAME AND ADDRESS:

The short survey below is designed to improve the service and quality of product supplied to our customers. Please take a few minutes to complete the survey.

Did the item arrive in a satisfactory condition? **YES** or **NO**?

If NO please explain:

Did the instruction manual provide all details clearly for proper installation and operation? **YES** or **NO**? If NO please explain:

What factor(s) were involved in your decision to purchase this product:

- ☐ Advertisement ☐ Previous Purchase of a Ram Product
☐ Distributor Recommendation ☐ Recommendation by Colleague

Any feedback, comments or suggestions:

Thank you for your feedback.



RAM PRODUCTS, INC.®

182 Ridge Road Suite D, Dayton, NJ 08810

1-732-651-5500

www.ramhp.com

1-732-651-6688

ram@ramhp.com



www.ramhp.com

