

# RP300 HANDPIECE

## OWNER'S MANUAL



**RAM PRODUCTS, INC.®**

182 Ridge Road, Suite D, Dayton, N.J 08810

732.651.5500

732.651.6688

ram@ramhp.com

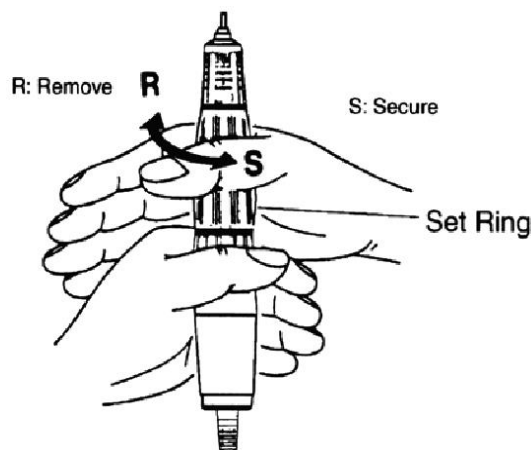
www.ramhp.com

### CONTENTS

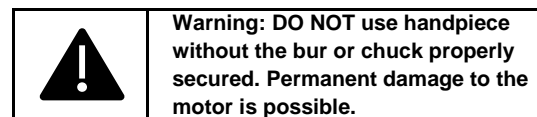
USE AND OPERATION OF THE CHUCKING MECHANISM	...1
SUGGESTED MAINTENANCE	...2
PRECAUTIONS	...2
SCHEMATIC DIAGRAM	...3
PARTS LIST FOR HANDPIECE	...4

#### A. USE AND OPERATION OF THE CHUCKING MECHANISM FOR RP300 HANDPIECE

1. When you first receive your OTG, you will see a "blank" bur already inside the chuck of the handpiece.
2. With the drill held upright (front of the drill pointing upwards). Hold the handpiece pointing upward with your left hand. Turn or twist the set ring clockwise towards you. It is spring-loaded and you will feel some resistance. Turn another ¼ turn and you will hear a click or snap and the blank mandrel or bur is released as the chuck is in the open position.
3. As you can see from the outside of the handpiece, it is made up of 4 complete sections. Your left hand should be holding the bottom two metal sections. Now, with your right hand, take your thumb and index finger and turn the set ring (the 2nd section of metal from the top part of the drill). Turn the set ring clockwise until you hear it click. Once you hear the click, your chuck is now in the open position to allow you to remove the blank bur and change it for one of your own.
4. When inserting a bit, please leave a little space between the bottom of the bur and the top of the chuck to be sure they are not touching each other causing friction or hindering rotation.
5. After installing your drill bit, turn the set ring counter clockwise to lock the drill bit in place. You are now ready to use the drill.



Please note: The wrench enclosed with your drill is not needed to open or close the chucking mechanism. This handpiece wrench is only used for repair service.



#### C. SUGGESTED MAINTENANCE

1. Carbon brushes in the handpiece motor are designed for long life (approximately 1,000 hours). Carbon brushes should be replaced periodically (approximately 1 year). Replacement part number is #8508.
2. Keep clean from dust and grindings as best as possible.
3. Wipe handpiece only with isopropyl alcohol and avoid getting inside wet. DO NOT use rusty or eccentric burs as this will cause excess wear on the bearings. Follow safety speeds and precautions recommended by the bur manufacturer. Always wear a dust mask, eye protection, and use adequate suction or ventilation.
4. Do not drop the handpiece at any time as this may cause damage to the bearings. In the event the handpiece is dropped, please check that the bur is not bent and resume use carefully, checking for excess noise or heat. If any damage, please return to manufacturer for service.

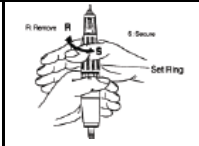
#### D. PRECAUTIONS

The brushes are located in the back of the handpiece, in the section closest to the power cord.

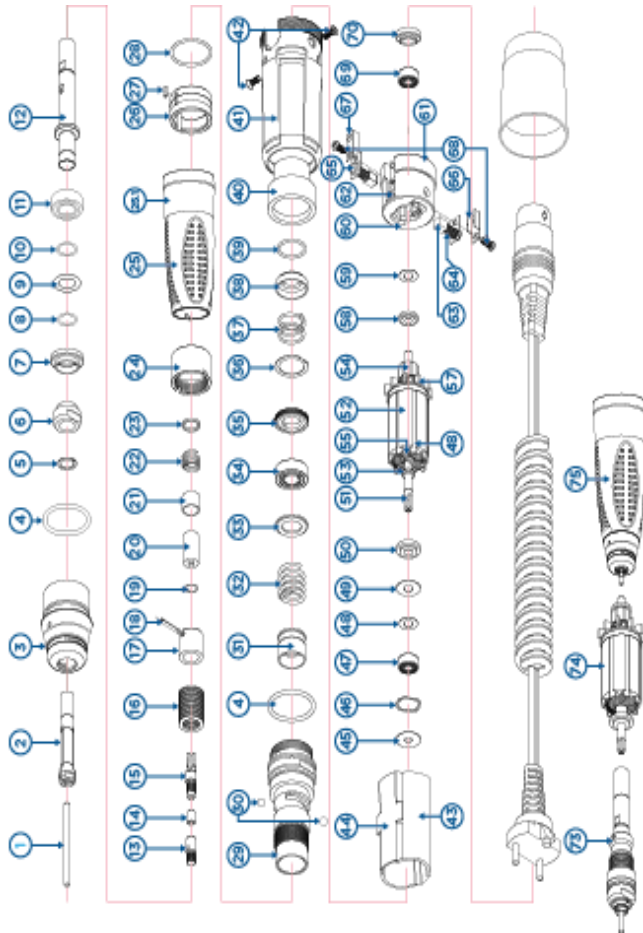
1. When using electric tools, use basic safety precautions in order to reduce risk of fire, electric shock, and personal injury.
2. Do not expose electric tools to water, or use in damp or wet locations.
3. Do not wear loose clothing or jewelry as they can be caught in the drill.
4. Do not attempt to service or repair the handpiece, control box, or the foot pedal. There is no user serviceable part in the equipment other than changing the motor brushes or handpiece cord. Repair should be referred to the manufacturer, dealer or authorized service center.
5. Do not oil, lubricate, or grease the handpiece (This will only lead to further damage of the greased sealed bearings).
6. Do not attempt to open the collet (release bur) while handpiece is running.
7. Do not switch forward or reverse direction until motor has completely stopped.

8. Do not sterilize or autoclave. Do not get handpiece wet (except for the front-end attachments with the "E"-type motor).
9. When machine is not in use, power switch should be turned off.
10. Do not run the handpiece without a bur properly locked in place.

**Warning: NEVER TURN SET RING WHILE MOTOR IS ROTATING. PERMANENT DAMAGE TO THE MOTOR IS POSSIBLE.**



## PARTS LIST FOR RP300 HANDPIECE



NO.	PARTS NAME	NO.	PARTS NAME
1	TEST BUR	39	1030 FIX O-RING
2	COLLET CHUCK 2.35	40	MOTOR CASE
3	NOSE CAP	41	MOTOR CASE COVER(BLUE)
4	NOSE CAP O-RING	42	MOTOR CASE BOLT
5	RING	43	MAGNET
6	COLLAR	44	MAGNET GUIDE
7	B/R STOP COLLAR	45	COPPER WASHER
8	814 WAVE WASHER	46	1030 WAVE WASHER
9	814 WASHER 2	47	BALL BEARING 1040ZZ
10	814 WASHER 1	48	1040 COPPER WASHER
11	BALL BEARING (814ZZ)	49	1040 TEFLON WASHER
12	CHUCK HOUSING	50	1040 SPACER
13	CONNECTION PIN	51	SHAFT Ø4
14	SPACER	52	CORE
15	JOINT SHAFT	53	FRONT SHAFT BUSH Ø4
16	DISC SPRING	54	COMMUTATOR
17	SPRING STOPPER	55	COIL
18	SPRING PIN	56	WEDGE
19	O-RING	57	FAN
20	CONNECTOR	58	830 SPACER
21	SPRING SPACER	59	TEFLON WASHER
22	COIL SPRING 1	60	BEARING HOUSING
23	SPRING SHEET	61	BACK BEARING SIT
24	HAND CAP STOPPER	62	BRUSH HOLDER
25	HAND CAP (BLUE)	63	CARBON BRUSH
26	SET RING	64	CARBON BRUSH SPRING
27	SET KEY	65	CARBON BRUSH CAP
28	CAM O-RING	66	TERMINAL (L)
29	CAM	67	TERMINAL (R)
30	BALL	68	CARBON BRUSH BOLT
31	MOVING HOUSING	69	BALL BEARING (1030ZZ)
32	COIL SPRING 2	70	BEARING BRUSH BOLT
33	B/R COLLAR	71	MOTOR CORD
34	BALL BEARING(1360ZZ)	72	CARBON HOUSING COVER(BLUE)
35	B/R STOP BOLT	73	SPINDLE ASS'Y
36	MOTOR CASE C-RING	74	ARMATURE ASS'Y
37	MOTOR CASE COIL SPRING	75	BHS1 ASS'Y
38	MOTOR CASE SPRING SHEET		

## WARRANTY PERIOD

Warranty is valid within the United States only.

**ELECTRICAL EQUIPMENT** — These products are under warranty for a period of ONE YEAR from the date of original installation by the purchaser.

**HANDPIECES** — These products are under warranty for a period of SIX MONTHS from the date of original installation by the purchaser. IT DOES NOT COVER MISUSE, NORMAL BEARING, OR CARBON BRUSH WEAR.

**IN HOUSE OR FACTORY REPAIR - WARRANTY CLAIMS** — Please visit our website, [www.ramprodinc.com](http://www.ramprodinc.com), to download the **Customer Service Request Form** located at the top right of the website page. For warranty claims, please include a copy of your invoice or reference purchase date.

It is your responsibility to get the unit to us. Return shipping and handling is covered by Ram Products, Inc.

## PRODUCT WARRANTY

All returned items shall be free from defects/alterations in material, workmanship and original product design.

- The product shall have been used under the conditions for which it has been intended, and in a manner for which it has been designed.
- The product shall have been operated in a manner for which it was intended and in the proper environmental conditions.
- The customer must maintain the product as specified within the individual product instruction booklet.

Electrical and mechanical equipments which are mishandled, used incorrectly, and/or used for a purpose other than that for which they were designed and intended, will void the product warranty.

## WARRANTY CLAIMS

Should your product require service within the warranty period, we will elect to make the necessary repair or replacement at no charge including return shipping. It is your responsibility to return the product to Ram Products and it is recommended that returns have tracking information and to be adequately insured against carrier loss or damage.

All claims should describe the specific problem for accurate analysis and evaluation, the return date of the warranty card along with the supply house and/or dealer name.

## WARRANTY REGISTRATION

In order to validate your warranty, the form must be filled out completely on the website: [www.ramprodinc.com/warranty](http://www.ramprodinc.com/warranty) within 10 days of purchase/installation.



182 Ridge Road Suite D, Dayton, NJ 08810

1-732-651-5500 [www.ramhp.com](http://www.ramhp.com)

1-732-651-6688 [ram@ramhp.com](mailto:ram@ramhp.com)



[www.ramhp.com](http://www.ramhp.com)