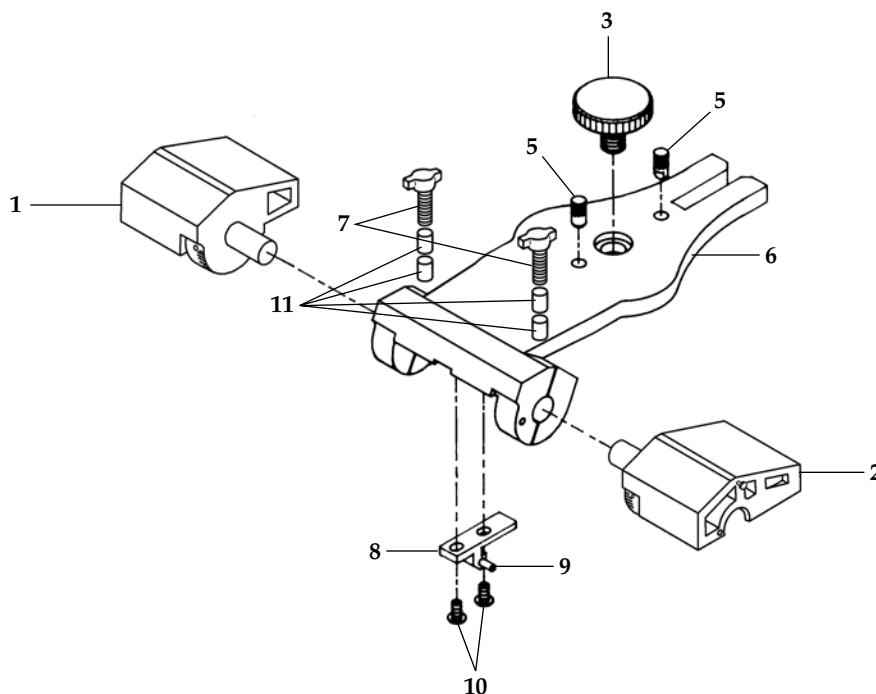


DENAR® PARTS LIST

ANAMARK UPPER ASSEMBLY

113001-201

PART #: 8806
EFFECTIVE: 4-1-14
SUPERSEDES: 8-1-12



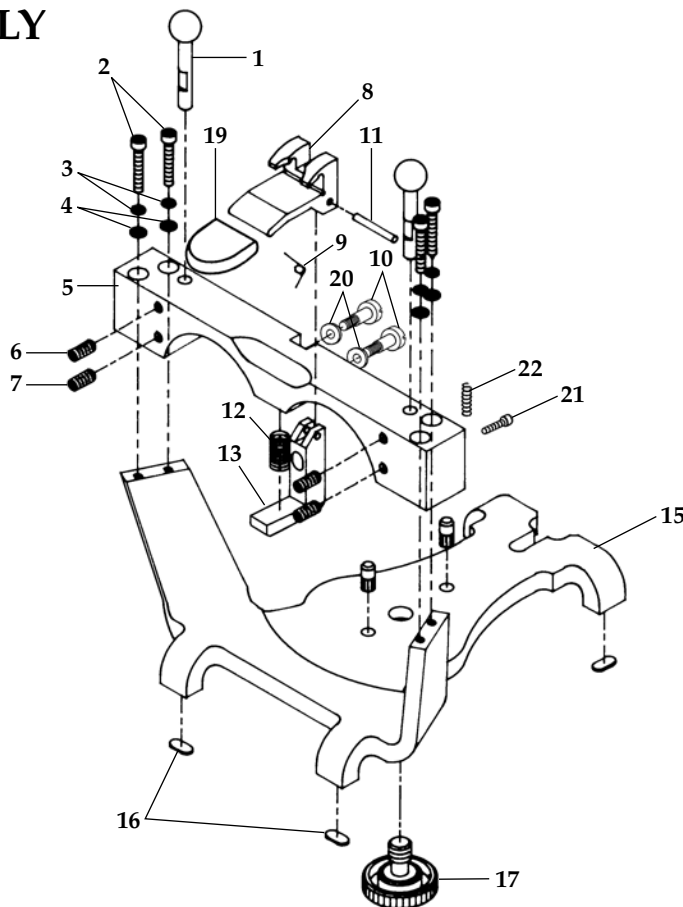
Key #	Part #	Description
1	110272-4L or 110272-5L	Fossa 0.5mm Beige Fossa 1.0mm
2	110272-4R or 110272-5R	Fossa 0.5mm Beige Fossa 1.0mm
3	110083	Knob/Screw Assembly
5		Dowel Pin*
6		Upper Bow*
7	20010325	Screw
8		Latch Guide*

Key #	Part #	Description
9		Dowel Pin*
10		Screw*
11	3694	Spacer
12	113007	Screw
Not Shown	8115-1	Manual

* Factory Repair Required
R Right
L Left

ANAMARK LOWER ASSEMBLY

113001-201



Key #	Part #	Description	Items Incl.
	110350	Pivot Block Kit***	10, 13, 20
1		Condyle Ball and Shaft*	
2	3113	Screw	
3	3159	Lock Washer	
4	110031	Washer	
5		Lower Crossbar*	
6	110202	Set Screw	
7	3032-1	Set Screw	
8		Latch MK II*	
9		Spring*	
10	34859-2	Shoulder Screw**	
11		Dowel Pin*	
12		Spring*	

Key #	Part #	Description
13		Pivot Block*
14		Dowel Pin*
15		Lower Bow*
16	110182	Foot
17	110083	Thumbscrew
19	3769	Cap, Vinyl Latch
20	35021-1	Washer**
21	3771	Screw
22	3764	Spring
Not Shown	110293-1	Case

* Factory Repair Required

** Articulator purchased
Jan. 1, 2012 or after

*** Articulator purchased
before Jan. 1, 2012

R Right

L Left



RESTORATIVE ORAL HEALTH
Whip Mix Corporation
361 Farmington Avenue
Louisville, KY USA 40209
Toll-Free: 800-626-5651
Fax: 502-634-4512
www.whipmix.com