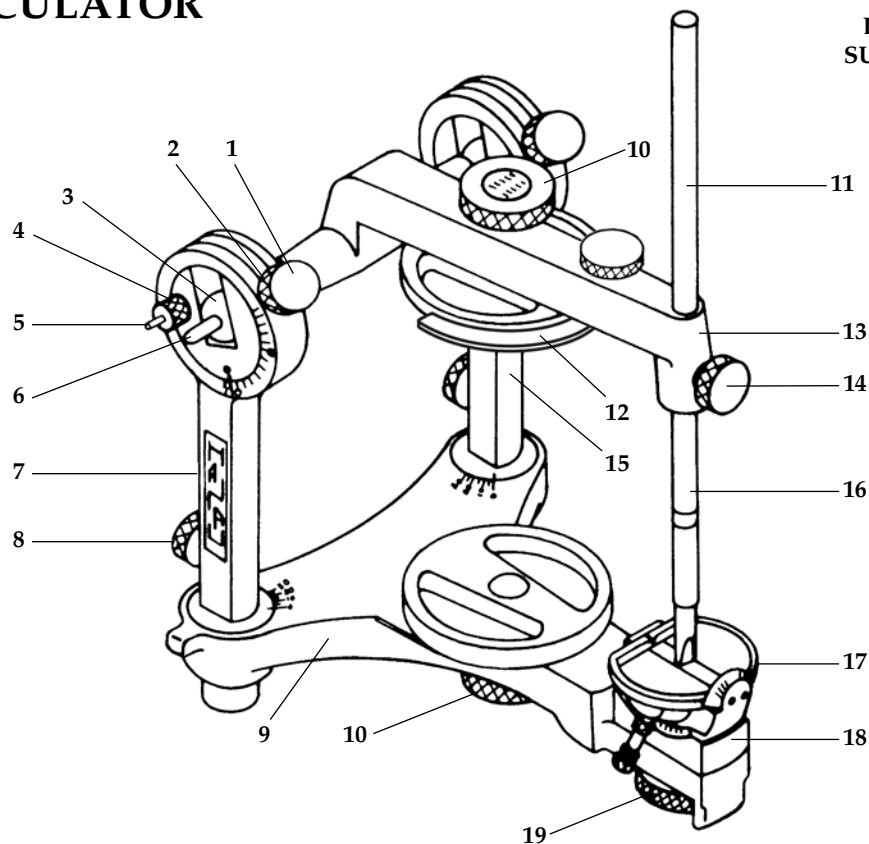


HANAU™ PARTS LIST

96H2 ARTICULATOR

003302-000

PART #: 20000645
EFFECTIVE: 1-01-2015
SUPERSEDES: 8-01-2011



Key #	Part #	Description
1	005190-000	Thumbnut
2	3062	Washer
3		Condyle Element*
4	005198-001	Centric Pin
5	008901-001	Auditory Pin
6		Condyle Shaft Assembly*
7		Right Condylar Post Assy.*
8	003323-000	Thumbscrew
9		Lower Member*
10	20001007	Thumbscrew

Key #	Part #	Description
11	005243-000	Incisal Pin Extension
12	005052-000	Orbitale Indicator Assy.
13		Upper Member*
14	005182-000	Thumbscrew
15		Left Condylar Post Assy.*
16	003330-000	Incisal Pin
17		Incisal Guide*
18		Rocker Base*
19		Locknut*

* Factory Repair Required



RESTORATIVE ORAL HEALTH
Whip Mix Corporation
361 Farmington Avenue
Louisville, KY USA 40209
Toll-Free: 800-626-5651
Fax: 502-634-4512
www.whipmix.com