



A6 Installation Information for Junction Box

AIR:

- ½" pipe N.P.T. protruding 1" from floor or wall. Supplied by contractor.
- Manual air shut-off valve to be installed by contractor.
- Air pressure 70 - 80 psi.
- Air plumbing should be flushed clean before making final connections to dental equipment.

WATER:

- ½" pipe N.P.T. protruding 1" from floor or wall. Supplied by contractor.
- Manual water shut-off valve to be installed by contractor.
- Water pressure 35 - 40 psi.
- Water plumbing should be flushed clean before making final connections to dental equipment.

ELECTRICAL:

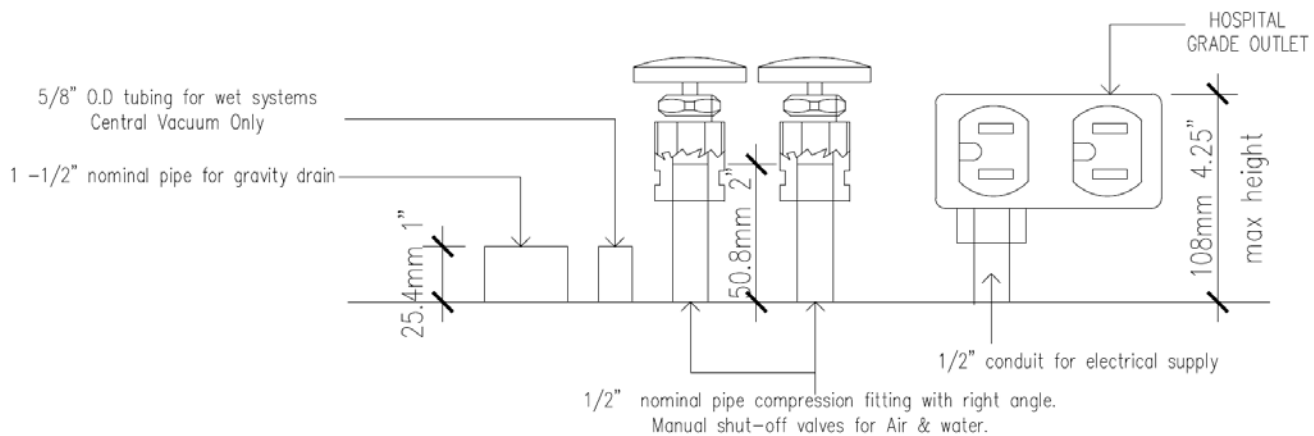
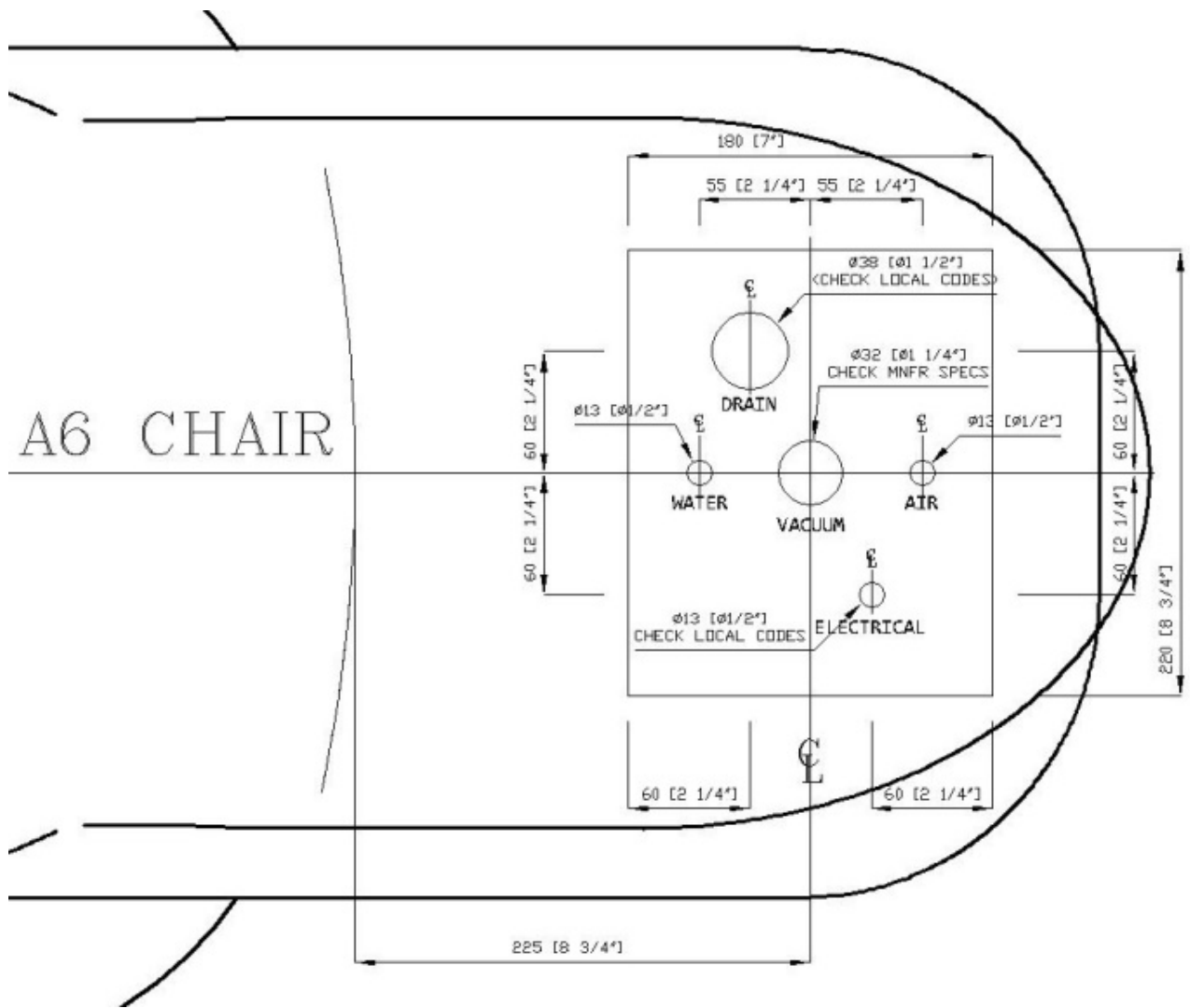
- ½" conduit (or by code) and box with dual or equal receptacle supplied by contractor.
- Wire box as per code with top of the box no higher than 4½" above finished floor.
- Voltage: 115 Volts AC 3 wire or 230 Volts AC 3 wire (for 230V system).

CENTRAL VACUUM:

- Plumbing up to utility center should be specified by central vacuum supplier (usually 1¼") and terminated in utility center with 1/2" OD connection perpendicular to floor, similar to drain connection.

GRAVITY DRAIN:

- In floor pipe of 1½" is recommended (or what local code requires), terminated with 5/8" OD tube protruding 1" from finished floor.



THIS DRAWING IS FOR REFERENCE ONLY & IT IS NOT TO SCALE