

A6 Assembly Instructions



Tools Required:

- Allen (Hex) keys sets (Metric and Imperial)
- Phillips screw driver – medium size
- Slot head screw driver – medium size
- Slot head screw driver – extra small size
- Screw starter or holder
- Wire fish
- Needle nose pliers – medium size
- Moving dolly with pull rope
- 10” magnetic level, digital type is preferred
- Standard pliers or cutters
- Hammer drill (if mounting the base to the concrete floor, with anchors)
- Utility knife
- Masking or electrical tape
- Handpiece pressure gauge

The A6 Flight chair now comes in 5 boxes. All the boxes will fit through a standard doorway. The main box (Fig. 1) is strapped on a pallet and can be placed on a dolly by 2 men and taken into the room for un-crating and assembly. Each box (Fig. 2) is labelled as to the order that they should be opened and installed. Follow the instructions at the figures below.



Figure 1: The main box (#1) is 29" wide x 50" long x 30" high, including the pallet.



Figure 2: boxes 2, 3, 4 & 5.



Figure 3: Cut the straps and remove the top cover and sides.



Figure 4: Unwrap the upholstery and put it aside.



Figure 5: Uncover the chair.



Figure 6: Cut the nylon ties holding the chair bracket to the pallet. Unwrap the chair bracket.

Lift the chair off the pallet and place it in its final location. Plug the chair into an outlet and use the foot controls to raise the chair to a better working height.

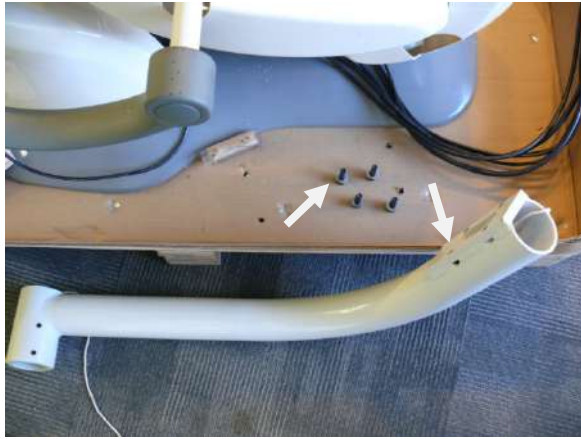


Figure 7: Remove the 4 bolts from the bracket.



Figure 8: Locate the spot where the chair bracket will be bolted to.

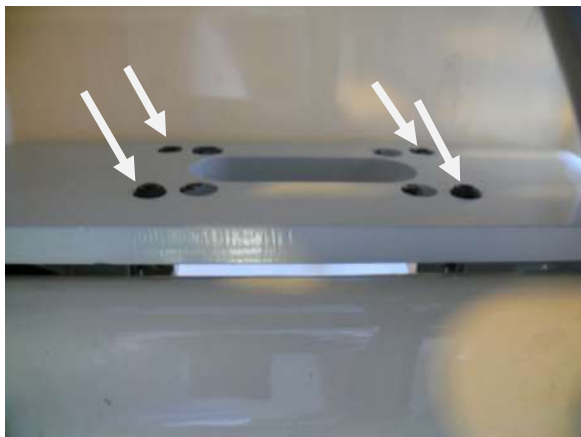


Figure 9: Notice the jacking setscrews. They will be used to level the bracket.

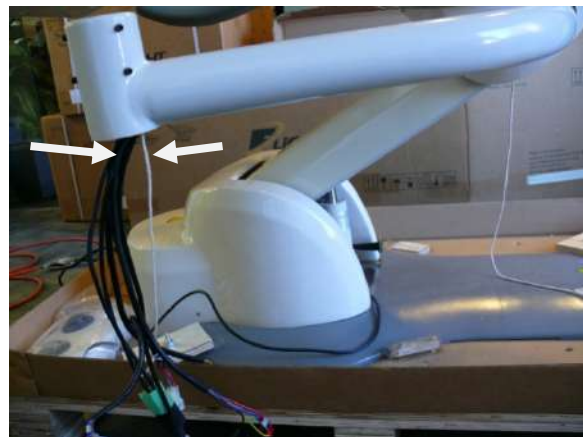


Figure 10: Insert the bracket into the opening and attach with 4 bolts. Hand tight is ok.



Figure 11: The cables will be passed through this oval opening. Pass the cables through and let them out from the bottom of the post hole.



Figure 12: Use a box to support the bracket. Either use the string or simply push them through one at a time, starting with the biggest connector. Avoid kinks.



Figure 13: Place a level on the bracket and adjust the jacking setscrews and bolts as needed to get a perfect level.

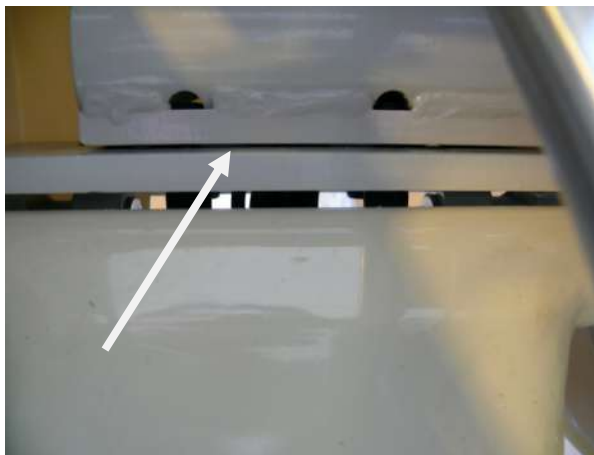


Figure 14: When done, tighten all the bolts and setscrews. Having a gap is normal.

Open up box #2. This contains the side box for the chair.



Figure 15: Remove the foam insert.



Figure 16: Take out the cuspidor, assistant touchpad, HP holders and water bottle. Move the utility box out of the carton and then carefully lift up the side box and install it into the post hole.



Figure 17: Use these setscrews to hold and level the side box. The lowest one supports the bottom of the pipe. There are 6 other setscrews to adjust the side to side level. The box should be parallel to the chair.



Figure 18: Use a level in both directions and tighten the setscrews in the post hole.



Figure 19: Try for best level.



Figure 20: The side box should be parallel to the chair and level in both directions when you are done.



Figure 21: Remove the 2 screws holding the assistant touchpad. Install the HP holder to the assistant post. Push the cable through for the touchpad.



Figure 22: Turn the setscrew in and leave it flush.

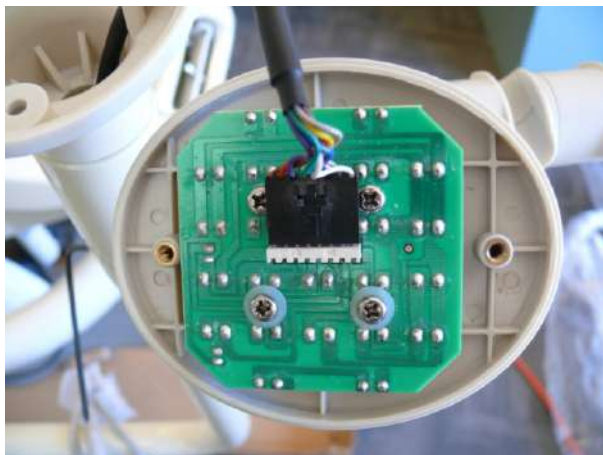


Figure 23: Plug the flat connector into the touchpad. Attach the touchpad with the original 2 screws.



Figure 24: Install the syringe and ejectors.



Figure 25: Push the cables from the bottom of the post hole into the side box. Move the tubes up and out of the way to make room for the cables.



Figure 26: All the cables pulled through and out.



Figure 27: Connect the wires for the light to the circuit board. They are labeled 0V, 24V, and K-Light. The board will also have labels.

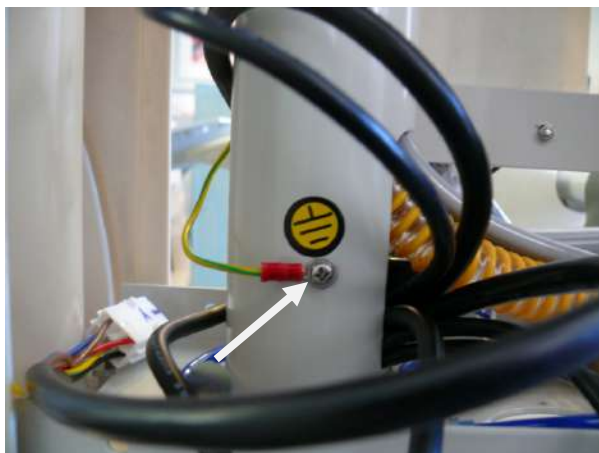


Figure 28: Attach the ground wire to the post.

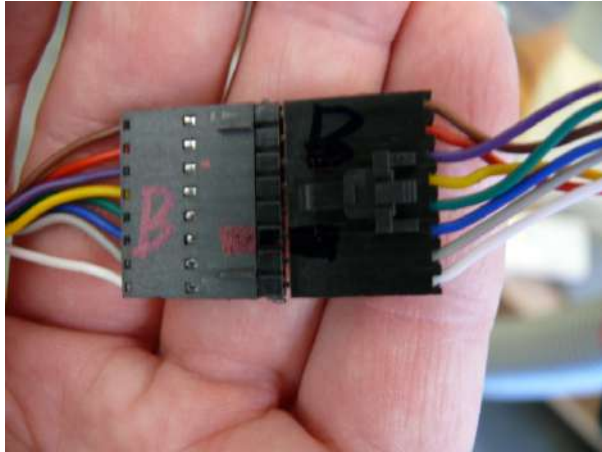


Figure 29: Connect the flat connectors together. Match the colors. Match the labels.

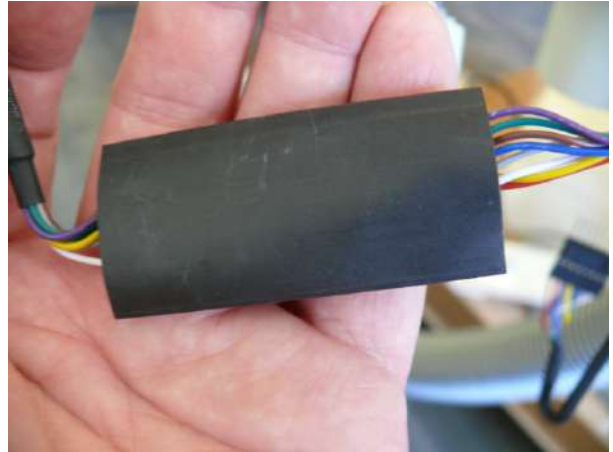


Figure 30: Use heat shrink tubing or electrical tape to hold them together.

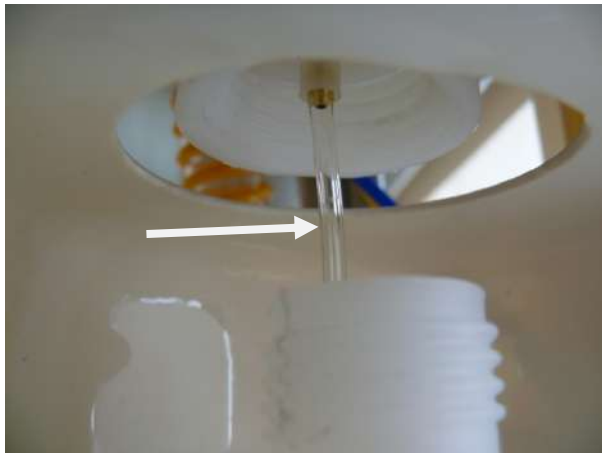


Figure 31: Insert the tube into the bottle before installing the water bottle.



Figure 32: Install the water bottle.

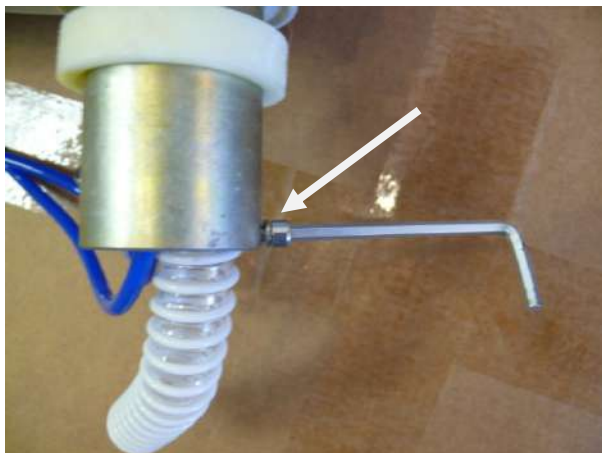


Figure 33: Install the cupidor. First, remove the bolt at the bottom of the drain pipe. Then install the cupidor in the side box cupidor opening.



Figure 34: Replace the bolt at the bottom of the drain pipe.

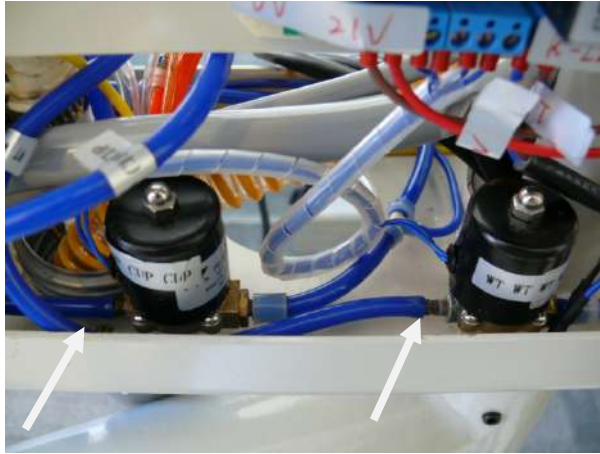


Figure 35: Connect the blue water tubes to the correct solenoid valves. They are labeled. Use the tube clamps (located in a bag in the side box) to secure the tubes.



Figure 36: Attach the drain tube to the 'Y' connector. Use a hose clamp to secure it.

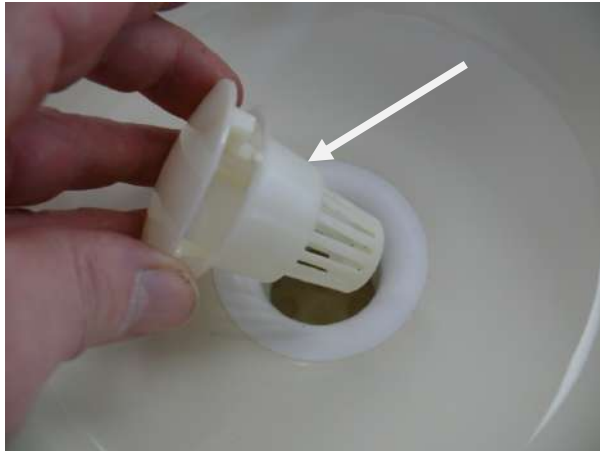


Figure 37: Install the cuspidor strainer.



Figure 38: Install the cup fill and bowl rinse spouts.



Figure 39: Install the nut and screw in the assistant arm. They are in a bag in the side box. A screw holder is helpful to get it started.

Open Box #3. This contains the treatment tray and arm. Take the parts out of the box and lay them on the floor. The arm parts are connected with a bunch of tubes and cables. The 'S' pipe is not attached yet.



Figure 40: Remove the foam insert.



Figure 41: Take the contents out of the box carefully. All except the 'S' pipe are connected.



Figure 42: Open the tray cover and remove the bag of fittings and the bag of grease.



Figure 43: Bag of grease. Use this to grease all the bare metal parts.



Figure 44: Lay out the connected parts.



Figure 45: Remove the oval cover. Use an Allen wrench in the cover hole to pull the cover off.



Figure 46: Carefully push and pull the tubes and cables from the treatment tray and out the oval opening. Grease the bare metal.



Figure 47: Pull the same tubes and cables from the end of the flex arm to take up all the slack at the oval opening. This will move the parts together.

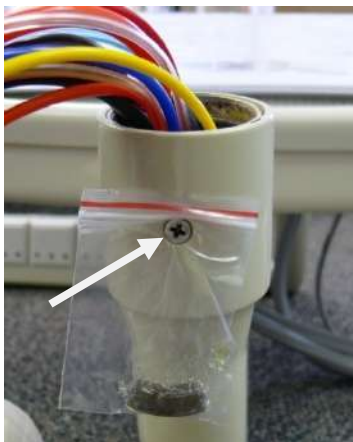


Figure 48: Remove the small bag attached to the collar of the treatment tray.



Figure 49: Push the parts together. Slide the collar towards the tray. That will expose a slot in the pipe end. Insert the tray clasp from the small bag here. Add grease to the slot.

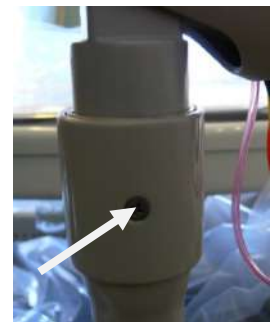


Figure 50: Push the collar back and re-install the screw.



Figure 51: Pull any slack tubes and cables out to the end of the flex arm. The light blue tube is just folded over and inserted into the arm. Avoid kinking it. Re-install the plastic oval cover.



Figure 52: Straighten and untangle the tubes and cables at the end of the flex arm.



Figure 53: Install the small plastic ring.



Figure 54: Use masking or electrical tape to attach the tube/cable bundle to the rope in the 'S' pipe. Carefully push and pull the bundle through the 'S' pipe narrow end.



Figure 55: Pull all the slack from the tubes/cables. Connect the 'S' pipe to the arm. Grease the bare end.



Figure 56: Tighten the setscrew but not too tight.

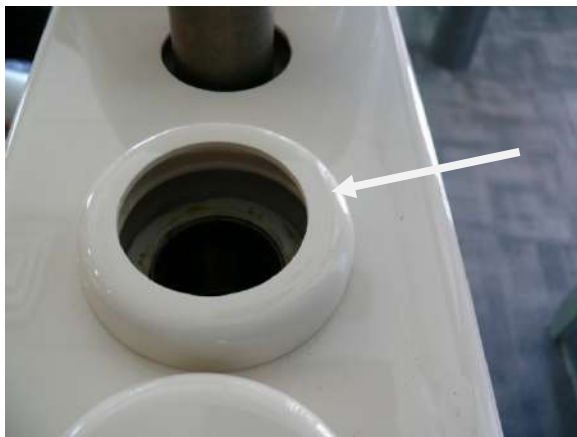


Figure 57: Install the large plastic ring on the side box. Feed the tube/cable bundle through the ring and into the side box. Tie the treatment tray flex arm to keep it from moving while you lift the assembly.



Figure 58: Install the 'S' pipe into the hole. Pull the tubes/cables out of the slot in the side box pipe.

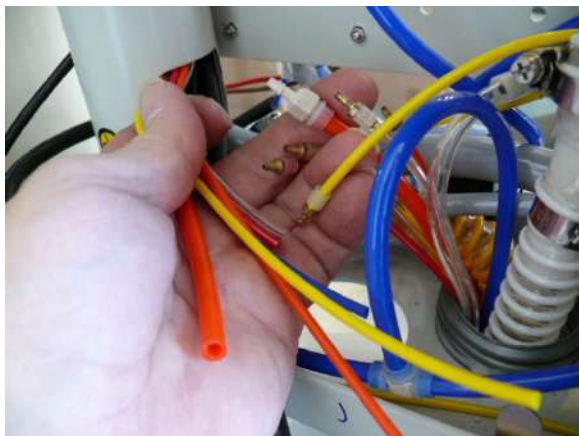


Figure 59: Match the tube colors and connect them together. Use plastic sleeves to secure them.

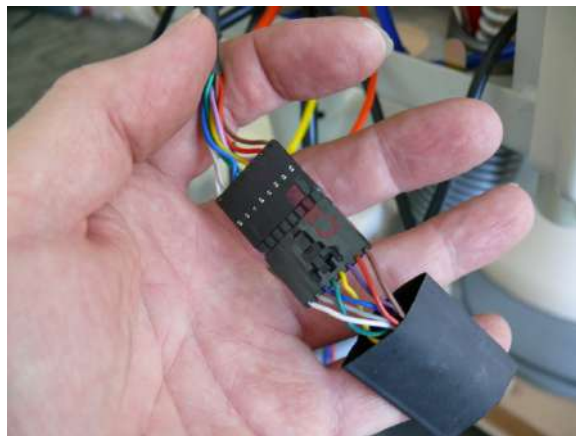


Figure 60: Connect the cables. Match the colors. Use heatshrink tubing or electrical tape on the flat cables.



Figure 61: Connect cables by matching the labels.



Figure 62: Treatment tray install finished.

Open Box #4. Remove the parts. Notice the 3 plastic rings.



Figure 63: Contents of Box #4. Remove parts.



Figure 64: Install the small plastic ring as shown. Grease the bare metal parts.



Figure 65: Pass the wire through the 'S' pipe. Grease the bare metal.

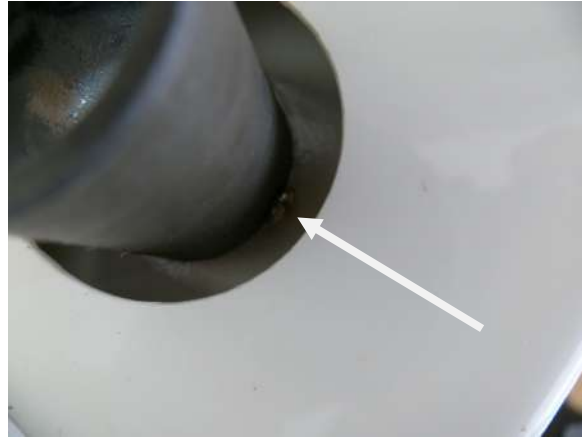


Figure 66: Notice the screw head at the bottom of the light post. Grease the post.

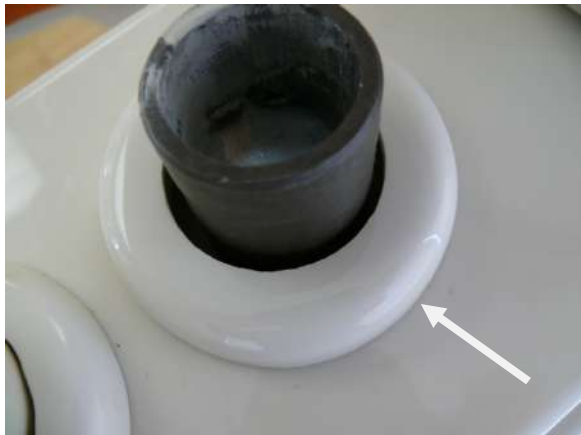


Figure 67: Install the plastic ring over the light post.

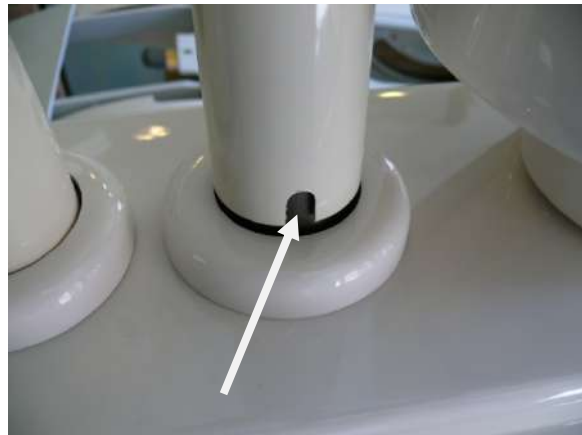


Figure 68: Install the straight pipe on the light post and line up the slot with the screw head.

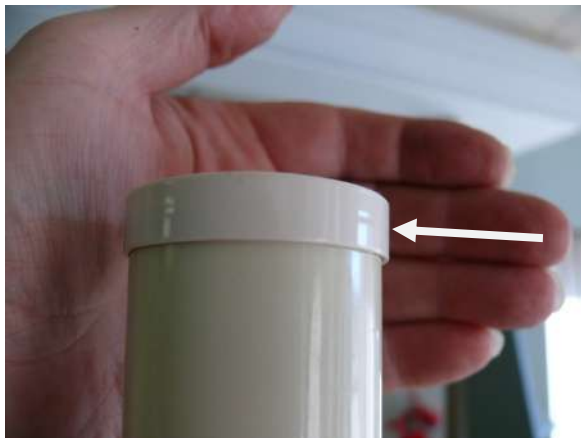


Figure 69: Install the plastic ring on top of the straight pipe.



Figure 70: Pass the cable down the straight pipe and insert the 'S' pipe into the straight pipe.

Open Box #5. This contains the lamp head.



Figure 71: Box #5 contents. Take parts out.



Figure 72: Install the big plastic cover at the top of the arm. Use tape to hold it up. Use rope to hold the arm down. Remove the screw at the end of the arm.



Figure 73: Connect the 2 wires from the lamp head to the 2 wires from the arm. It does not matter which wire is connected to which wire.



Figure 74: Insert the arm end into the lamp head and attach with the screw removed earlier. Drop the plastic cover down.



Figure 75: Install the handles pointing down.

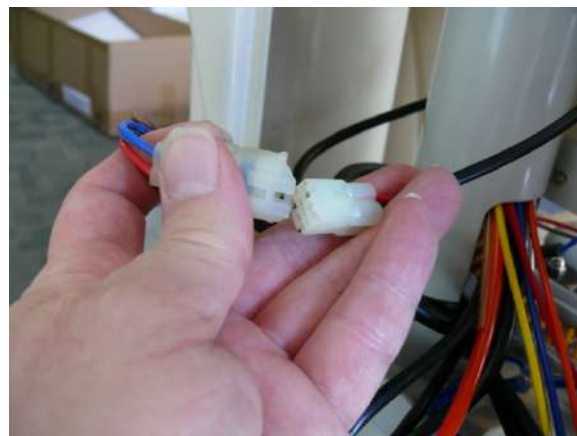


Figure 76: Connect the light head cable in the box.



Figure 77: Attach the side cover.



Figure 78: Attach the other side cover.



Figure 79: Attach the backrest to the chair. See the 3 bolts in the backrest assembly. Use the foot control to move the backrest to a position where the bolts can be accessed.



Figure 80: Remove the bolts.



Figure 81: Slide the backrest into the back slot. Line up the holes, insert the bolts and tighten.



Figure 82: Insert the headrest into the top of the backrest. Install the seat. There are 4 bolts that hold it to the chair frame.



Figure 83: Install the foot protector at the end of the seat.



Figure 84: Install the utility box. This should be placed on the floor where the air, water and suction lines are located.

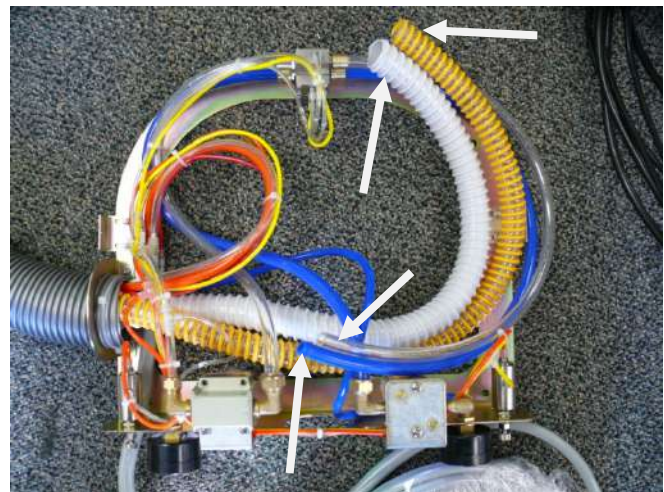


Figure 85: The blue line should be connected to the water shut off valve. The clear tube should be connected to the air shut off valve. The shut off valves are installed by the contractor. Use the fittings in Box #3 to complete the connections. The yellow spiral tube is for the suction. The connection must be tight to ensure good suction. The grey tube is for the drain, usually just inserted into the drain pipe.

Adjust the air regulator for around 80 psi.

Adjust the water regulator for around 35 psi.

Test the unit for all functions when completed.