

# CURIE<sup>Plus</sup>

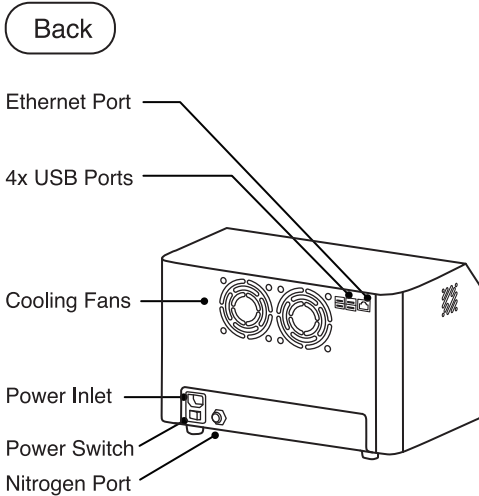
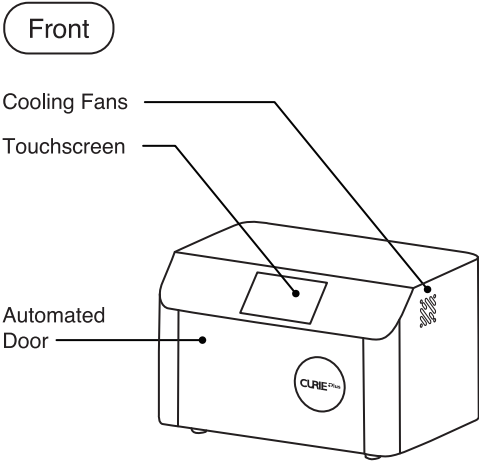
## Quick Start Guide



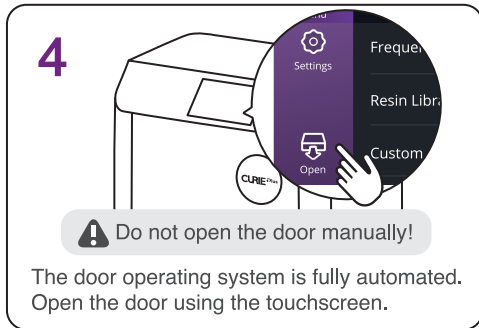
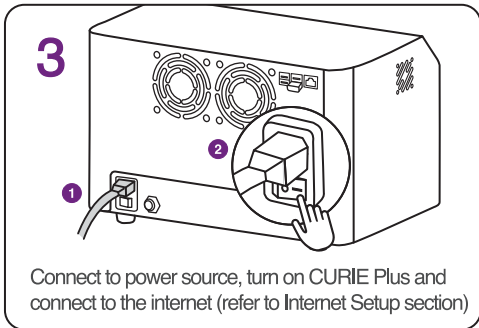
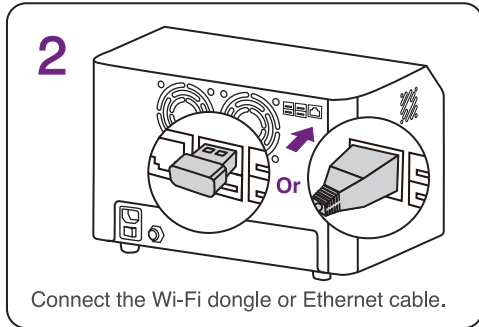
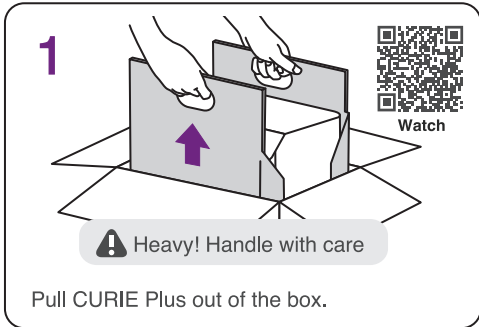
Register Your  
Product & Warranty

2023/07

# Product Overview



## Setup Guide



Operate CURIE Plus in a dry, well-ventilated indoor environment at a maximum altitude of 2000 m (6561.7 ft), with a temperature range of 18°- 25° C (64°- 77° F), a maximum relative humidity of 80%, and a pollution degree of 2. The main supply voltage fluctuations must be ≤ 10%, with an overvoltage category II.

## Package Contents



CURIE Plus



Glass Panel Box



Power Cable



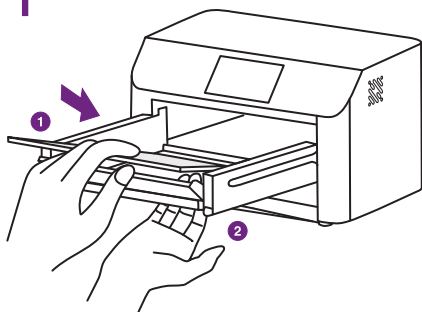
Ethernet Cable



Wi-Fi Dongle

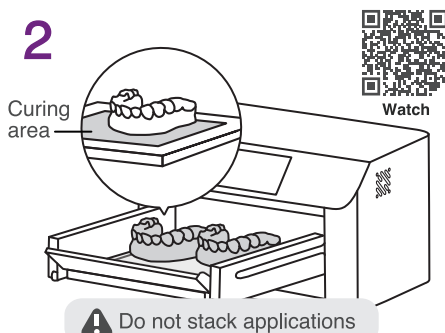
## Curing Process

1



Place the glass inside the curing chamber. Use your hand to position the glass from the bottom.

2



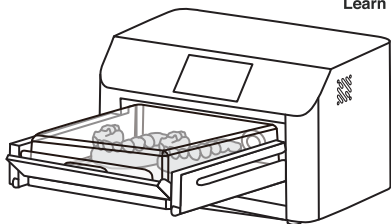
Place the applications inside CURIE Plus and position them flat inside the glass curing area.

3

Optional:  
For nitrogen process only



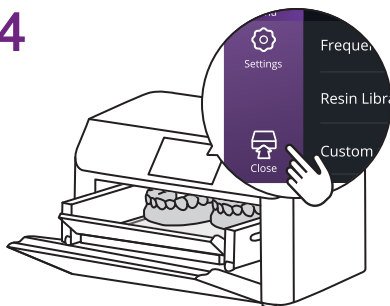
Learn More



Place the N2 Cover on top with the handle facing towards you.

\*N2 Cover Kit is sold separately.

4



Close the door using the touchscreen.

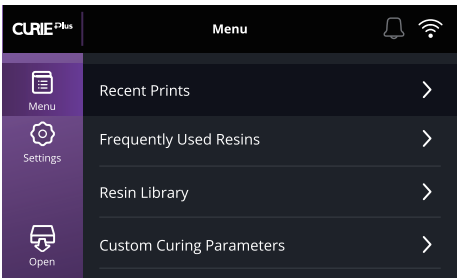


The maximum operation time for CURIE Plus is 20 minutes, with a minimum rest time of 15 minutes between curing cycles. CURIE Plus is equipped with Thermal Protection Mode, which may be activated if curing continuously at a maximum load for up to 20 minutes.

## Curing Parameters

There are 4 ways to set the curing parameters:

- **Recent Prints**  
Latest prints from your SOL(s)
- **Frequently Used Resins**  
10 most commonly used resins
- **Resin Library**  
Most up-to-date library
- **Custom Curing Parameters**  
User parameters setup



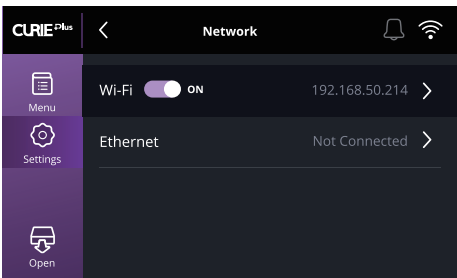
## Internet Setup

There are two ways to establish an internet connection:

- **Wi-Fi**
- **Ethernet**

If you have a SOL:

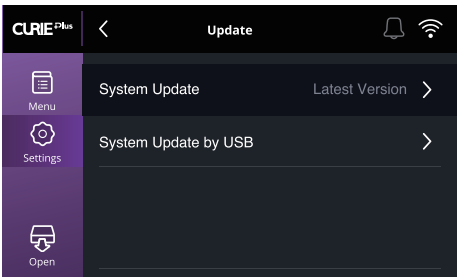
Before the SOL has finished printing, connect CURIE Plus to the same network. CURIE Plus will receive the curing parameters of the successful prints in “Recent Prints”.



## Firmware Update

Update to the latest firmware version:

- **System Update via Internet** (recommended)
- **System Update by USB**



## Technical Specifications

Dimensions 36.6 (L) x 26 (W) x 23.4 (H) cm  
14.4 (L) x 10.2 (W) x 9.2 (H) in

Weight 12.2 kg  
26.9 lbs

Power Input 100-240VAC, 50-60Hz

UV Wavelength 365, 385, and 405 nm

Chamber Dimensions 20 (L) x 15 (W) x 6 (H) cm  
7.9 (L) x 5.9 (W) x 2.4 (H) in

LED Lights 65



ACKURETTA



User Dashboard



Facebook User Group