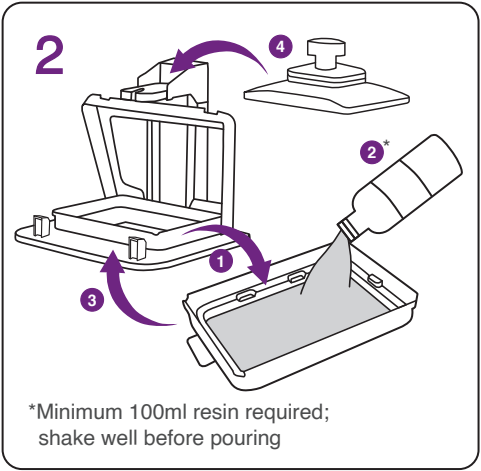
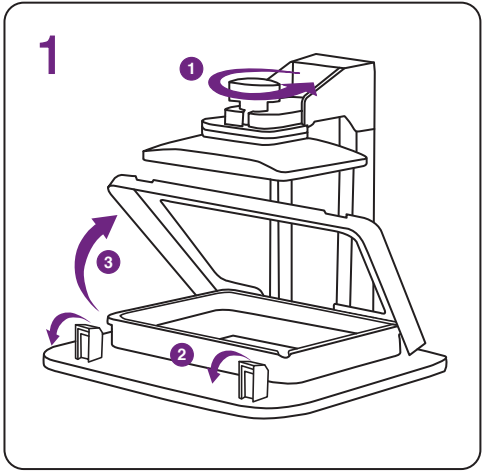
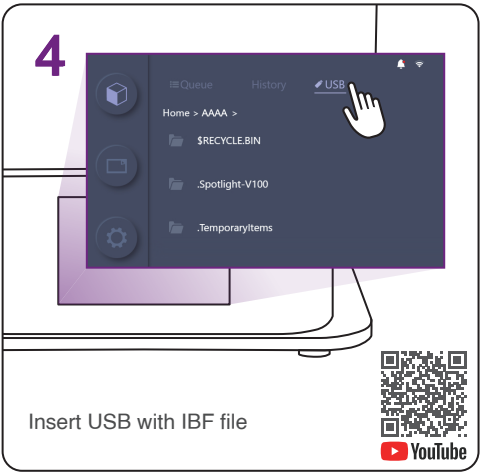
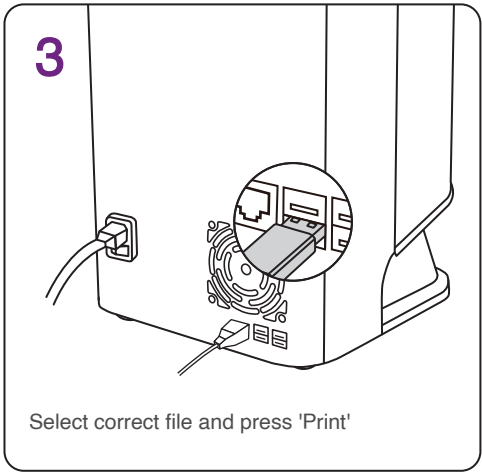


Start Printing



*Minimum 100ml resin required;
shake well before pouring



Technical Specifications

Dimensions	29.2 (L) x 27.1 (W) x 41.6 (H) cm 11.5 (L) x 10.7 (W) x 16.4 (H) in	Print Area	14 (L) x 8 (W) x 12.8 (H) cm 5.5 (L) x 3.1 (W) x 5.04 (H) in
Weight	Approx. 18 kg Approx. 40 lbs	XY Resolution	49 µm
Power Input	100-240VAC, 50-60Hz	Layer Thickness	30-150 µm
Resin Wavelength	385-405 nm	3D Print Technology	Monochrome LCD Panel

SOL
Quick Start Guide



ACKURETTA

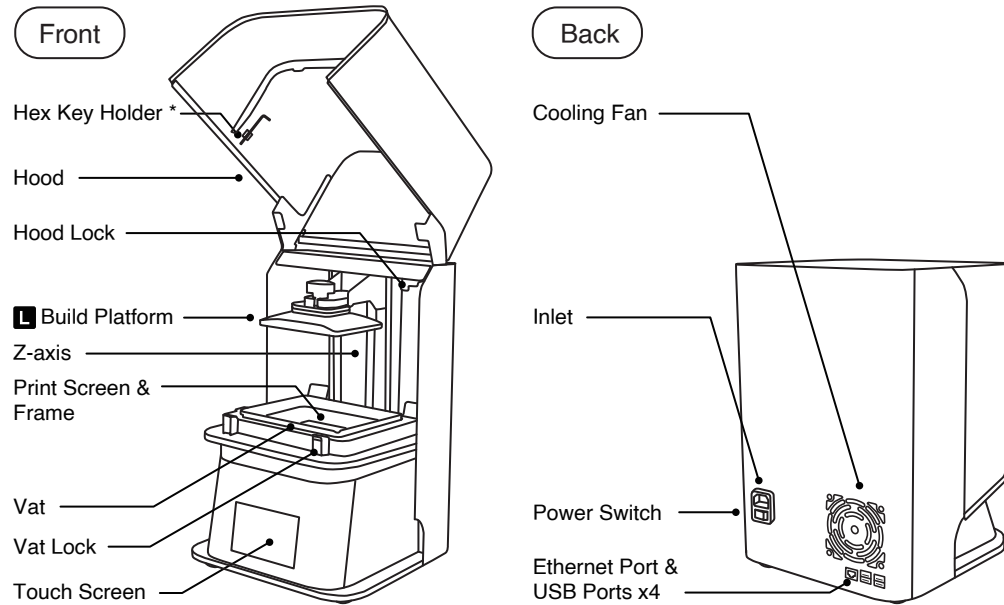


User Dashboard



Facebook User Group

Product Overview



*Store the Hex Key in the holder located under the SOL hood

ALPHA AI Setup

ALPHA AI

Prepare your computer to download and install ALPHA AI, our 3D printing slicing software.

Learn More

Only compatible with Windows 8 and later versions

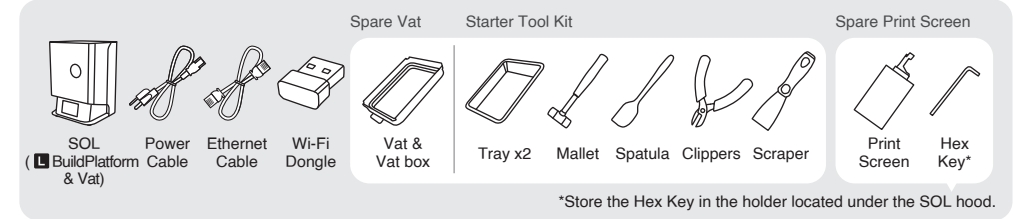
1 Import file (.STL)

2 Set up print

3 Create supports

4 Slice and save -> Export file (.IBF) to a USB

Package Contents



Setup Guide

1

Heavy! Handle with care

Pull SOL out of the box

2

Connect to power source and turn on SOL

3

Connect to Internet via Wi-Fi or Ethernet cable

4

Check IP address and ensure your printer is using the same network as your computer



Do not allow any resin or residue to come into contact with the print screen. If resin is cured on the screen it cannot be removed, and the screen must be replaced.



Use UV-filtered lights in your workspace for printing and cleaning.



Operate SOL in a clean environment that is well ventilated, with a temperature range of 18°-25°C (64°-77°F).